

Instrument #: 2019-2225
 11/25/2019 02:40:45 PM Total Pages: 1
 PLC PLAT COR CERT
 Recording Fee: \$7.00 Transfer Tax: \$0
 Denise Heeves, Recorder, Crawford County Iowa



WILKE LAND SURVEYING INC. 401 1800th Street Panama, Iowa 51562 (712)489-2898

UNITED STATES PUBLIC LAND SURVEY CORNER CERTIFICATE

SECTION 17 TOWNSHIP 82N RANGE 40W COUNTY Crawford

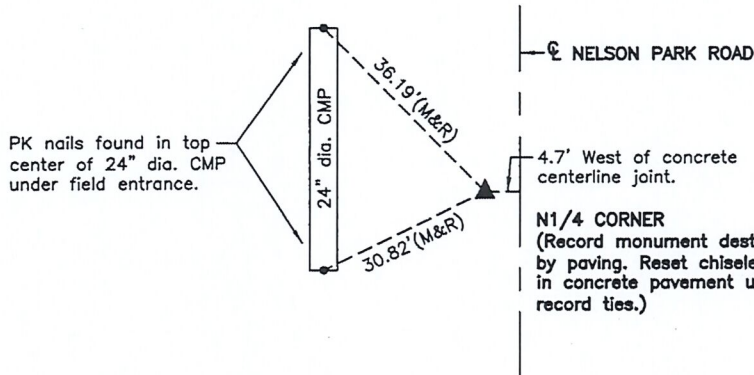
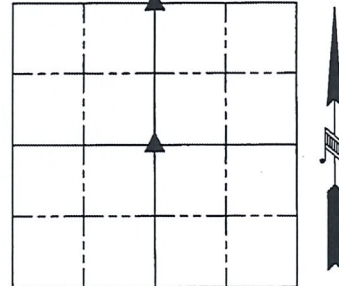
Reason for Certificate: Survey in the SE1/4 NW1/4

Monument Description and Remarks:

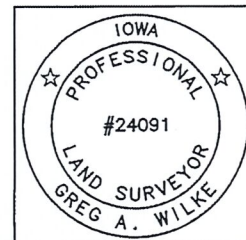
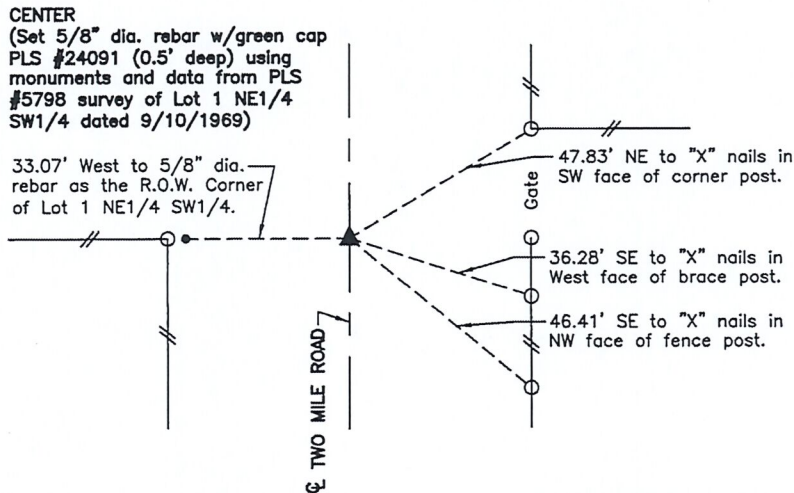
N1/4 CORNER - The record monument was destroyed by the paving of Nelson Park Road. Reset a chiseled "X" in the concrete pavement using ties from the record PLS #8893 Corner Certificate being Inst. No. 2012-0635 at the Crawford County Recorder's Office.

CENTER - Set a 5/8" diameter by 24" long rebar with a green cap PLS #24091 (0.5' deep) using the found North monuments and data from a PLS #5798 survey of Lot 1 of the NE1/4 SW1/4 dated 9/10/1969 and found in the Crawford County Auditor's Office vault. The monument fits well with the centerline of 2 Mile Road and the fence line West.

SECTION 17



ALL DISTANCES ARE HORIZONTAL



List Corners to be Indexed			
Corner	Section	Twp.	Range
N1/4 CORNER	17	82N	40W
CENTER	17	82N	40W

I hereby certify that this land surveying document was prepared and the related survey work was performed by me or under my direct personal supervision and that I am a duly licensed Land Surveyor under the laws of the State of Iowa.

Greg A. Wilke 11/25/2019
 Greg A. Wilke Date

License number 24091

My license renewal date is December 31, 2020

Pages or sheets covered by this seal: This page only