

Crawford County Recorder
 Denise Meeves
Fee Book 2012-0640
 03/20/2012 8:03:45PM
 PLC: PLAT CORNER CER
 Book: Page: # Pages: 1
 Total Fees: \$7.00

PREPARED BY - TERENCE E. CRAWFORD - SUNDQVIST ENGINEERING - 120 S. MAIN, DENISON, IOWA 51442 - PHONE (712) 283-8118

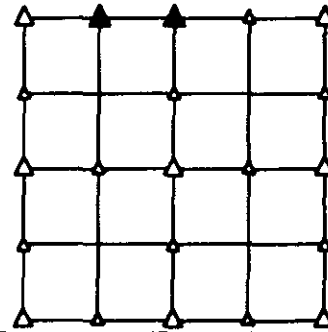
**UNITED STATES PUBLIC LAND SURVEY CORNER CERTIFICATE
 OF**

LAND SURVEY MONUMENT SITUATED IN SECTION 16, T 82 N, R 40 W OF
 THE 5TH P.M., CRAWFORD COUNTY, IOWA.
 PREVIOUSLY RECORDED IN BOOK _____, PAGE _____, OTHER _____

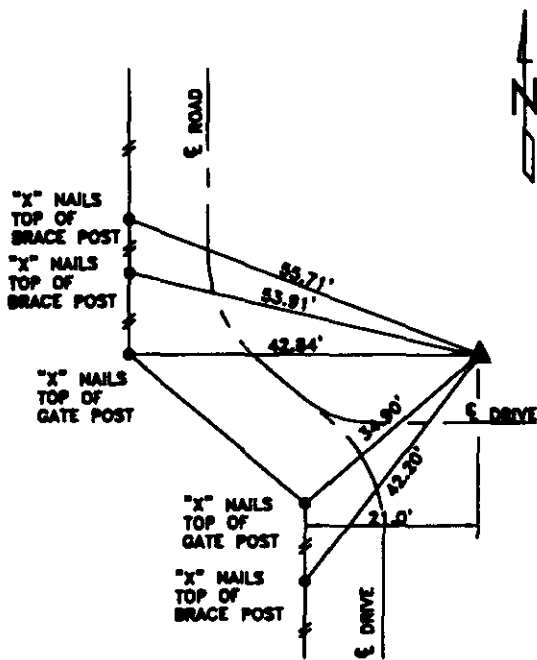
MONUMENT DESCRIPTION AND REMARKS

NW CORNER
 NE1/4 NW1/4 - FOUND IRON PIN W/ORANGE CAP #579B 0.5' DEEP.

 N1/4 CORNER - FOUND IRON PIN W/ORANGE CAP #579B 0.8' DEEP.

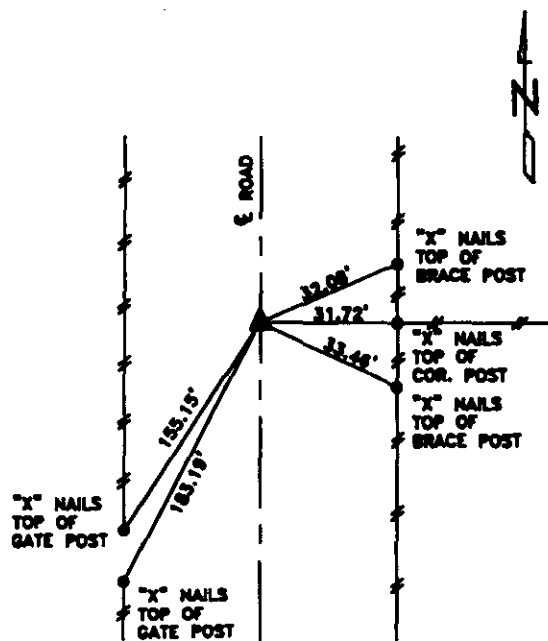


PLAN VIEW SHOWING RELATIVE LOCATION OF MONUMENT AND REFERENCE POINTS.



DISTANCES PLUMB CHAINED

NW CORNER NE1/4 NW1/4
 SECTION 16-82-40



DISTANCES PLUMB CHAINED

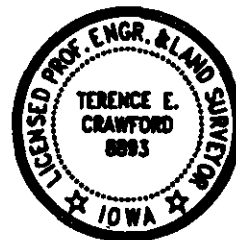
N1/4 CORNER SECTION 16-82-40

I HEREBY CERTIFY THAT THIS LAND SURVEYING DOCUMENT WAS PREPARED AND THE RELATED SURVEY WORK WAS PERFORMED BY ME OR UNDER MY DIRECT PERSONAL SUPERVISION AND THAT I AM A DULY LICENSED LAND SURVEYOR UNDER THE LAWS OF THE STATE OF IOWA.

Terence E. Crawford 2-24-12
 TERENCE E. CRAWFORD DATE

IA LICENSE NO. 8893

EXP. DATE DECEMBER 31, 2013



SE PROJECT NO. 20512
 DRAWN BY: LLL