

Instrument #: 2017-0922
 05/08/2017 10:34:12 AM Total Pages: 1
 PLC PLAT CORNER CER
 Recording Fee: \$7.00 Transfer Tax: \$0
 Denise Meeves, Recorder, Crawford County Iowa



WILKE LAND SURVEYING INC. 401 1800th Street Panama, Iowa 51562 (712)489-2898

UNITED STATES PUBLIC LAND SURVEY CORNER CERTIFICATE

SECTION 1 TOWNSHIP 82N RANGE 40W COUNTY CRAWFORD

Monument Description and Remarks:

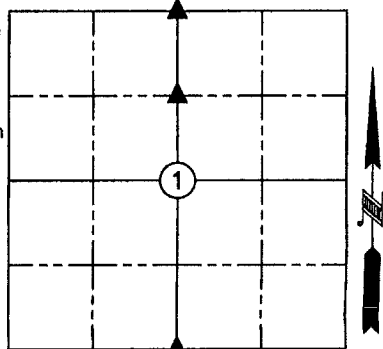
Reason for Certificate: Survey in SE1/4 FRL. NW1/4

N1/4 CORNER - Found broken off concrete monument (0.6' deep). The monument is in a crop field with no suitable ties available.

Replaces Instr. #2017-0785 as the Section number was wrong on the Section sketch.

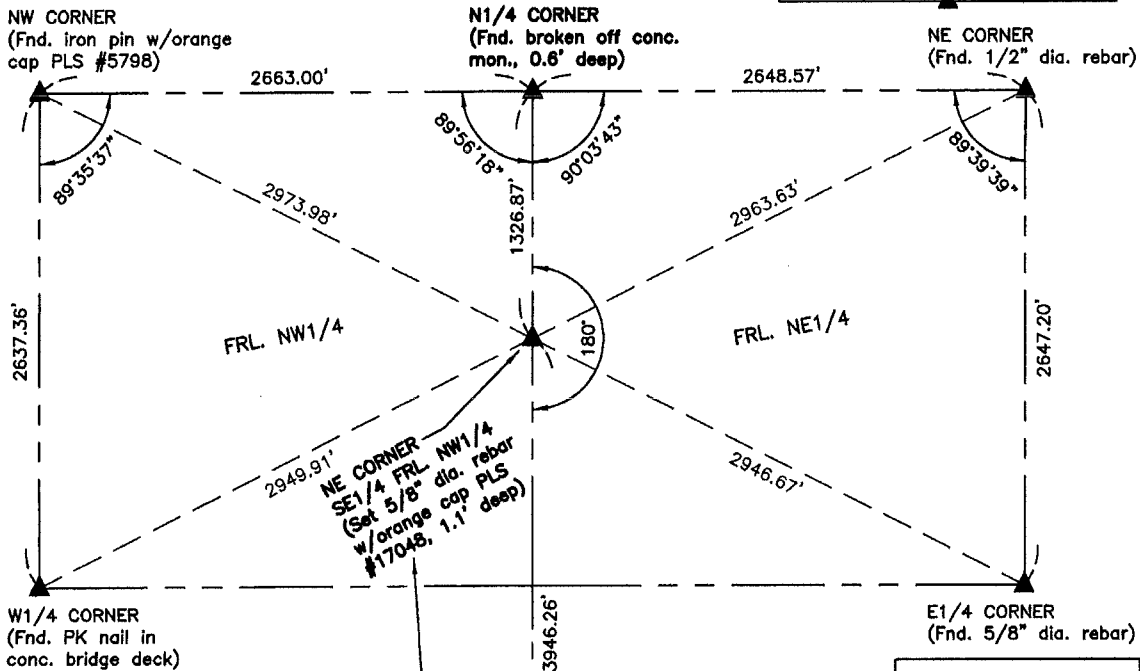
S1/4 CORNER - Found 1" diameter pinched pipe (1.0' deep) shown as set on a survey by PLS #5796 dated 11/14/1980 found in the wall file drawers in the Auditor's Office. Did not find an iron pin w/cap PLS #5798 per record corner certificate.

NE CORNER SE1/4 FRL. NW1/4 - Set a 5/8" diameter by 24" long rebar with an orange cap PLS #17048 (1.1' deep) on line and at proportioned distances between the found N1/4 Corner monument and the calculated Center of Section. The monument is in a crop field with no suitable ties available.



Iowa RTN GPS Network Coordinates

IaRCS Zone 6
 N: 7219620.99 Lat: 41°57'00.64039" N
 E: 18577029.55 Long: 95°27'00.64935" W

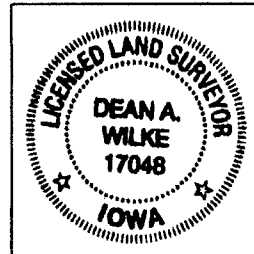


Iowa RTN GPS Network Coordinates

IaRCS Zone 6
 N: 7218294.13 Lat: 41°56'47.53288" N
 E: 18577035.34 Long: 95°27'00.63075" W

17.22' SW to "X" nails in NE face of corner post.

S1/4 CORNER (Fnd. 1" dia. pinched pipe, 1.0' deep)
 11.62' SW to "X" nails in North face of fence post.



(ALL DISTANCES ARE HORIZONTAL)

List Corners to be Indexed			
Corner	Section	Twp.	Range
N1/4 CORNER	1	82N	40W
S1/4 CORNER	1	82N	40W
NE CORNER			
SE1/4 FRL. NW1/4	1	82N	40W

I hereby certify that this land surveying document was prepared and the related survey work was performed by me or under my direct personal supervision and that I am a duly licensed Land Surveyor under the laws of the State of Iowa.

Dean A. Wilke 5/05/17
 Dean A. Wilke Date

License number 17048

My license renewal date is December 31, 2017

Pages or sheets covered by this seal: This page only