

INDEX \_\_\_\_\_  
 SCAN \_\_\_\_\_  
 FOLLOW UP \_\_\_\_\_

Instrument #: 2022-1516  
 05/09/2022 10:07:44 AM Total Pages: 1  
 PLC PLAT COR CERT  
 Recording Fee: \$7.00 Transfer Tax: \$0  
 Denise Heeves, Recorder, Crawford County Iowa



WILKE LAND SURVEYING INC. 401 1800th Street Panama, Iowa 51562 (712)489-2898

**UNITED STATES PUBLIC LAND SURVEY CORNER CERTIFICATE**

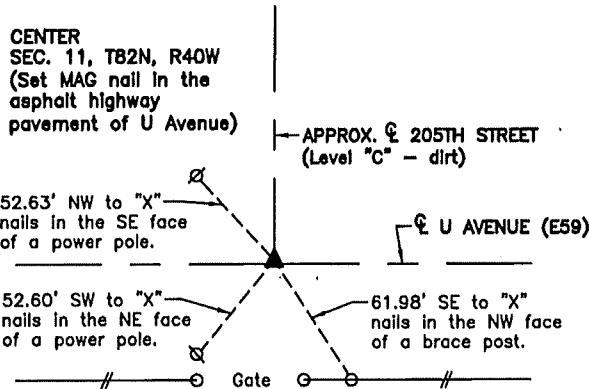
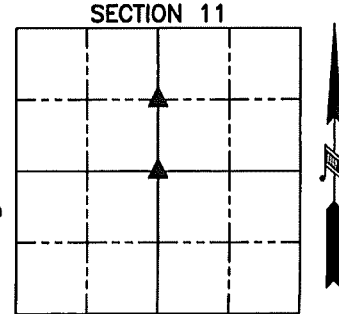
SECTION 11 TOWNSHIP 82N RANGE 40W COUNTY Crawford

Reason for Certificate: Survey in the S1/2 NE1/4

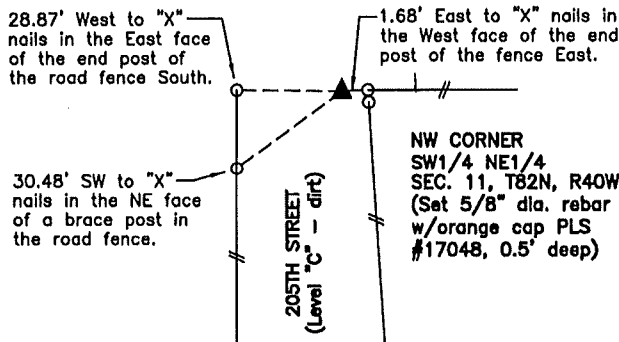
**Monument Description and Remarks:**

CENTER - I calculated the Center on line between the E1/4 Corner & W1/4 Corner and at a split of the R.O.W. fences of 205th Street (Level "C" dirt road) to the North for 2 record surveys (Inst. No. 2007-0052 & Inst. No. 2015-2166), but it was never monumented. Set a MAG nail in the asphalt pavement of U Avenue using my previous record survey as Inst. No. 2015-2166 at the Crawford County Recorder's Office. The set monument is ±0.7' North of a split of the asphalt pavement.

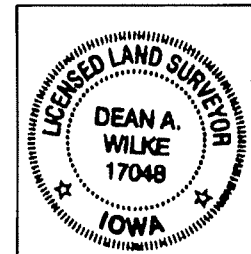
NW CORNER SW1/4 NE1/4 - Set a 5/8" diameter by 24" long rebar with an orange cap PLS #17048 (0.5' deep) on line between the monument set at the Center & the calculated N1/4 Corner, and in line with the fence East.



**\*\*ALL DISTANCES ARE HORIZONTAL\*\***



NW CORNER  
 SW1/4 NE1/4  
 SEC. 11, T82N, R40W  
 (Set 5/8" dia. rebar  
 w/orange cap PLS  
 #17048, 0.5' deep)



| List Corners to be Indexed |         |      |       |
|----------------------------|---------|------|-------|
| Corner                     | Section | Twp. | Range |
| CENTER                     | 11      | 82N  | 40W   |
| NW CORNER<br>SW1/4 NE1/4   | 11      | 82N  | 40W   |

I hereby certify that this land surveying document was prepared and the related survey work was performed by me or under my direct personal supervision and that I am a duly licensed Land Surveyor under the laws of the State of Iowa.

*Dean A. Wilke* 6/06/22  
 Dean A. Wilke Date

License number 17048

My license renewal date is December 31, 2023

Pages or sheets covered by this seal: This page only