

WILKE LAND SURVEYING INC. 401 1800th Street Panama, Iowa 51562 (712)489-2898

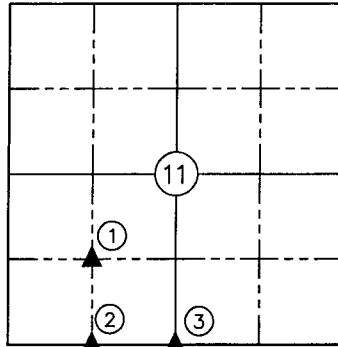
UNITED STATES PUBLIC LAND SURVEY CORNER CERTIFICATE

SECTION 11 TOWNSHIP 82N RANGE 40W COUNTY CRAWFORD

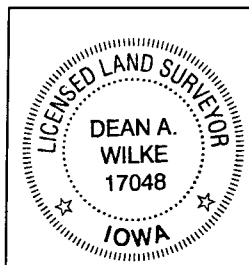
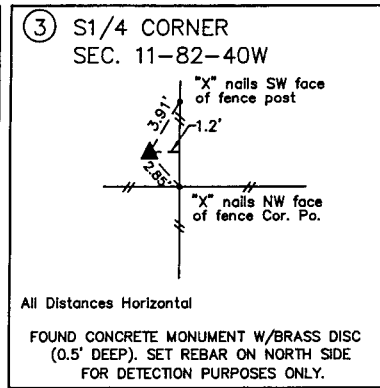
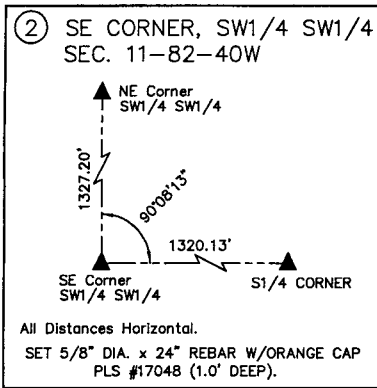
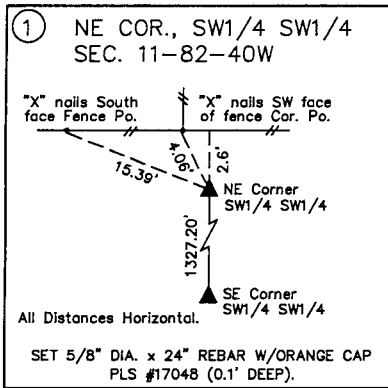
Certificate Prepared For: Survey of the South Line of the SW1/4 & the
East Line of the SW1/4 SW1/4 for a new fence.

Monument Description and Remarks:

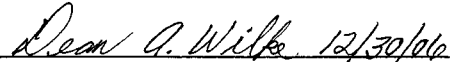
- ① - Set 5/8" x 24" rebar w/orange cap, PLS #17048 (0.1' deep) at the intersection point of lines from the midpoints of opposite sides of the SW1/4 of Section 11.
- ② - Set 5/8" x 24" rebar w/orange cap, PLS #17048 (1.0' deep) on line at the midpoint of the South Line of the SW1/4 of Section 11.
- ③ - Found concrete monument w/brass disc (0.5' deep) using reference information from the County Engineer's Office. Set 5/8" rebar on the North side just below the top of concrete monument for detection purposes only.



List Corners to be Indexed				
Corner	Section	Twp.	Range	
NE CORNER SW1/4 SW1/4	11	82N	40W	
SE CORNER SW1/4 SW1/4	11	82N	40W	
S1/4 CORNER	11	82N	40W	



I hereby certify that this land surveying document was prepared and the related survey work was performed by me or under my direct personal supervision and that I am a duly licensed Land Surveyor under the laws of the State of Iowa.



 Dean A. Wilke Date

License number 17048
 My license renewal date is December 31, 2007
 Pages or sheets covered by this seal: This page only