

INDEXED \_\_\_\_\_  
 FOLLOW UP \_\_\_\_\_  
 PROCESSED \_\_\_\_\_  
 SCHEDULED \_\_\_\_\_

Instrument #: 2015-2165  
 10/15/2015 09:03:19 AM Total Pages: 1  
 PLC PLAT CORNER CER  
 Recording Fee: \$7.00 Transfer Tax: \$0  
 Denise Neeves, Recorder, Crawford County Iowa



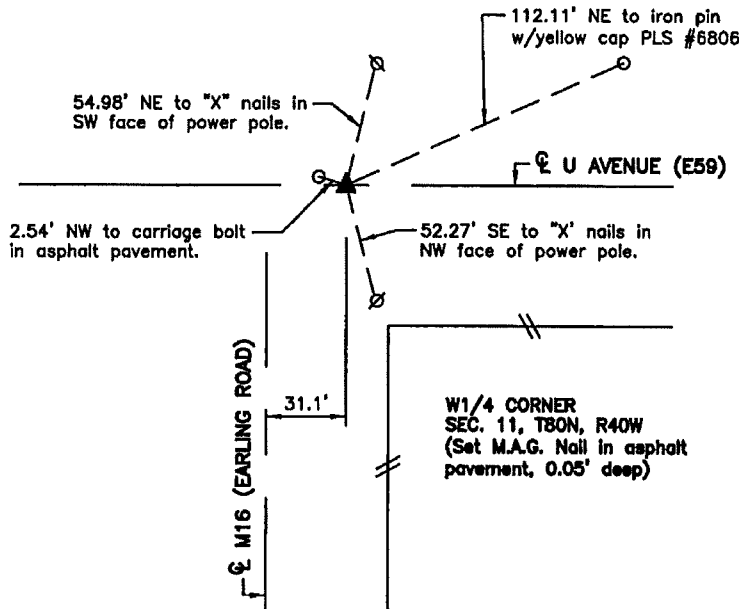
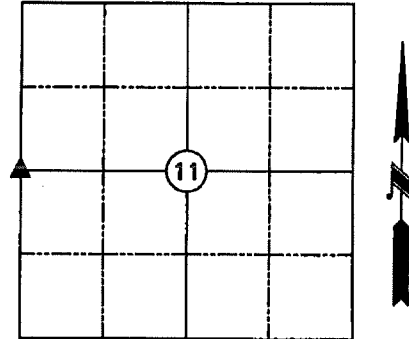
WILKE LAND SURVEYING INC. 401 1800th Street Panama, Iowa 51562 (712)489-2898

**UNITED STATES PUBLIC LAND SURVEY CORNER CERTIFICATE**

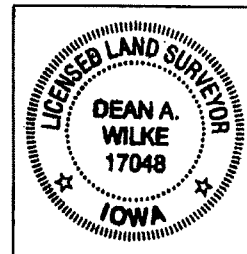
SECTION 11 TOWNSHIP 82N RANGE 40W COUNTY CRAWFORD  
 Reason for Certificate: Survey in W1/2 NW1/4

Monument Description and Remarks:

W1/4 CORNER - Found carriage bolt in asphalt pavement using the corner certificate by PLS #14808 recorded as Inst. No. 2006-0558 at the Crawford County Recorder's Office. Some of the ties appear to have been copied from PLS #6806 certificate recorded as Inst. No. 2001-2942, and do not fit the carriage bolt location. The carriage bolt was used on my previous survey of record as Inst. No. 2007-0052, but was mistakenly labeled the as being a lead plug. Now after tying in to PLS #6806 surveys of record as Inst. Nos. 2001-2939 & 2004-1107, I found that the carriage bolt appears to have been set in error after the highway asphalt overlay project in 2005. I remonumented the Corner with a MAG Nail using found monuments and data from PLS #6806 survey of record as Inst. No. 2001-2939. See my survey of Lot 3 of the W1/2 W1/2 NW1/4 for monuments and data used to calculate the monument location. The set MAG Nail is 2.54' Southeast of the found carriage bolt.



\*\*ALL DISTANCES ARE HORIZONTAL\*\*



List Corners to be Indexed			
Corner	Section	Twp.	Range
W1/4 CORNER	11	82N	40W

I hereby certify that this land surveying document was prepared and the related survey work was performed by me or under my direct personal supervision and that I am a duly licensed Land Surveyor under the laws of the State of Iowa.

*Dean A. Wilke* 10/14/15  
 Dean A. Wilke Date

License number 17048

My license renewal date is December 31, 2015

Pages or sheets covered by this seal: This page only