

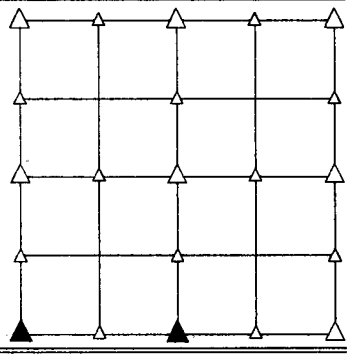
FILED IN PUBLIC RECORDS  
 COUNTY OF CRAWFORD IOWA  
 2001 DE 21 AM 9:19  
 2001-3692  
 INSTR. BY  
 DENISE MEELER, RECORDER  
 DENISE MEELER  
 #600 Mary Gitten, Deputy

PREPARED BY - TERENCE E. CRAWFORD - SUNDSQUIST ENGINEERING - 120 S. MAIN, DENISON, IOWA 51442 - PHONE (712)263-8118

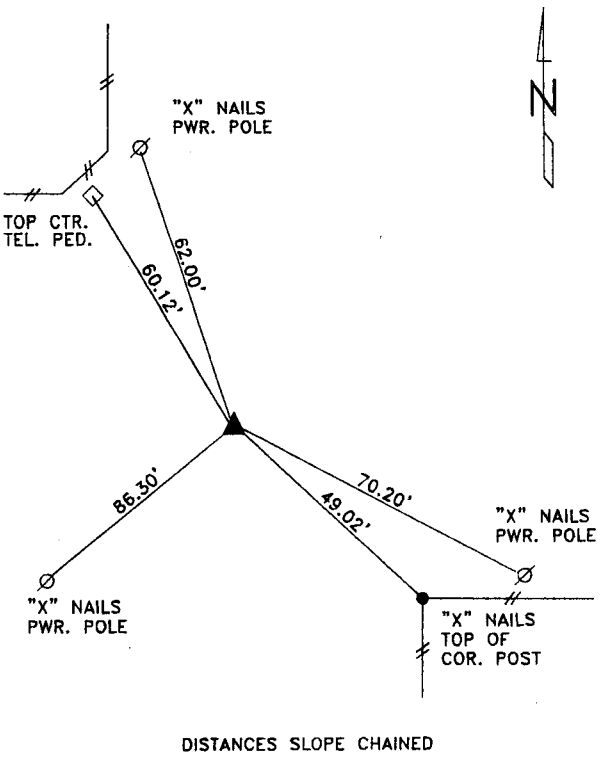
## UNITED STATES PUBLIC LAND SURVEY CORNER CERTIFICATE OF

LAND SURVEY MONUMENT SITUATED IN SECTION 5, T 85 N, R 38 W OF  
 THE 5TH P.M., CRAWFORD COUNTY, IOWA.  
 PREVIOUSLY RECORDED IN BOOK \_\_\_\_\_, PAGE \_\_\_\_\_, OTHER \_\_\_\_\_

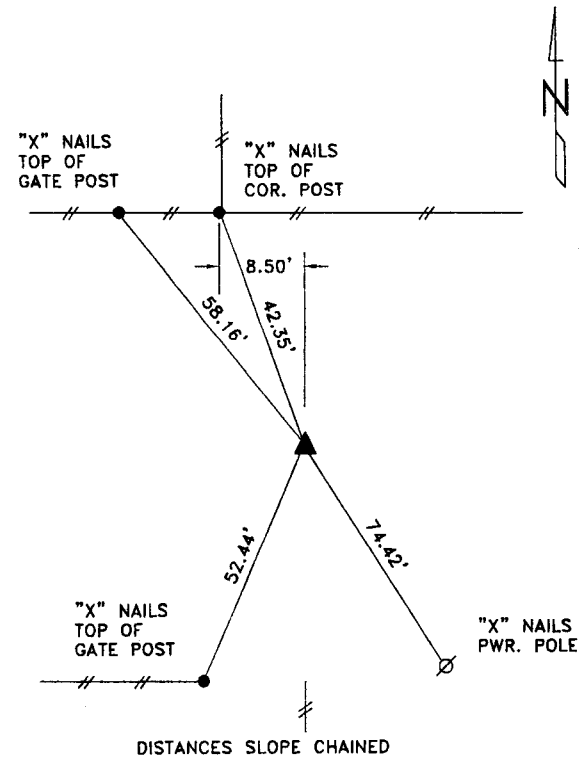
**MONUMENT DESCRIPTION AND REMARKS**  
 SW CORNER - FOUND SQUARE HEAD BOLT 1.21' DEEP.  
 S1/4 CORNER - FOUND 1" DIA. IRON PIN 8" DEEP.



### PLAN VIEW SHOWING RELATIVE LOCATION OF MONUMENT AND REFERENCE POINTS.



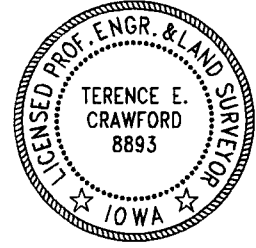
SW CORNER SECTION 5-85-38



S1/4 CORNER SECTION 5-85-38

I HEREBY CERTIFY THAT THIS LAND SURVEYING DOCUMENT WAS PREPARED  
 AND THE RELATED SURVEY WORK WAS PERFORMED BY ME OR UNDER  
 MY DIRECT SUPERVISION AND THAT I AM A DULY LICENSED LAND  
 SURVEYOR UNDER THE LAWS OF THE STATE OF IOWA.

*Terence E. Crawford*  
 TERENCE E. CRAWFORD  
 IA LICENSE NO. 8893  
 DATE  
 DEC 14 2001  
 EXP. DATE DECEMBER 31, 2001



SE PROJECT NO. 26401  
 DRAWN BY: LLL