

Instrument #: 2013-2825  
11/28/2013 02:20:09 PM Total Pages: 1  
PLC PLAT CORNER CER  
Recording Fee: \$7.00 Transfer Tax: \$0  
Denise Reeves, Recorder, Crawford County Iowa



PREPARED BY - JOSEPH P. RUESCHENBERG - SUNDQUIST ENGINEERING - 120 S. MAIN, DENSON, IOWA 51442 - PHONE (712) 263-8118

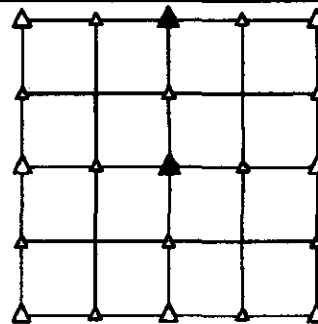
### UNITED STATES PUBLIC LAND SURVEY CORNER CERTIFICATE OF

LAND SURVEY MONUMENT SITUATED IN SECTION 7, T. 85 N, R. 38 W OF  
THE 5TH P.M., CRAWFORD COUNTY, IOWA.  
PREVIOUSLY RECORDED IN BOOK \_\_\_\_\_, PAGE \_\_\_\_\_, OTHER \_\_\_\_\_

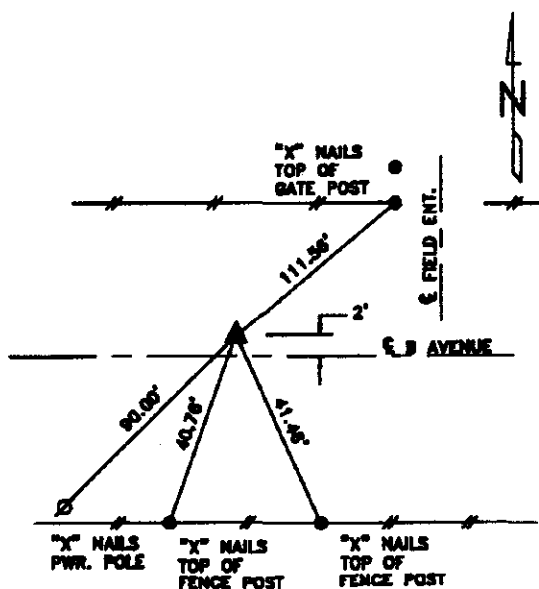
#### MONUMENT DESCRIPTION AND REMARKS

N1/4 CORNER - SET 5/8" DIA. X 18" IRON PIN W/ORANGE CAP  
#14709 0.5' DEEP. SET ON LINE BETWEEN NW COR.  
& NE COR. OF SEC. 7 & SET FROM OLD COUNTY  
TIES.

CENTER - SET PK NAIL IN CONCRETE FOOTING AROUND BASE  
OF COR. POST. NAIL IS 0.1' NO. OF BASE OF COR.  
POST.

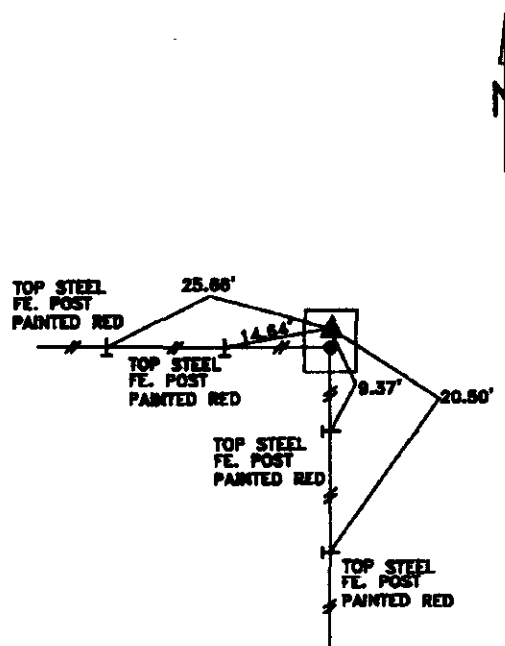


#### PLAN VIEW SHOWING RELATIVE LOCATION OF MONUMENT AND REFERENCE POINTS.



DISTANCES PLUMB CHAINED

N1/4 CORNER SECTION 7-85-38

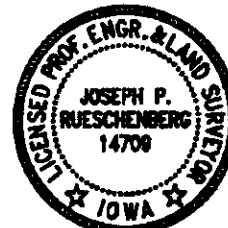


DISTANCES PLUMB CHAINED

CENTER OF SECTION 7-85-38

I HEREBY CERTIFY THAT THIS LAND SURVEYING DOCUMENT WAS PREPARED  
AND THE RELATED SURVEY WORK WAS PERFORMED BY ME OR UNDER MY  
DIRECT PERSONAL SUPERVISION AND THAT I AM A DULY LICENSED LAND  
SURVEYOR UNDER THE LAWS OF THE STATE OF IOWA.

Joseph P. Rueschenberg 11-8-2013  
JOSEPH P. RUESCHENBERG DATE  
IA LICENSE NO. 14708 EXP. DATE DECEMBER 31, 2014



SE PROJECT NO. 23413  
DRAWN BY: LLI