

INDEXED
 FOLLOW UP
 RECORD

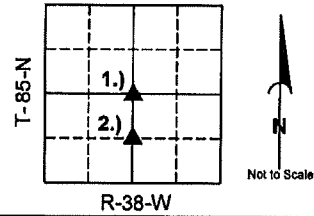
Instrument #: 2015-0697
 04/08/2015 11:08:01 AM Total Pages: 1
 PLC PLAT CORNER CER
 Recording Fee: \$7.00 Transfer Tax: \$0
 Denise Neeves, Recorder, Crawford County Iowa



PREPARED BY J. SCOTT SHEVEL PLS, I&S GROUP, P.O. BOX 458 1725 N. LAKE AVE. STORM LAKE, IOWA 50588 TELEPHONE (712)732-8292

**UNITED STATES PUBLIC LAND SURVEY CORNER CERTIFICATE
 OF**

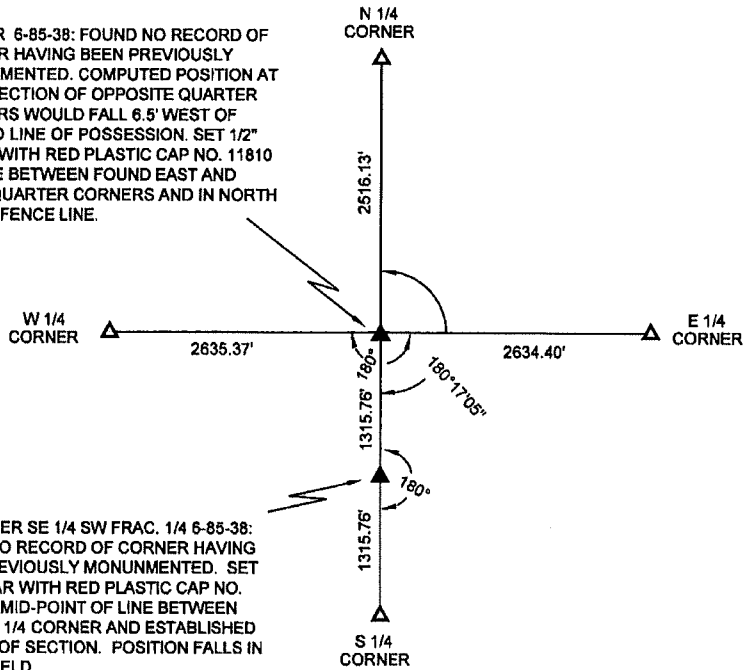
LAND SURVEY MONUMENTS SITUATED IN SECTION 6
 TOWNSHIP 85 NORTH, RANGE 38 WEST
 OF THE 5TH P.M., CRAWFORD COUNTY, IOWA.



LEGEND OF SYMBOLS AND ABBREVIATIONS

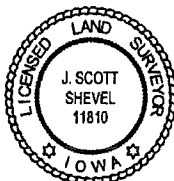
- ▲ = SECTION CORNER FOUND
- ▲ = SECTION CORNER SET
- x — = FENCE LINE
- SURVEY MARKER - 1-1/2" YELLOW/ORANGE PLASTIC DISK AS SHOWN
- SURVEY CONTROL PT. DO NOT DISTURB
- REFERENCE BAR SET - 1/2" REBAR W/BLUE PLASTIC CAP AS SHOWN

1.) CENTER 6-85-38: FOUND NO RECORD OF CORNER HAVING BEEN PREVIOUSLY MONUMENTED. COMPUTED POSITION AT INTERSECTION OF OPPOSITE QUARTER CORNERS WOULD FALL 6.5' WEST OF FENCED LINE OF POSSESSION. SET 1/2" REBAR WITH RED PLASTIC CAP NO. 11810 ON LINE BETWEEN FOUND EAST AND WEST QUARTER CORNERS AND IN NORTH SOUTH FENCE LINE.



2.) NE CORNER SE 1/4 SW FRAC. 1/4 6-85-38: FOUND NO RECORD OF CORNER HAVING BEEN PREVIOUSLY MONUMENTED. SET 1/2" REBAR WITH RED PLASTIC CAP NO. 11810 AT MID-POINT OF LINE BETWEEN FOUND S 1/4 CORNER AND ESTABLISHED CENTER OF SECTION. POSITION FALLS IN TILLED FIELD.

THIS CERTIFICATE WAS PREPARED BECAUSE NO CERTIFICATE FOR THE CORNER(S) REFERENCED HEREON IS OF RECORD IN THE OFFICE OF THE CRAWFORD COUNTY RECORDER



I hereby certify that this land surveying document was prepared and the related survey work was performed by me or under my direct personal supervision and that I am a duly licensed Land Surveyor under the laws of the State of Iowa.

J. Scott Shevel 4/3/15
 J. Scott Shevel Date:
 License Number 11810
 My license renewal date is December 31, 2015
 Pages covered by this seal 1

List Corners to be Indexed

Corners	Section	Twp.	Rng.
1.) CENTER	6	85	38
2.) NE CORNER SE 1/4 SW 1/4	6	85	38

PN: 15-17661
 DRAWN: JSS