

INDEXED g  
 FOLLOW UP g  
 RECORDED g  
 SEARCHED g

Crawford County Recorder Denise Meeves  
 Fee Book 2007-0079 REC013101  
 01/09/2007 @11:11AM # Pages 1  
 PLC PLAT CORNER CER  
 Total Fees: \$7.00

PREPARED BY & RETURN TO MICHAEL G. GEIER, SNYDER & ASSOCIATES, INC. 2727 SW SNYDER ROAD, ANKENY, IOWA 50023 (888) 964-2020

**UNITED STATES PUBLIC LAND SURVEY CORNER CERTIFICATE OF**

Land Survey Monuments situated in Section 36, Township 85, Range 37, of the Fifth Principal Meridian, CRAWFORD County, Iowa. Previously recorded in 2006-2436 in County Recorder's Office.  
 (book, page, document number, ect.)

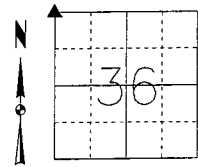
(Show reason for preparing this certificate, the evidence and detailed procedures used in establishing the corner positions and monumentation found or placed.)

**Monument Description and Remarks:**

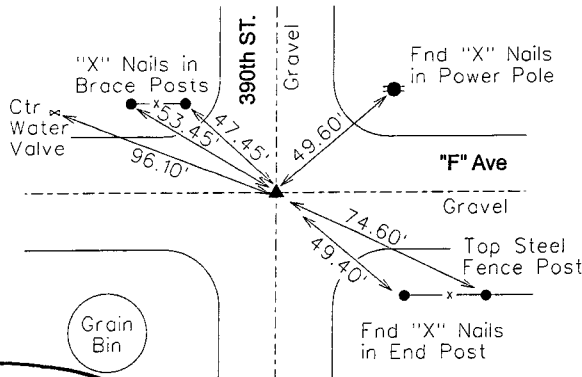
NORTHWEST CORNER - FOUND 1"x1" SQUARE IRON BOLT IN @ "F" AVENUE AND @ 390th STREET 6" DEEP FOUND USING COUNTY ENGINEER SECTION CORNER TIES AND RETIED SECTION CORNER.

**Plan-View**

(Show a minimum of three reference ties to durable physical objects, relevant monuments and physical conditions that will enable recovery of the corner.)



**NORTHWEST CORNER**  
 FOUND 1"x1" IRON BOLT



**NOTE:**  
 THIS DOCUMENT IS TO REPLACE THE DOCUMENT RECORDED IN FEE BOOK 2006-2436 WHERE THE N 1/4 CORNER WAS INCORRECTLY LABELED IN T85N, R37W. IT IS ACTUALLY LOCATED IN T85N, R38W.



I hereby certify that this land surveying document was prepared and the related surveying work was performed by me or under my direct supervision and that I am a duly licensed Land Surveyor under the laws of the State of Iowa.  
Michael G. Geier, 1-8-07  
 Michael G. Geier, PLS Date  
 License Number 11804  
 My License Renewal Date is December 31, 2007  
 Pages or sheets covered by this seal:  
 SHEET 1 OF 1

**List Corners to be Indexed**

Corners	Section	Twp	Range
NW COR	36	85	37
NE COR	35	85	37
SE COR	26	85	37
SW COR	25	85	37

TECH: JDP

PN: 85-37-36 (105:1255)

DATE: 12/29/06