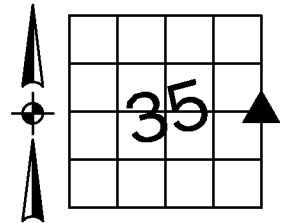


Denise Meeves **RECORDER**
 Crawford County, Iowa
 Instr. Number: 2018-1880
 Recorded: 9/14/2018 at 1:16:57.0 PM
 Pages 1
 Fee Amount: \$7.00
 Revenue Tax:

PREPARED BY AND RETURN TO: MIKE SCHULTE, SCHULTE SURVEYING, INC., 2003 390TH STREET, WESTSIDE, IA 51467 (712) 790-3489

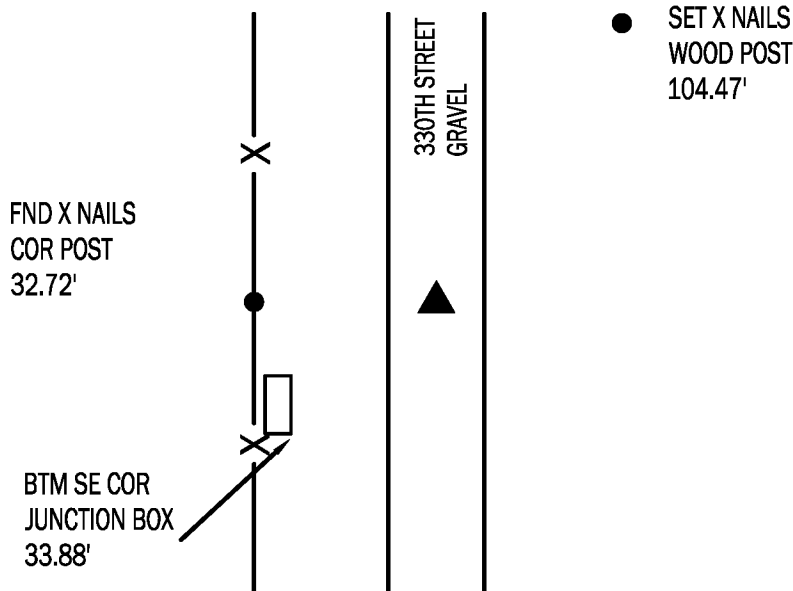
UNITED STATES PUBLIC LAND SURVEY CORNER CERTIFICATE OF

LAND SURVEY MONUMENTS SITUATED IN SECTION 35, TOWNSHIP 85 NORTH, RANGE 38 WEST, OF THE FIFTH PRINCIPAL MERIDIAN, CRAWFORD COUNTY, IOWA. PREVIOUSLY RECORDED IN 2006-1983 IN COUNTY RECORDER'S OFFICE.
(book, page instrument number)



E1/4 CORNER

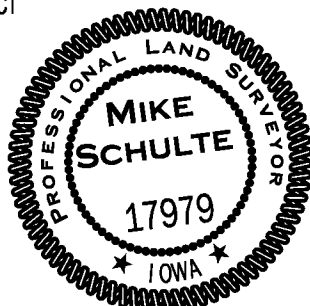
FND 1/2" REBAR 4" DEEP
 N: 7285950.65 E: 16637418.12
 EL: 1442.0'



USED RECORDED TIES TO FIND 1/2" REBAR 4" DEEP. VERIFIED POSITION OF MONUMENT WITH EXISTING TIES. THE GATE POST ON THE EAST SIDE IS NOW GONE, SO AN ADDITIONAL TIE WAS SET TO A WOOD POST.

I HEREBY CERTIFY THAT THIS LAND SURVEYING DOCUMENT WAS PREPARED BY ME OR UNDER MY DIRECT PERSONAL SUPERVISION AND THAT I AM A DULY LICENSED PROFESSIONAL LAND SURVEYOR UNDER THE LAWS OF THE STATE OF IOWA.

Mike Schulte
 MIKE SCHULTE
 2018/09/13
 DATE
 LICENSE NUMBER: 17979
 LICENSE RENEWAL DATE IS DECEMBER 31, 2019
 PAGES COVERED BY THIS SEAL: 1 OF 1



*All distances are measured horizontally unless noted.

LIST CORNERS TO BE INDEXED

CORNER	SECTION	TWP	RANGE
E1/4 COR	35	85	38
W1/4 COR	36	85	38

BASIS OF BEARING

1aRCS ZONE 6 - US SURVEY FEET
 1aRTN DERIVED - NAD83(2011)(EPOCH 2010.00)