

INDEXED
 FOLLOW UP ME
 PROOFED ME
 SCANNED 4

REC003597



Crawford County Recorder Denise Reeves
 FEE BOOK 2004-2850 10/18/2004 @ 11:13AM
 PIC PLAT CORNER CERBook: Page:04-2850 #: 1
 Total Fees: \$7.00

PREPARED BY ROBERT L. HOLZE MID-WEST LAND SURVEYORS, INC., P.O. BOX 1352, MASON CITY, IOWA 50402-1352. (641)-423-1451

UNITED STATES PUBLIC LAND SURVEY CORNER CERTIFICATE
 OF

Land Survey Monuments situated in Section 30, Township 85N, Range 38W, of the Fifth Principal Meridian, CRAWFORD County, Iowa
 Previously recorded in _____ in County Recorder's Office.

(book, page, document, number, etc.)

(Show reason for preparing this certificate, the evidence and detailed procedures used in establishing the corner positions and monumentation found or placed.)

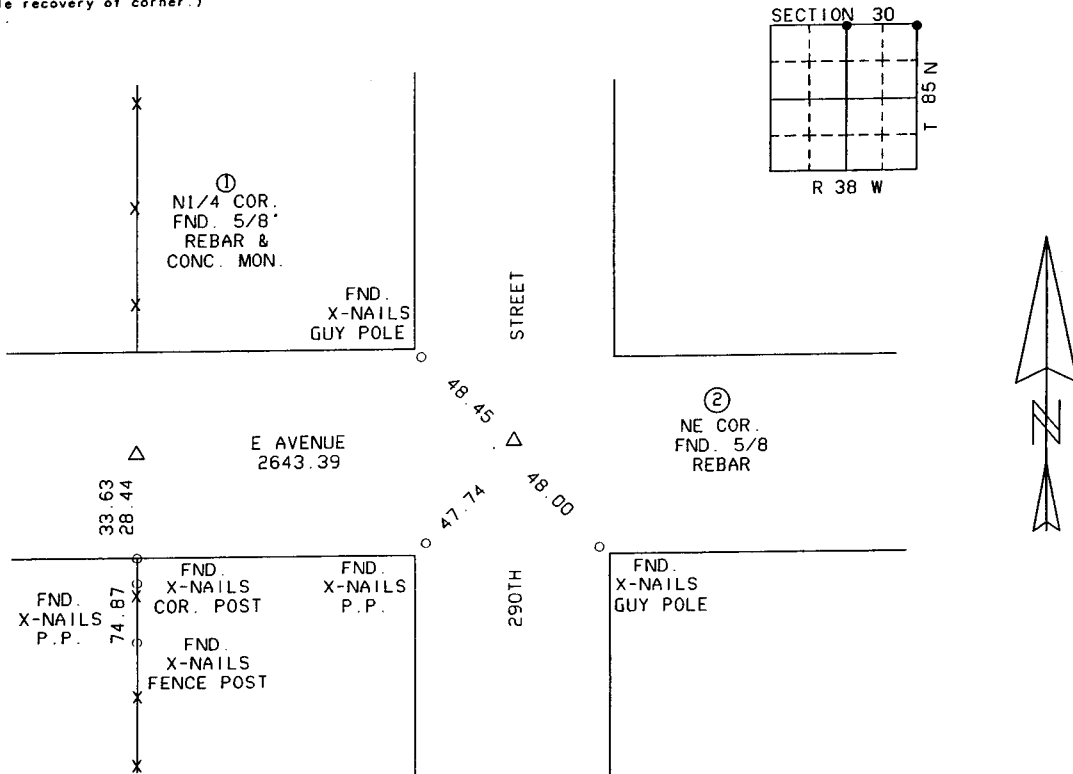
Monument Description and Remarks: _____

① N1/4 CORNER FOUND 5/8" REBAR & CONCRETE MONUMENT.

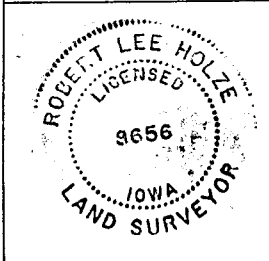
② NORTHEAST CORNER FOUND 5/8" REBAR.

PLAN-VIEW

(Show a minimum of three reference ties to durable physical objects, relevant monuments and physical conditions that will enable recovery of corner.)



I HEREBY CERTIFY THAT THE SURVEY WORK WAS COMPLETED AND THIS CERTIFICATION WAS PREPARED BY ME OR UNDER MY DIRECT PERSONAL SUPERVISION AND THAT I AM A DULY LICENSED LAND SURVEYOR UNDER THE LAWS OF THE STATE OF IOWA.



SIGNATURE: Robert L. Holze
 ROBERT L. HOLZE
 DATE: 10/13/2004
 REG. NO. 8656
 MY REGISTRATION RENEWAL DATE IS DECEMBER 31, 2005

List of Corners to be Indexed

Corners	Section	Twp.	Range
① N1/4 COR.	30	85N	38W
② NE COR.	30	85N	38W