

INDEXED
 RECORDED
 FILED
 \$0.00

Crawford County Recorder
 Denise Meeves
Fee Book 2009-1548
 06/09/2009 @08:05AM
 PLC PLAT CORNER CER
 Book: Page: # Pages: 1
 Total Fees: \$0.00

PREPARED BY: MICKAEL F. BERNDT - CRAWFORD COUNTY ENGINEER'S OFFICE - COURTHOUSE - DENISON, IA. - 712-263-2449

**UNITED STATES PUBLIC LAND SURVEY CORNER CERTIFICATE
 OF
 LAND SURVEY MONUMENT SITUATED IN STOCKHOLM TOWNSHIP, THE N1/4 CORNER
 OF SECTION 26, T-85N, R-38W OF THE FIFTH P.M. CRAWFORD COUNTY, IOWA.**

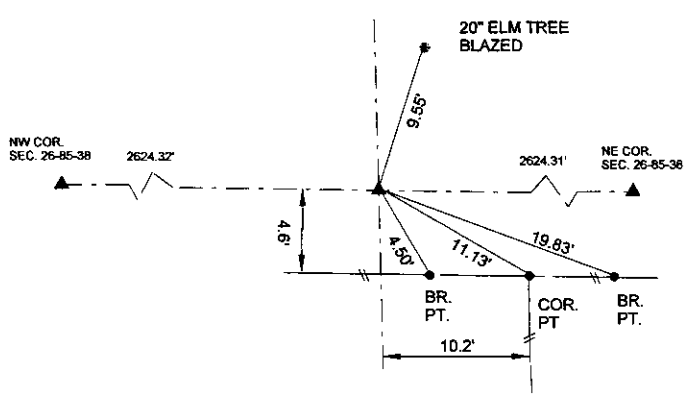
PREVIOUSLY RECORDED AS

MONUMENT DESCRIPTION AND REMARKS

N1/4 COR. OF SEC. 26-85-38

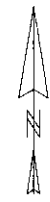
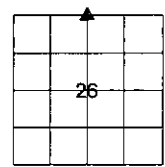
ACCORDING TO THE SECTION CORNER BOOK LOCATED IN THE ENGINEERS OFFICE ON 3/31/1941 A 4'X15'X15' HOLE WAS DUG AND NO CORNER WAS FOUND. A POST WAS SET WITH A STONE BESIDE IT 6' NORTH OF THE EXISTING CORNER POST. I SEARCHED THE AREA AND FOUND NO REMAINS OF THE POST OR THE STONE. THE EXISTING FENCES ARE NOT OF THE 1941 ERA. I ESTABLISHED THE CORNER ON LINE AND MIDWAY BETWEEN THE NW COR. AND THE NE COR. OF SEC. 26-85-38.

N1/4 COR. OF SEC. 26-85-38



ALL DISTANCES ARE SLOPED CHAINED
 ALL TIES ARE "X" NAILS UNLESS NOTED.

CORNER: N1/4 COR.
 SECTION: 26
 TOWNSHIP: 85N
 RANGE: 38W



CERTIFICATION:
 I HEREBY CERTIFY THAT THIS LAND SURVEYING DOCUMENT WAS PREPARED AND THE RELATED SURVEY WORK WAS PERFORMED BY ME OR UNDER MY DIRECT PERSONAL SUPERVISION AND THAT I AM A DULY LICENSED LAND SURVEYOR UNDER THE LAWS OF THE STATE OF IOWA.

Michael F. Berndt 6/2/09
 Signature Date of Survey

MICKAEL F. BERNDT 14808 Dec. 31, 2008
 Typed Name L.S. No. License Renewal Date

Pages covered by this seal 1

