

2419

E 1/4 CORNER OF SEC 24- 85-38

FOUND 1 FOOT 6" X 8" X 10" AT ADAPIN
6" LAMINATED AND SET C.M.

TIERS FROM X SPIKES IN COR POSTS.

22.3 E. FROM COR POST

24.4 E.W. 24' BLADES PLATE TRAIL (SLASH MEAS)

22.9 W. W. S. FENCE LINE

28.7 N.W. COR POST

COR IS 168 N OF FORCE FROM EAST
STRAIGHT OUT FROM S.W. WEST

13
24

Along MCH BK # 10 RR. 28 & MCH BK 42

PP. 104 as reference, obtained

2618.2 East of CM. at NW

COR at 24.85-35, at this point

found ancient fence running N/S,

used this for E/W control. Then

run transit line from CM at

NE & NW corners. Then chained

North from center of 24.85-35

& split a 52' road, used

a compromise point of these three

for N/S control, set C.M. 12"

below road

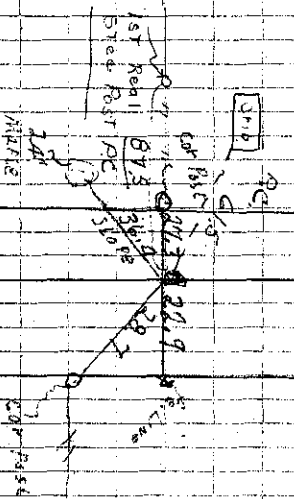
ties from X-spikes

FOUND 12-12-39

34

81-41

* PC = Plumb Chain



81-16.5

COR. W. E. 11 SOUTH

Established 7-2-42

Grid - Champion

Found Cor. 6-18-68

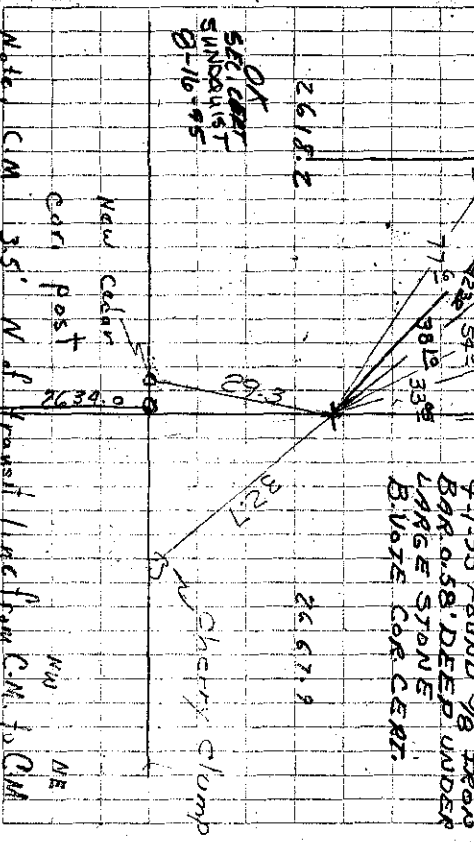
Richard's & Grew

9-1-95 FOUND 5/8" IRON

BAR 0.58" DEEP UNDER

LARGE STONE

B.W. COR. CERT.



OR SET COR. SUNDRIEST 8-16-95

New cedar cor. post

W. E. 11 SOUTH

Found CM July 12 1954

TOP OF COR BROKEN OFF

COR. IS EXPOSED 6-18-68

13