



Crawford County Recorder Danise Reeves  
FEE BOOK 2006-1718 6/14/2006 @ 10:37AM  
PLC PLAT CORNER CERBook: Page: #: 1  
Total Fees: \$7.00

INDEXED  
FOLLOW UP  
PROCESSED  
SCANNED

PREPARED BY AND RETURN TO: JEFFREY M. KRUEGER P.L.S., KUEHL AND PAYER LTD., 423 WEST MAIN ST., SAC CITY, IA 50583 PH. (712)662-7859

### UNITED STATES PUBLIC LAND SURVEY CORNER CERTIFICATE OF

LAND SURVEY MONUMENTS SITUATED IN SECTION 1, TOWNSHIP 85 NORTH,  
RANGE 38 WEST, OF THE 5TH PRINCIPAL MERIDIAN, CRAWFORD COUNTY, IOWA.

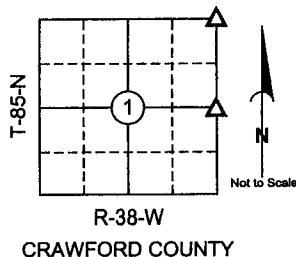
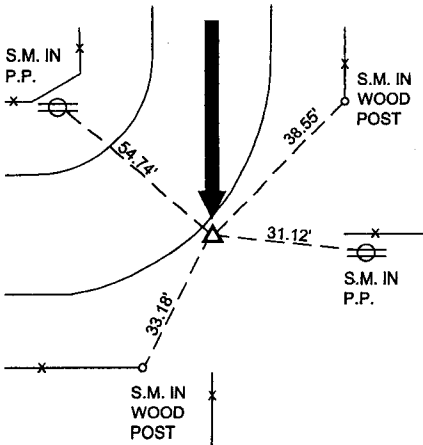
PREVIOUSLY RECORDED IN BOOK \_\_\_\_\_ PAGE \_\_\_\_\_

#### MONUMENT DESCRIPTION AND REMARKS:

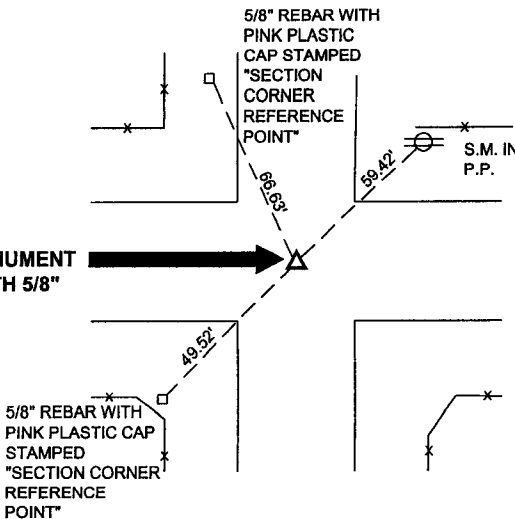
- 1.) E 1/4 CORNER 1-85-38: FOUND CONCRETE MONUMENT 30" DEEP; RAISED WITH 5/8" REBAR 6" DEEP
- 2.) NE CORNER 1-85-38: FOUND CONCRETE MONUMENT 30" DEEP; RAISED WITH 5/8" REBAR 6" DEEP

#### PLAN - VIEW

**1.) E 1/4 CORNER  
1-85-38  
FOUND CONCRETE MONUMENT 30" DEEP;  
RAISED WITH 5/8" REBAR 6" DEEP**



**2.) NE CORNER  
1-85-38  
FOUND CONCRETE MONUMENT  
30" DEEP; RAISED WITH 5/8"  
REBAR 6" DEEP**



S.M. = SURVEY MARKER  
PLASTIC REFERENCE DISK  
AS SHOWN BELOW



I hereby certify that this land surveying document was prepared and the related survey work was performed by me or under my direct personal supervision and that I am a duly licensed Land Surveyor under the laws of the State of Iowa.

*Jeffrey M. Krueger*  
 Date: 6-8-2006  
 License Number 16749  
 My license renewal date is December 31, 2006  
 Page covered by this seal 1

#### List Corners to be Indexed

Corners	Section	Township	Range
1) E 1/4	1	85	38
2) NE	1	85	38