


INDEXED WJ
 FOLLOW UP _____
 RECORDED _____
 SCANNED _____

□ 
 Crawford County Recorder Denise Meeves
 Fee Book 2007-0948 REC014092
 04/11/2007 8:13AM # Pages 1
 PLC PLAT CORNER CER
 Total Fees: \$7.00

WILKE LAND SURVEYING INC. 401 1800th Street Panama, Iowa 51562 (712)489-2898

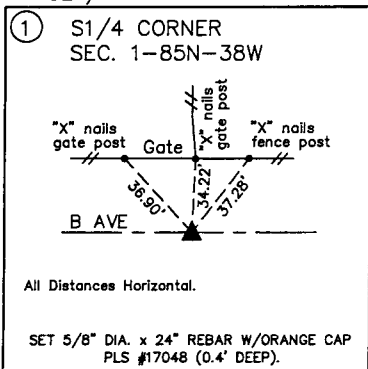
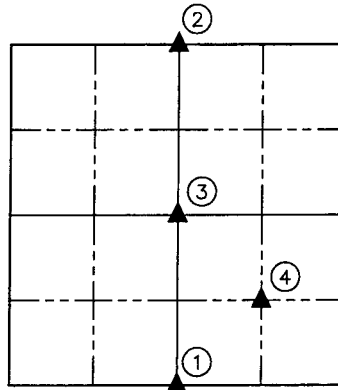
UNITED STATES PUBLIC LAND SURVEY CORNER CERTIFICATE

SECTION 1 TOWNSHIP 85N RANGE 38W COUNTY CRAWFORD

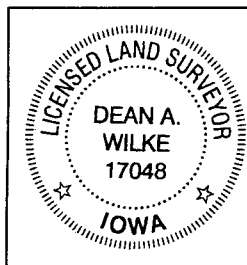
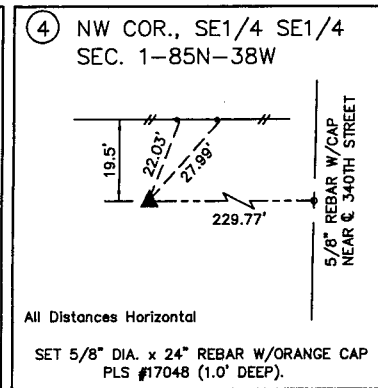
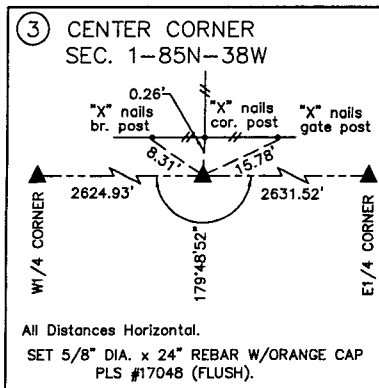
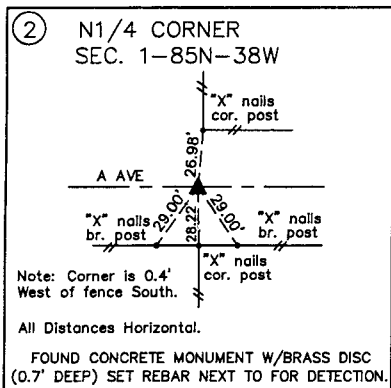
Certificate Prepared For: Survey of Lot 2 of the SE1/4 SE1/4

Monument Description and Remarks:

- ① - On previous survey dug with backhoe in line with fence North perpendicular to road. Nothing was found, set 5/8" dia. x 24" rebar w/orange PLS #17048 (0.4' deep) on line between SW Corner & SE Corner of Section and in line with fence North. Hit centerline of road close.
- ② - Found conc. mon. w/brass disc (0.7' deep). Set rebar along side for detection purposes.
- ③ - After checking how the intersection point of lines from opposite 1/4 Corners compared to the existing fence corner post at the center of Section, set a 5/8" by 24" rebar w/orange cap PLS #17048 (flush) on the South side of the corner post and used that point as the center of Section.
- ④ - Set 5/8" by 24" rebar w/orange cap PLS #17048 (1.0' deep) at the intersection point of lines from the midpoints of opposite sides of the SE1/4.



| List Corners to be Indexed | | | |
|----------------------------|---------|------|-------|
| Corner | Section | Twp. | Range |
| S1/4 CORNER | 1 | 85N | 38W |
| N1/4 CORNER | 1 | 85N | 38W |
| CENTER | 1 | 85N | 38W |
| NW CORNER SE1/4 SE1/4 | 1 | 85N | 38W |



I hereby certify that this land surveying document was prepared and the related survey work was performed by me or under my direct personal supervision and that I am a duly licensed Land Surveyor under the laws of the State of Iowa.

Dean A. Wilke 4/10/07
 Dean A. Wilke Date

License number 17048

My license renewal date is December 31, 2007

Pages or sheets covered by this seal: This page only