

12 7 E 1/4 corner of Sec 12 85-38

Found 1-1/2 bricks, 1 rock 2"x4"x6" at a depth of 16" lowered and set C.M.

ties from 5 spikes 171 Cor Pass

63.9 NE from 41 Burr oak tree

14.5 S " 1st Pass N

9.9 N " 1st Steel Post S

0.5 E " Cor Post

NC 12 12

1 2640' west of NW Cor.

Stone 31 links west of fence corner

S.R. P. 245

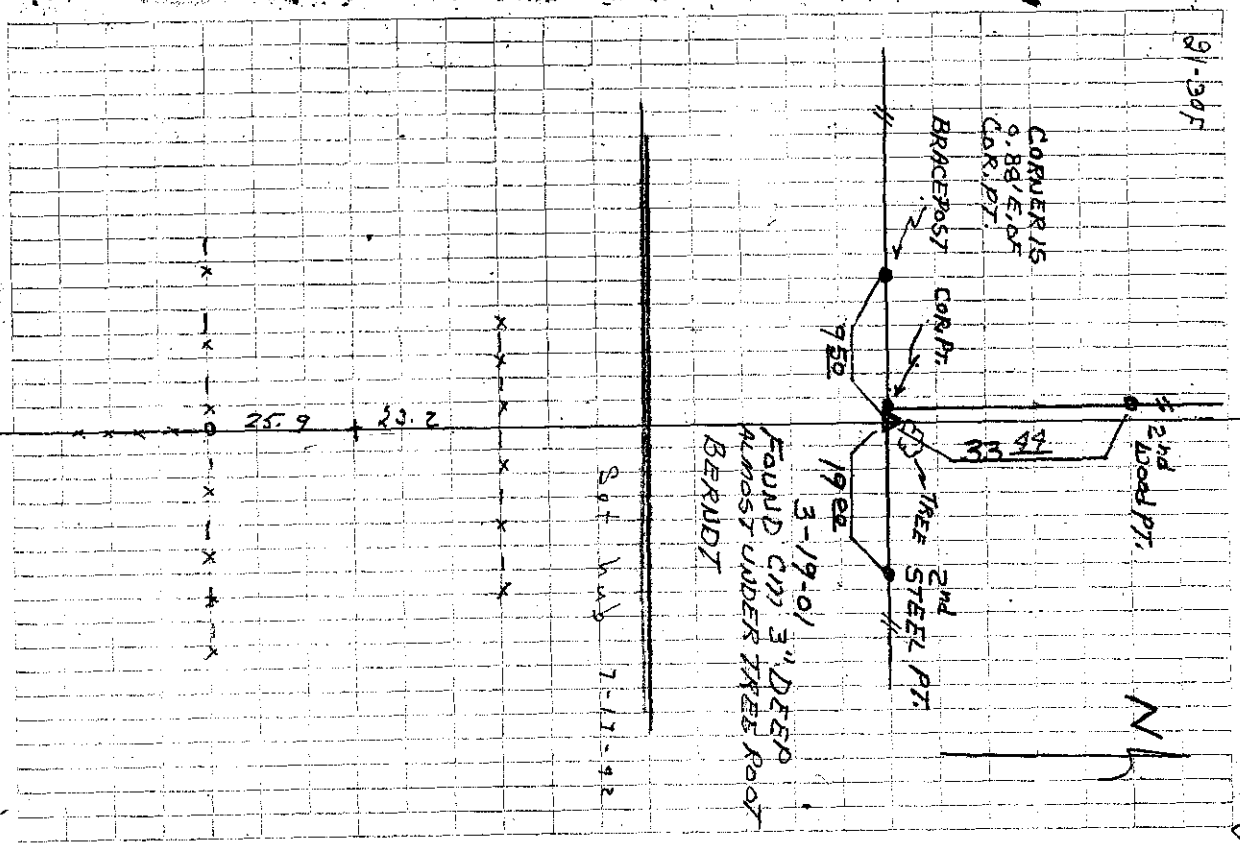
Chained E from NW cor of 12-85-38

2658 to fence south corner

South be about 20' west of

this corner

FOUND 12-26-39 25



12