

1999 AP -8 PH 3: 47

INDEXED  
FOLLOW UP  
PROOFED

INST. NO. 99-1059  
DENISE MEEVES, RECORDER  
*Denise Meeves*  
FEE \$6.00

**UNITED STATES PUBLIC LAND SURVEY CORNER CERTIFICATE  
OF**

LAND SURVEY MONUMENTS SITUATED IN SECTION 9, TOWNSHIP 85 NORTH, RANGE 41 WEST,  
OF THE 5th PRINCIPAL MERIDIAN, CRAWFORD COUNTY, IOWA.

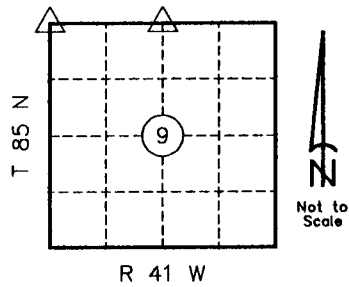
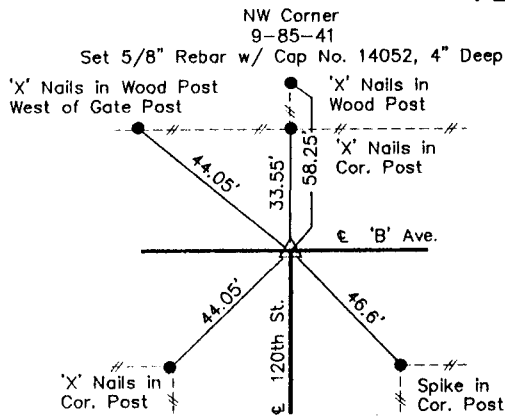
PREVIOUSLY RECORDED IN BOOK: \_\_\_\_\_, PAGE: \_\_\_\_\_

MONUMENT DESCRIPTION AND REMARKS: \_\_\_\_\_

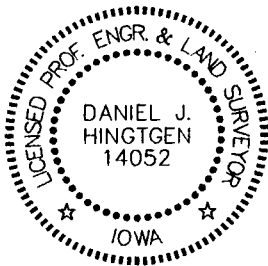
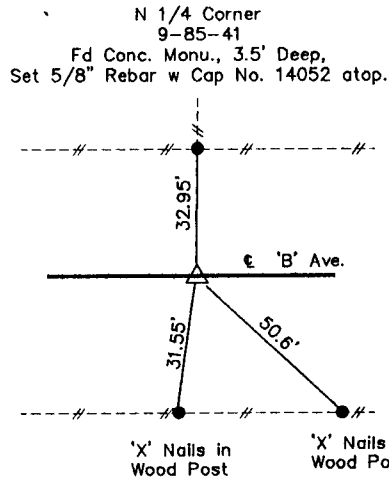
- 1). NW Corner 9-85-41; Set 5/8" Rebar w/ Cap No. 14052, 4" Deep
- 2). N 1/4 Corner 9-85-41; Fd Conc. Monu., 3.5' Deep, Set 5/8" Rebar w Cap No. 14052 atop.

Stone ties were obtained from Crawford County Engineer's Office, were field verified and retied.

**PLAN-VIEW**



NW Corner  
Fd nothing at tie location.  
Set 5/8" Rebar w/ Cap No. 14052  
with use of ties. Fit both Centerlines  
well and was in line eith fence  
line to the North.



I hereby certify that this land surveying document was prepared and the related survey work was performed by me or under my direct personal supervision and that I am a duly licensed Land Surveyor under the laws of the State of Iowa.

*[Signature]*  
Dan Hingtgen, Land Surveyor Date 4/21/99  
License number: 14052  
My registration renewal date is December 31, 2000  
Pages or sheets covered by this seal: ONE (1)

**Corners to be Indexed**

Corner	Section	Twp.	Range
NW Cor.	9	85	41
N 1/4 Cor.	9	85	41

**L and H Engineers & Surveyors**  
117 South 2nd Street  
Cherokee, Iowa 51012  
Tel. (712) 225-0560  
Fax (712) 225-6017