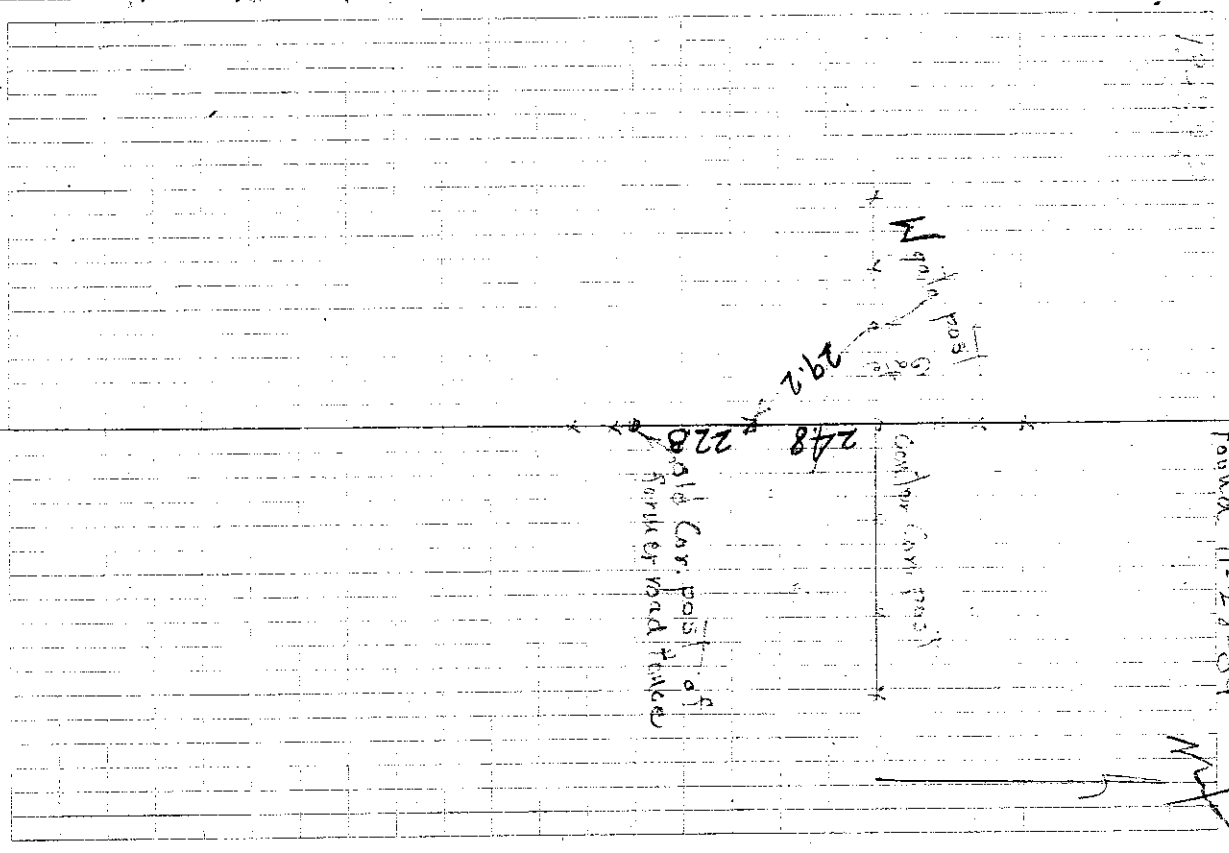


31

N 1/2 cor sec 5 - 785N - R41W
Found 2 1/2" 2" X 1 1/2" and 1" in
4" X 8" X 8" at depth 7 ft
Found 1/2" soil CH

W. from X spikes in cor post
24.8 S from center cor post
24.2 SE " W pole post
23.8 N " old car post
Corner is directly under 90 frames



Found 11-28-89