

COPY

Crawford County Recorder
Denise Meeves
Fee Book 2009-1723

06/25/2009 809:48AM
PLC PLAT CORNER CER
Book: Page: # Pages: 1
Total Fees: \$7.00

Handwritten initials

PREPARED BY - TERENCE E. CRAWFORD - SUNDQUIST ENGINEERING - 120 S. MAIN, DENISON, IOWA 51442 - PHONE (712) 263-8118

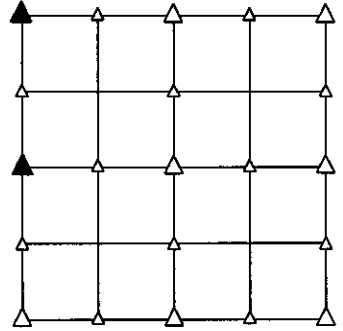
UNITED STATES PUBLIC LAND SURVEY CORNER CERTIFICATE OF

LAND SURVEY MONUMENT SITUATED IN SECTION 29, T 85 N, R 41 W OF
THE 5TH P.M., CRAWFORD COUNTY, IOWA.
PREVIOUSLY RECORDED IN BOOK _____, PAGE _____, OTHER _____

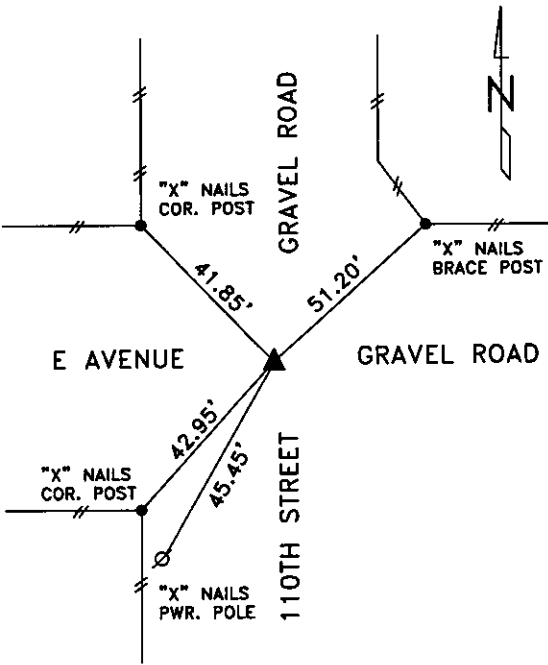
MONUMENT DESCRIPTION AND REMARKS

NW CORNER - FOUND CM 1.1' DEEP, SET 5/8" DIA. X 18" IRON PIN
ALONG NORTH SIDE OF CM FLUSH WITH CM, SET 60D
SPIKE OVER CM 0.3' DEEP.

W1/4 CORNER - FOUND CM 0.8' DEEP, SET 5/8" DIA. X 18" IRON
PIN ALONG NORTH SIDE OF CM FLUSH WITH CM.

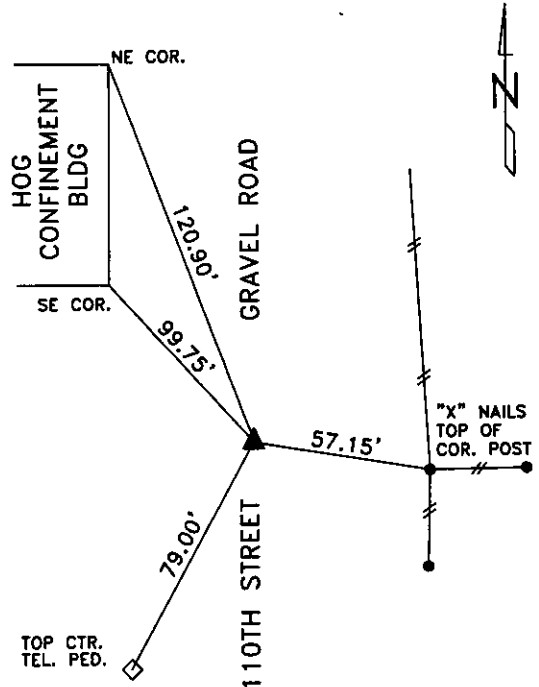


PLAN VIEW SHOWING RELATIVE LOCATION OF MONUMENT AND REFERENCE POINTS.



DISTANCES PLUMB CHAINED

NW CORNER SECTION 29-85-41



DISTANCES PLUMB CHAINED

W1/4 CORNER SECTION 29-85-41

I HEREBY CERTIFY THAT THIS LAND SURVEYING DOCUMENT WAS PREPARED
AND THE RELATED SURVEY WORK WAS PERFORMED BY ME OR UNDER MY
DIRECT PERSONAL SUPERVISION AND THAT I AM A DULY LICENSED LAND
SURVEYOR UNDER THE LAWS OF THE STATE OF IOWA.

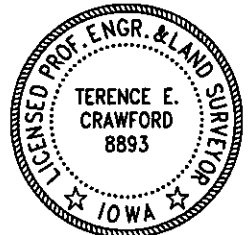
Terence E. Crawford
TERENCE E. CRAWFORD

JUN 12 2009

DATE

IA LICENSE NO. 8893

EXP. DATE DECEMBER 31, 2009



SE PROJECT NO. 21509
DRAWN BY: LLL