



Crawford County Recorder Denise Meeves
 Fee Book 2007-0810 REC013932
 03/29/2007 @1014AM # Pages 1
 PLC PLAT CORNER CER
 Total Fees: \$7.00

INDEXED yy
 FO LOW UP yy
 PR OFED yy
 SC yy

PREPARED BY AND RETURN TO: JEFFREY M. KRUEGER P.L.S., KUEHL AND PAYER LTD., 2002 WEST MAIN ST., SAC CITY, IA 50583 PH. (712)662-7859

**UNITED STATES PUBLIC LAND SURVEY CORNER CERTIFICATE
 OF**

LAND SURVEY MONUMENTS SITUATED IN SECTION 2, TOWNSHIP 85 NORTH,
 RANGE 41 WEST, OF THE 5TH PRINCIPAL MERIDIAN, CRAWFORD COUNTY, IOWA.

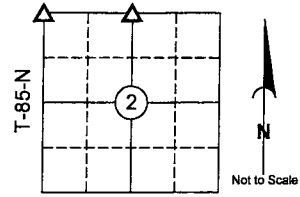
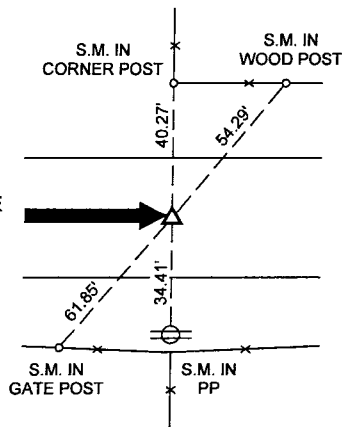
PREVIOUSLY RECORDED IN BOOK _____ PAGE _____

MONUMENT DESCRIPTION AND REMARKS:

- 1.) N 1/4 CORNER 2-85-41: FD. DAMAGED CONCRETE MONUMENT 2" DEEP; REPLACED WITH 5/8" REBAR 6" DEEP
 2.) NW CORNER 2-85-41: FD. CONCRETE MONUMENT 6.5' DEEP; RAISED WITH 5/8" REBAR 6" DEEP

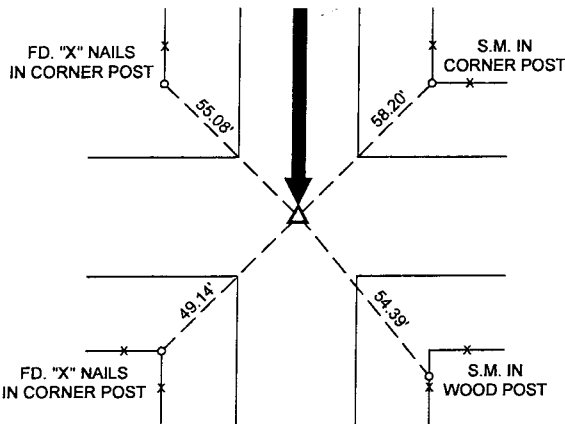
PLAN - VIEW

1.) N 1/4 CORNER
 2-85-41
 FD. DAMAGED CONCRETE
 MONUMENT 2" DEEP;
 REPLACED WITH 5/8"
 REBAR 6" DEEP

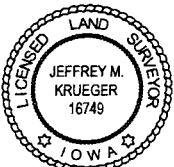


R-41-W
 CRAWFORD COUNTY

2.) NW CORNER
 2-85-41
 FD. CONCRETE MONUMENT
 6.5' DEEP; RAISED WITH 5/8"
 REBAR 6" DEEP



S.M. = SURVEY MARKER
 PLASTIC REFERENCE DISK
 AS SHOWN BELOW



I hereby certify that this land surveying document was prepared and the related survey work was performed by me or under my direct personal supervision and that I am a duly licensed Land Surveyor under the laws of the State of Iowa.

Jeffrey M. Krueger
 Jeffrey M. Krueger
 License Number 16749
 My license renewal date is December 31, 2008
 Pages covered by this seal: _____
 Date: 3-28-2007

List Corners to be Indexed

Corners	Section	Township	Range
1) N 1/4	2	85	41
2) NW	2	85	41

PN: 070520.04
 DRAWN: JMK