

96 NOV 26 AM 9:49

INST. NO. 96-3231
DENISE MEEVES, RECORDER
Denise Meeves
FEE 6.00

INDEXED
RECORDED
MVC

This document prepared by: Semke & Associates - 712-792-2276
Michael G. Semke, L.S.#10318 - 608 N. Court St., Carroll, Iowa

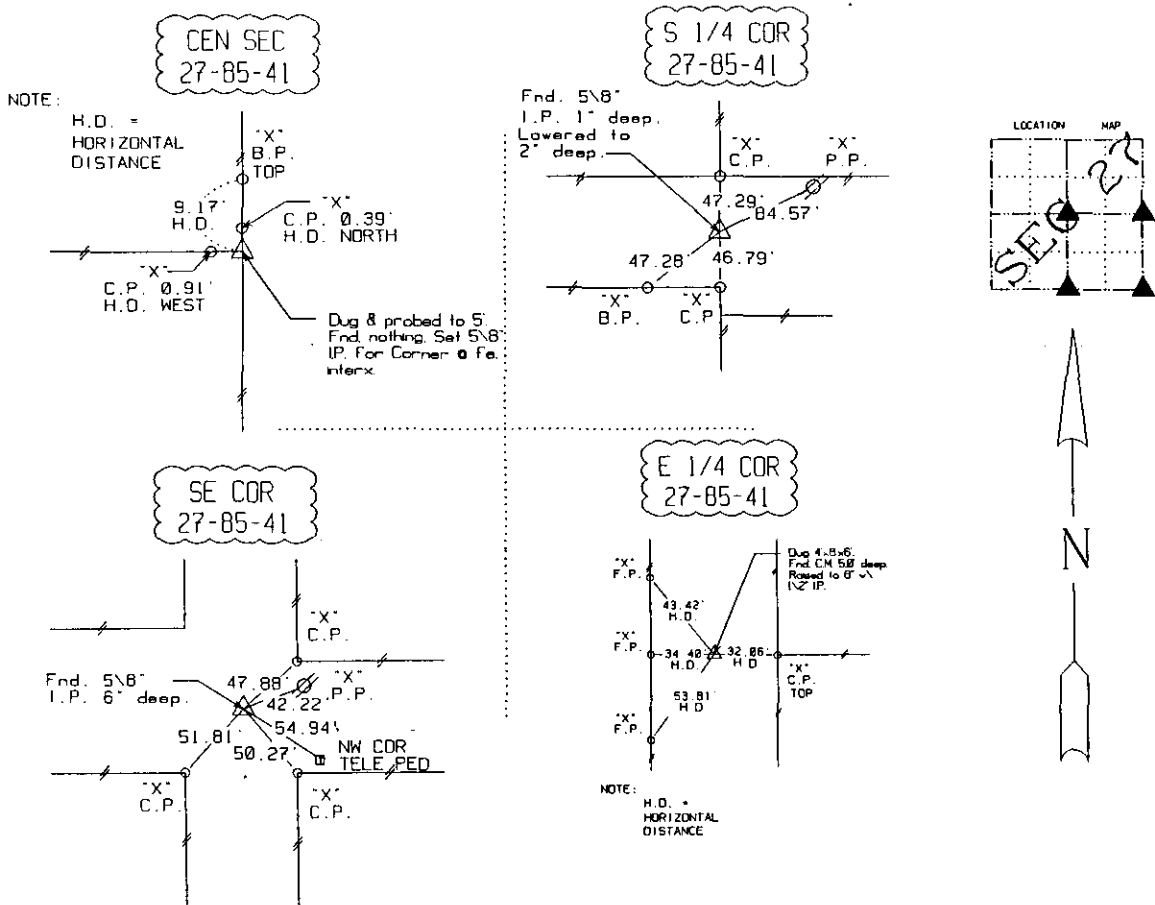
UNITED STATES PUBLIC LAND SURVEY CORNER CERTIFICATE
OF

Land Survey Monuments situated in Section 27, Township 85, Range 41, of the Fifth Principal Meridian, Crawford County, Iowa. Previously recorded in _____ in County Recorder's Office. (book, page, document number, etc.)

(Show reason for preparing this certificate, the evidence and detailed procedures used in establishing the corner positions and monumentation found or placed.)

PLAN - VIEW

(Show a minimum of three reference ties to durable physical objects, relevant monuments and physical conditions that will enable recovery of the corner.)

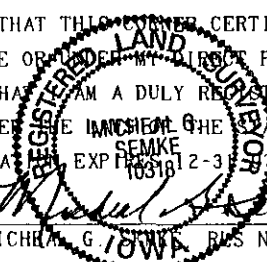


Note: All ties slope chained unless noted.

I HEREBY CERTIFY THAT THIS CORNER CERTIFICATE WAS PREPARED BY ME OR UNDER MY DIRECT PERSONAL SUPERVISION AND THAT I AM A DULY REGISTERED LAND SURVEYOR UNDER THE LAWS OF THE STATE OF IOWA. MY REGISTRATION NO. IS 10318. EXP. 12-3-96

11-25-96
DATE

Michael G. Semke
MICHAEL G. SEMKE, L.S. NO 10318



List Corners to be Indexed

Corners	Section	Twp	Range
CTR SEC	27	85	41
E 1/4	27	85	41
W 1/4	26	85	41
SE COR	27	85	41
SW COR	26	85	41
NE COR	34	85	41
NW COR	35	85	41
S 1/4	27	85	41
N 1/4	34	85	41