

INDEXED DM/DM  
 FOLLOW UP DM  
 PROOFED \_\_\_\_\_  
 SCANNED DM

Instrument #: 2016-1593  
 07/28/2016 11:11:06 AM Total Pages: 1  
 PLC PLAT CORNER CER  
 Recording Fee: \$0.00 Transfer Tax: \$0  
 Denise Meeves, Recorder, Crawford County Iowa



PREPARED BY: PAUL ASSMAN-CRAWFORD COUNTY ENGINEER'S OFFICE-COURTHOUSE-DENISON, IA.-712-263-2449

## UNITED STATES PUBLIC LAND SURVEY CORNER CERTIFICATE OF

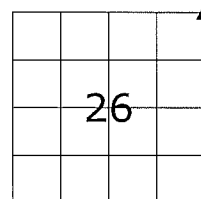
LAND SURVEY MONUMENT SITUATED IN SOLDIER TOWNSHIP, THE NORTHEAST CORNER OF SECTION 26, T-85N,  
R-41W OF THE FIFTH P.M. CRAWFORD COUNTY, IOWA.

PREVIOUSLY RECORDED AS NO. 97-2687

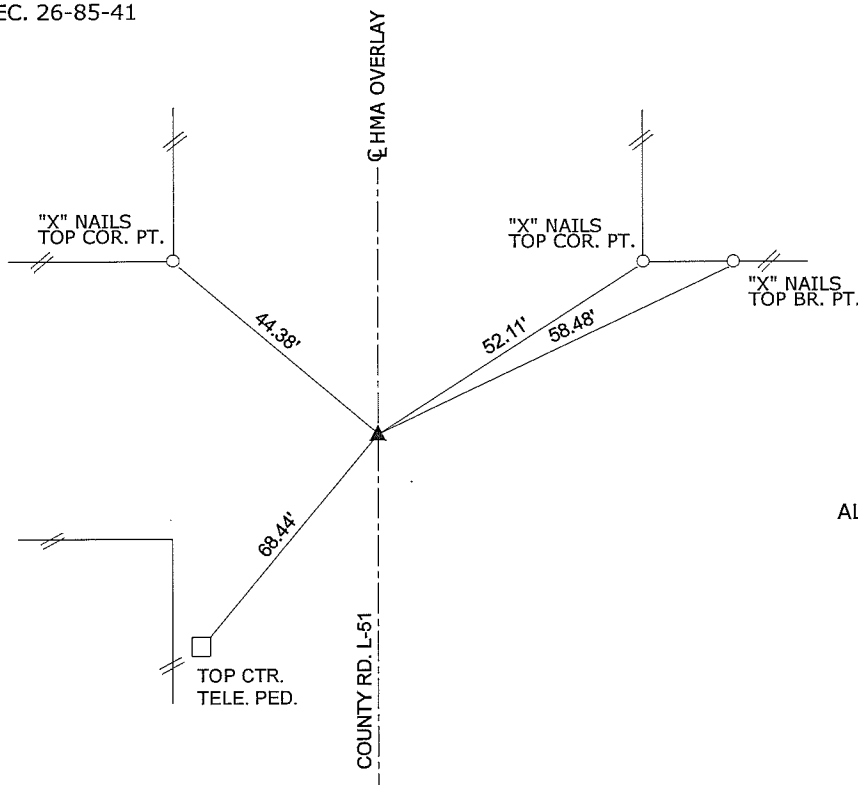
### MONUMENT DESCRIPTION AND REMARKS

NORTHEAST CORNER SEC. 26-85-41

FOUND BOLT FLUSH WITH ASPHALT USING PREVIOUS  
TIES. COMPLETED HMA OVERLAY, RESET AND RETIED  
CORNER - SET CARRIAGE BOLT 0.05' DEEP



NORTHEAST CORNER SEC. 26-85-41



ALL DISTANCES ARE PLUMB CHAINED

**CERTIFICATION:**

I HEREBY CERTIFY THAT THIS LAND SURVEYING DOCUMENT WAS PREPARED AND THE RELATED SURVEY  
WORK WAS PERFORMED BY ME OR UNDER MY DIRECT PERSONAL SUPERVISION AND THAT I AM A DULY  
LICENSED LAND SURVEYOR UNDER THE LAWS OF THE STATE OF IOWA.

Paul J. Assman Signature                      7/27/16 Date of Survey

PAUL J. ASSMAN Typed Name                      11982 L.S. No.                      12-31-16 License Renewal Date

Pages covered by this seal 1

