

RECORDED *DP DP*
 FORWARDED
 INDEXED
 SERIALIZED

Prepared by: Nathan H. Carlson Address: 3701 12th Street N, Suite 206, Phone: 320-253-9495
St. Cloud, MN 56303

UNITED STATES PUBLIC LAND SURVEY CORNER CERTIFICATE FOR

Land survey monuments situated in Section 25, Township 85N
Range 41W, of the Fifth Principal Meridian, Crawford County, Iowa.

Previously recorded in _____ in County Recorder's Office.

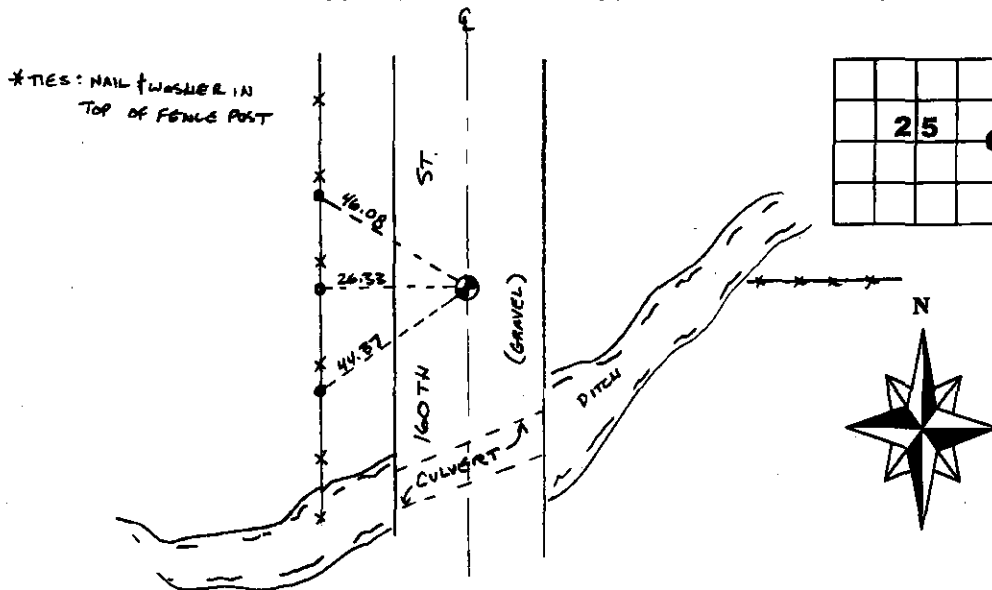
(Show reason for preparing this certificate, the evidence and detailed procedures used in establishing the corner positions & monumentation found or placed.)

MONUMENT DESCRIPTION AND REMARKS: 1939 Highway department records indicate a concrete monument was placed over a found cast iron monument and stone and reference ties were established.

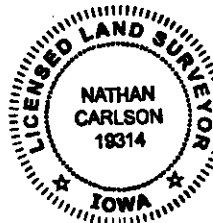
I searched the area, but found no evidence of the monument or ties. I placed a 1/2" rebar with LS Cap 19314 at the intersection of the north/south road centerline and fence line to the east. I measured 2641.07 feet to the NE section corner and 2633.42 to the SE section corner. I established reference ties as noted below.

PLAN - VIEW

(Show a minimum of three reference ties to durable physical objects, relevant monuments and physical conditions that will enable recovery of the corner.)



SEAL



SLSI-3/98

I hereby certify that this land surveying document was prepared and the related survey work was performed by me or under my direct personal supervision and that I am a duly licensed Land Surveyor under the laws of the State of Iowa.

Nathan H. Carlson 1/4/2012
 Signature Date

Typed/Printed Name: Nathan H. Carlson

License Number: 19314

My license renewal date is December 31, 2012

Pages or sheets covered by this seal: This sheet

Corners to be Indexed

Corners	Section	Twp.	Range
E 1/4	25	85N	41W