

INDEXED KM  
 FOLLOW UP \_\_\_\_\_  
 PROOFED \_\_\_\_\_  
 SCANNED \_\_\_\_\_

Instrument #: 2018-1953  
 09/19/2018 08:27:33 AM Total Pages: 1  
 PLC PLAT CORNER CER  
 Recording Fee: \$0.00 Transfer Tax: \$0  
 Denise Meeves, Recorder, Crawford County Iowa



PREPARED BY: PAUL ASSMAN-CRAWFORD COUNTY ENGINEER'S OFFICE-COURTHOUSE-DENISON, IA.-712-263-2449

## UNITED STATES PUBLIC LAND SURVEY CORNER CERTIFICATE OF

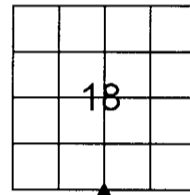
LAND SURVEY MONUMENT SITUATED IN SOLDIER TOWNSHIP, THE SOUTH 1/4 CORNER OF SECTION 18, T-85N,  
R-41W OF THE FIFTH P.M. CRAWFORD COUNTY, IOWA.

PREVIOUSLY RECORDED AS NO. \_\_\_\_\_

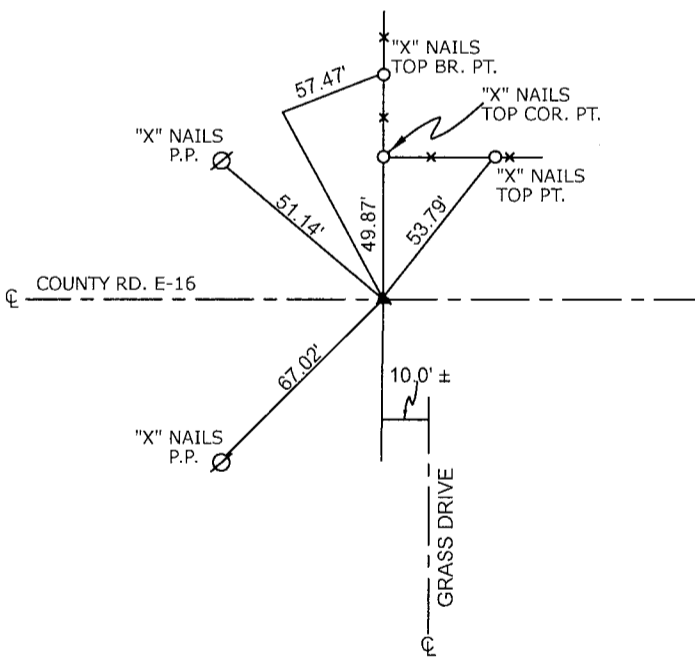
### MONUMENT DESCRIPTION AND REMARKS

SOUTH 1/4 CORNER SEC. 18-85-41

FOUND LEAD PLUG AS SET ACCORDING TO 1969 INSTR.  
 TIES. COMPLETED DIAMOND GRINDING OF ROADWAY  
 SURFACE AND RESET CARRIAGE BOLT 0.05' DEEP. RETIED  
 CORNER.



SOUTH 1/4 CORNER SEC. 18-85-41



ALL DISTANCES ARE PLUMB CHAINED

State Plane Coordinates  
 Projection - Iowa North  
 Position - NAD 83  
 Ellipsoid - GRS 1980  
 GEOID Model - IAGEoid 12A  
 Latitude: 42.16788315  
 Longitude: 95.66172461

**CERTIFICATION:**

I HEREBY CERTIFY THAT THIS LAND SURVEYING DOCUMENT WAS PREPARED AND THE RELATED SURVEY WORK WAS PERFORMED BY ME OR UNDER MY DIRECT PERSONAL SUPERVISION AND THAT I AM A DULY LICENSED LAND SURVEYOR UNDER THE LAWS OF THE STATE OF IOWA.

	2/3/19
Signature	Date of Survey
PAUL J. ASSMAN	11982
Typed Name	L.S. No.
	12-31-18
	License Renewal Date

