

INDEX \_\_\_\_\_  
 SCAN \_\_\_\_\_  
 FOLLOW UP \_\_\_\_\_  
 PROOF \_\_\_\_\_

Instrument #: 2023-0336  
 02/22/2023 09:24:48 AM Total Pages: 1  
 PLC PLAT COR CERT  
 Recording Fee: \$0.00 Transfer Tax: \$0  
 Sara Meseck, Recorder, Crawford County Iowa



PREPARED BY: PAUL ASSMAN-CRAWFORD COUNTY ENGINEER'S OFFICE-COURTHOUSE-DENISON, IA.-712-263-2449

UNITED STATES PUBLIC LAND SURVEY CORNER CERTIFICATE  
 OF

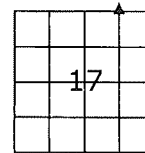
LAND SURVEY MONUMENT SITUATED IN SOLDIER TOWNSHIP, NORTHWEST CORNER NE 1/4 NE 1/4 OF SECTION  
 17, T-85N, R-41W OF THE FIFTH P.M. CRAWFORD COUNTY, IOWA.

PREVIOUSLY RECORDED AS NO. 2015-1043

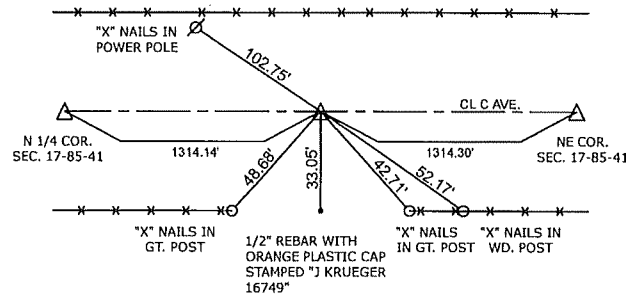
MONUMENT DESCRIPTION AND REMARKS

NW CORNER NE 1/4 NE 1/4 SEC. 17-85-41

FOUND 1/2" REBAR WITH ORANGE CAP# 16749 0.5' DEEP.  
 COUNTY CLEANED OUT DITCHES AND RAISED ROAD AND  
 SET 5/8" X 18" REBAR WITH RED CAP #11982 OVER  
 CORNER 0.4' DEEP AND RETIED.



NW CORNER NE 1/4 NE 1/4 SEC. 17-85-41



ALL TIE DISTANCES ARE MEASURED HORIZONTALLY USING GPS

CERTIFICATION:

I HEREBY CERTIFY THAT THIS LAND SURVEYING DOCUMENT WAS PREPARED AND THE RELATED SURVEY WORK WAS PERFORMED BY ME OR UNDER MY DIRECT PERSONAL SUPERVISION AND THAT I AM A DULY LICENSED LAND SURVEYOR UNDER THE LAWS OF THE STATE OF IOWA.

*Paul J. Assman*  
 Signature

2/16/23  
 Date of Survey

PAUL J. ASSMAN  
 Typed Name

11982  
 L.S. No.

12-31-24  
 License Renewal Date

Pages covered by this seal 1

