

INDEX SM km
 SCAN km
 FOLLOW UP km
 PROOF SM

Instrument #: 2022-0618
 03/08/2022 08:32:16 AM Total Pages: 1
 PLC PLAT COR CERT
 Recording Fee: \$0.00 Transfer Tax: \$0
 Denise Meeves, Recorder, Crawford County Iowa



PREPARED BY: PAUL ASSMAN-CRAWFORD COUNTY ENGINEER'S OFFICE-COURTHOUSE-DENISON, IA.-712-263-2449

UNITED STATES PUBLIC LAND SURVEY CORNER CERTIFICATE OF

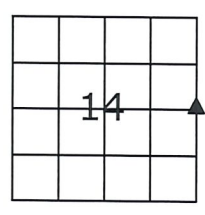
LAND SURVEY MONUMENT SITUATED IN SOLDIER TOWNSHIP, THE EAST 1/4 CORNER OF SECTION 14, T-85N,
R-41W OF THE FIFTH P.M. CRAWFORD COUNTY, IOWA.

PREVIOUSLY RECORDED AS NO. 2012-0099

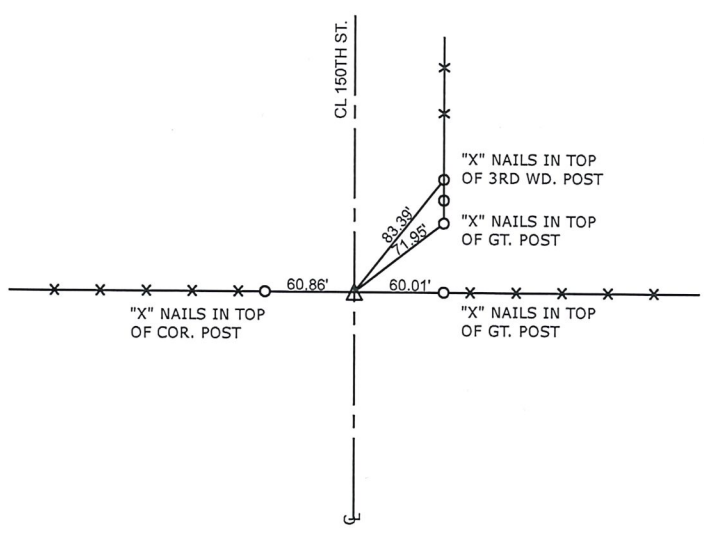
MONUMENT DESCRIPTION AND REMARKS

EAST 1/4 CORNER SEC. 14-85-41

FOUND PK NAIL
 COUNTY RESURFACED ROAD AND SET 1/2" X 4" CARRIAGE
 BOLT 1/4" BELOW SURFACE AND RETIED



EAST 1/4 CORNER SEC. 14-85-41



ALL TIE DISTANCES ARE HORIZONTAL DISTANCES MEASURED USING GPS

CERTIFICATION:

I HEREBY CERTIFY THAT THIS LAND SURVEYING DOCUMENT WAS PREPARED AND THE RELATED SURVEY WORK WAS PERFORMED BY ME OR UNDER MY DIRECT PERSONAL SUPERVISION AND THAT I AM A DULY LICENSED LAND SURVEYOR UNDER THE LAWS OF THE STATE OF IOWA.

Paul J. Assman
 Signature

2/18/22
 Date of Survey

PAUL J. ASSMAN 11982
 Typed Name L.S. No.

12-31-22
 License Renewal Date

Pages covered by this seal 1

