

INDEXED \_\_\_\_\_  
 FOLLOW UP \_\_\_\_\_  
 PROOFED \_\_\_\_\_  
 SIGNED \_\_\_\_\_

Instrument #: 2021-0070  
 01/11/2021 11:17:58 AM Total Pages: 1  
 PLC PLAT COR CERT  
 Recording Fee: \$7.00 Transfer Tax: \$0  
 Denise Meeves, Recorder, Crawford County Iowa



WILKE LAND SURVEYING INC. 401 1800th Street Panama, Iowa 51562 (712)489-2898

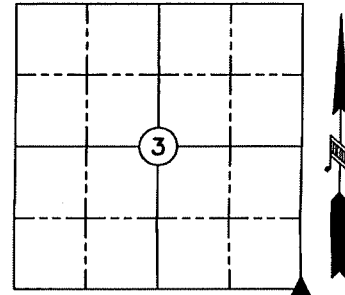
UNITED STATES PUBLIC LAND SURVEY CORNER CERTIFICATE

SECTION 3 TOWNSHIP 85N RANGE 41W COUNTY CRAWFORD

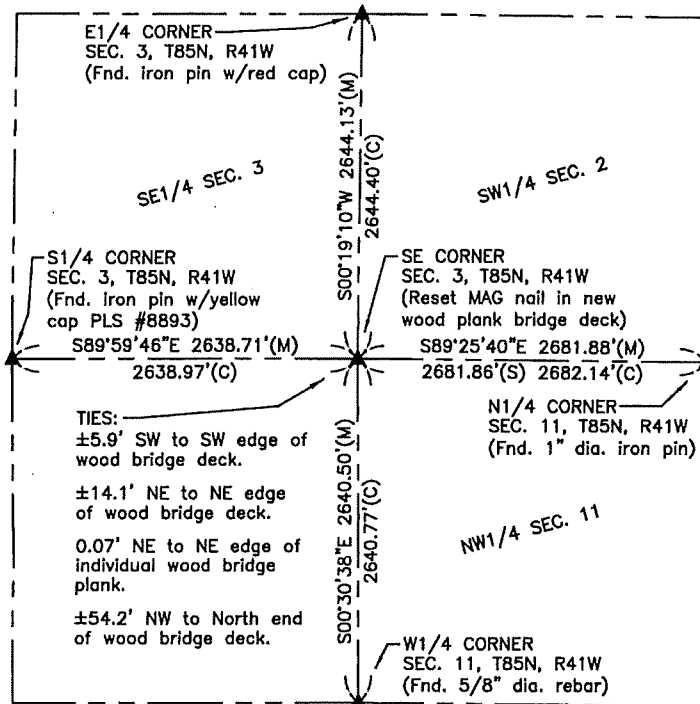
Reason for Certificate: Survey in the W1/2 SE1/4

Monument Description and Remarks:

SE CORNER — Reset MAG nail in new wood plank bridge deck using Sundquist Engineering data provided by the Crawford County Engineer's Office.

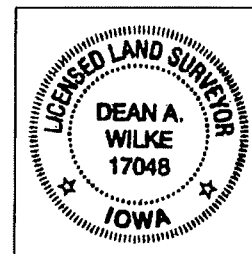


**\*\*ALL DISTANCES ARE HORIZONTAL\*\***



LEGEND

▲ SECTION OR SUBDIVISIONAL CORNER MONUMENT (MATERIAL AS NOTED)  
 (M) MEASURED BEARING & DISTANCE  
 (C) DISTANCE PROVIDED BY COUNTY ENGINEER  
 (S) RECORD SURVEY DISTANCE (INST. NO. 2006-1134)



I hereby certify that this land surveying document was prepared and the related survey work was performed by me or under my direct personal supervision and that I am a duly licensed Land Surveyor under the laws of the State of Iowa.

*Dean A. Wilke* 1/07/21  
 Dean A. Wilke Date

License number 17048  
 My license renewal date is December 31, 2021  
 Pages or sheets covered by this seal: This page only

List Corners to be Indexed

Corner	Section	Twp.	Range
SE CORNER	3	85N	41W