

Crawford County Recorder
 Denise Meeves
Fee Book 2010-3003
 12/30/2010 @03:34PM
 PIC PLAT CORNER CER # Pages: 1
 Book: Page: \$9.00
 Total Fees:

12/30/2010 03:34 PM
 Denise Meeves
 Crawford County Recorder
 Jefferson, Iowa

WARDER C. HILLHOUSE, JR. MHF ENGINEERING P.C. 300 W. MCKINLEY JEFFERSON, IA. (515)386-4101

UNITED STATES PUBLIC LAND SURVEY CORNER CERTIFICATE OF

Land Survey Monuments in Section 9 Township 83 Range 40, of the Fifth Principal Meridian, CRAWFROD County, Iowa.
 Previously recorded in _____ in County Recorder's Office.
 (book, page, document number, etc.)

(Show reason for preparing this certificate, the evidence and detailed procedures used in establishing the corner positions and monumentation found or placed.)

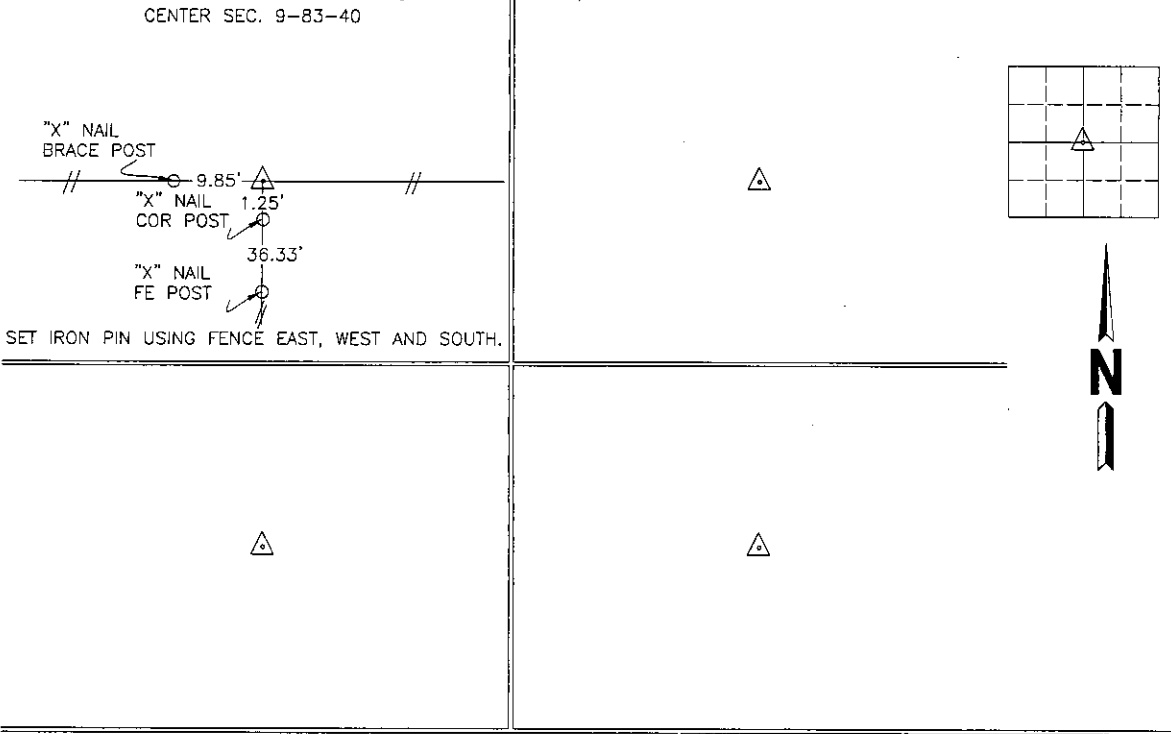
Monument Description and Remarks:

CORNER WAS LOCATED FOR SURVEY WORK IN SW1/4 OF SECTION.

PLAN - VIEW

(Show a minimum of three reference ties to durable physical objects, relevant monuments and physical conditions that will enable recovery of the corner.)

CENTER SEC. 9-83-40



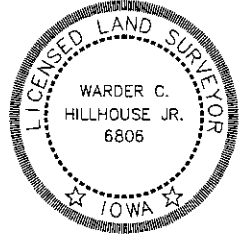
I hereby certify that this land surveying document and the related survey work was performed by me or under my direct personal supervision and that I am a duly licensed land surveyor under the laws of the state of Iowa.

Signature: Warder C. Hillhouse, Jr.
 Warder C. Hillhouse, Jr.

Date: 12/27/10 Lic. No. 6806

License Renewal Dec. 31, 2011
 Date Surveyed: 12/10

Seal



List Corners to be Indexed			
Corners	Section	Twp	Range
CENTER	9	83	40

File No. 10133-1

M.H.F. ENGINEERING, P.C.
 ENGINEERS - LAND SURVEYORS
 Jefferson, Iowa 50129 Ph. (515)386-4101