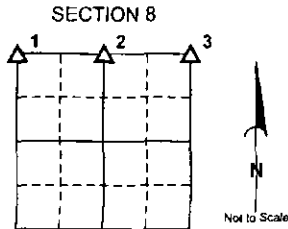


RECORDED  
INDEXED  
FILED  
CRAWFORD COUNTY IOWA

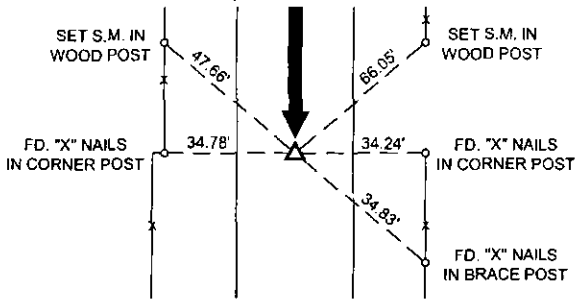
PREPARED BY AND RETURN TO: JEFFREY M. KRUEGER P.L.S., KUEHL AND PAYER LTD., 2002 WEST MAIN ST., SAC CITY, IA 50583 PH. (712)662-7859

**UNITED STATES PUBLIC LAND SURVEY CORNER CERTIFICATE**  
OF

LAND SURVEY MONUMENTS SITUATED IN SECTION 8,  
TOWNSHIP 83 NORTH, RANGE 40 WEST  
OF THE 5TH P.M., CRAWFORD COUNTY, IOWA.



**1.) NW CORNER**



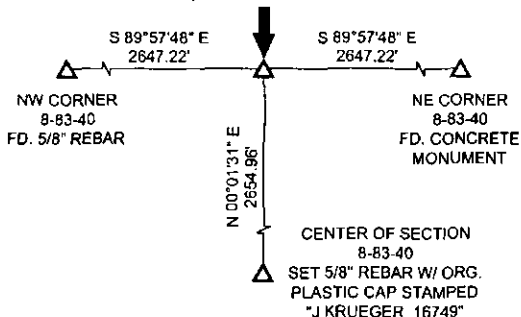
**1.) NW CORNER 8-83-40 CRAWFORD COUNTY, IOWA:**

FOUND 5/8" REBAR, 6" DEEP, 5' EAST OF CENTERLINE OF COUNTY GRAVEL ROAD.

THIS MONUMENT MATCHES WITHIN REASON THE POSITION AND MONUMENTATION SHOWN ON A SECTION CORNER CERTIFICATE BY TERRENCE CRAWFORD DATED 3/3/1994.

THIS CERTIFICATE IS BEING PREPARED BECAUSE: THERE IS NO CERTIFICATE FOR THE CORNER ON FILE WITH THE RECORDER OF THE COUNTY IN WHICH THE CORNER IS LOCATED.

**2.) N 1/4 CORNER**

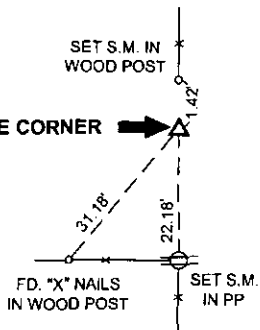


**2.) N 1/4 CORNER 8-83-40 CRAWFORD COUNTY, IOWA:**

NO RECORD OF MONUMENT AT CORNER. REFERENCE TIES FROM THE CRAWFORD COUNTY ENGINEER'S OFFICE STATE THAT A 3'X10'X21' HOLE WAS DUG ON 4/28/1941 AND THAT NOTHING WAS FOUND. SET 5/8" REBAR WITH ORANGE PLASTIC CAP STAMPED "J KRUEGER 16749", 12" DEEP, EQUIDISTANT AND ONLINE BETWEEN THE NW CORNER AND NE CORNER. NOTE: THIS POSITION FALLS IN FARM GROUND.

THIS CERTIFICATE IS BEING PREPARED BECAUSE: THERE IS NO CERTIFICATE FOR THE CORNER ON FILE WITH THE RECORDER OF THE COUNTY IN WHICH THE CORNER IS LOCATED.

**3.) NE CORNER**



**3.) NE CORNER 8-83-40 CRAWFORD COUNTY, IOWA:**

FOUND CONCRETE MONUMENT. 4" ABOVE GROUND, WITH YELLOW STEEL POST BY IT.

THIS MONUMENT MATCHES WITHIN REASON THE POSITION AND MONUMENTATION SHOWN ON EXISTING CRAWFORD COUNTY ENGINEER'S OFFICE SECTION CORNER REFERENCE TIES.

THIS CERTIFICATE IS BEING PREPARED BECAUSE: THERE IS NO CERTIFICATE FOR THE CORNER ON FILE WITH THE RECORDER OF THE COUNTY IN WHICH THE CORNER IS LOCATED.

I hereby certify that this land surveying document was prepared and the related survey work was performed by me or under my direct personal supervision and that I am a duly licensed Land Surveyor under the laws of the State of Iowa.



*Jeffrey M. Krueger* 3/30/2010  
Jeffrey M. Krueger Date:  
License Number 16749  
My license renewal date is December 31, 2010  
Pages covered by this seal 1

S.M. = SURVEY MARKER  
PLASTIC REFERENCE DISK  
AS SHOWN BELOW



**List Corners to be Indexed**

Corners	Section	Township	Range
1) NW	8	83	40
2) N 1/4	8	83	40
3) NE	8	83	40

PN: 090591  
DRAWN: JMK