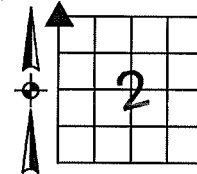


Denise Meeves RECORDER
 Crawford County, Iowa
 Instr. Number: 2017-0551
 Recorded: 3/22/2017 at 8:32:30.0 AM
 Pages 1
 Fee Amount: \$7.00
 Revenue Tax:

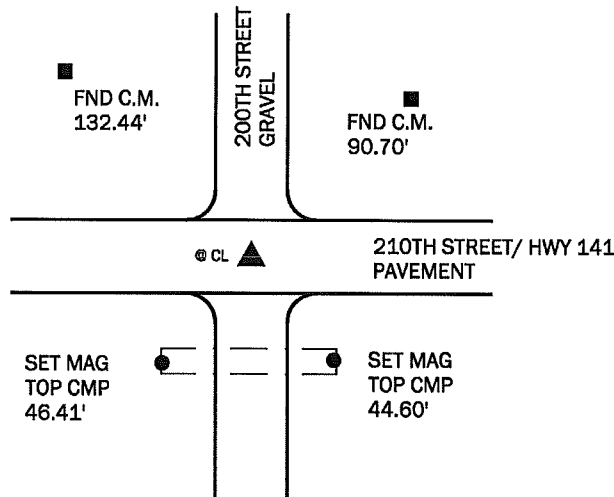
PREPARED BY AND RETURN TO: MIKE SCHULTE, SCHULTE SURVEYING, INC., 2003 390TH STREET, WESTSIDE, IA 51467 (712) 790-3489

UNITED STATES PUBLIC LAND SURVEY CORNER CERTIFICATE OF

LAND SURVEY MONUMENTS SITUATED IN SECTION 2, TOWNSHIP 83 NORTH, RANGE 40 WEST, OF THE FIFTH PRINCIPAL MERIDIAN, CRAWFORD COUNTY, IOWA. PREVIOUSLY RECORDED IN INST 2011-1326 IN COUNTY RECORDER'S OFFICE.
(book, page instrument number)



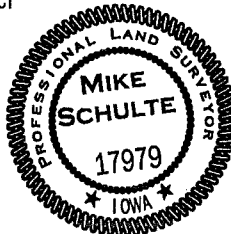
NW CORNER
 FND RUSTY NAIL - SET MAG NAIL
 N: 7251316.84 E: 16569160.48



THE SOUTH SIDE OF THE INTERSECTION HAS BEEN RE-GRADED KNOCKING OUT THE C.M.'S PREVIOUSLY REFERENCED. USED THE TWO REMAINING TIES TO SWING ARC'S AND FOUND A VERY RUSTY, ALMOST UNIDENTIFIABLE NAIL. PULLED NAIL, VERIFIED IT WAS THE CORNER MONUMENT AND RESET A MAG NAIL TO BETTER PERPETUATE THE CORNER POSITION. ADDED TWO TIES TO THE SOUTH AND RETIED. CORNER CERTIFICATE IS BEING FILED DUE TO CHANGES IN TIES AND MONUMENT REHAB.

I HEREBY CERTIFY THAT THIS LAND SURVEYING DOCUMENT WAS PREPARED BY ME OR UNDER MY DIRECT PERSONAL SUPERVISION AND THAT I AM A DULY LICENSED PROFESSIONAL LAND SURVEYOR UNDER THE LAWS OF THE STATE OF IOWA.

Mike Schulte
 MIKE SCHULTE
 DATE 2017/03/20
 LICENSE NUMBER: 17979
 LICENSE RENEWAL DATE IS DECEMBER 31, 2017
 PAGES COVERED BY THIS SEAL: 1 OF 1



*All distances are measured horizontally unless noted.

LIST CORNERS TO BE INDEXED

CORNER	SECTION	TWP	RANGE
NW COR	2	83	40
NE COR	3	83	40
SE COR	34	84	40
SW COR	35	84	40

BASIS OF BEARING

laRCS ZONE 6 - US SURVEY FEET
 laRTN DERIVED - NAD83(2011)(EPOCH 2010.00)

SCHULTE SURVEYING, INC.

DRAWN BY: MLS
 PROJ NUMBER: 17-011