

INDEXED 9-9
 FOLLOW UP 9-9
 FILED
 SCANNED

Crawford County Recorder
 Denise Reeves
Fee Book 2012-0644
 03/21/2012 09:35AM
 FLC PLAT CORNER CER # Pages: 1
 Book: Page: \$7.00
 Total Fees:

PREPARED BY - TERENCE E. CRAWFORD - SUNDQUIST ENGINEERING - 120 S. MAIN, DENISON, IOWA 51442 - PHONE (712) 263-8118

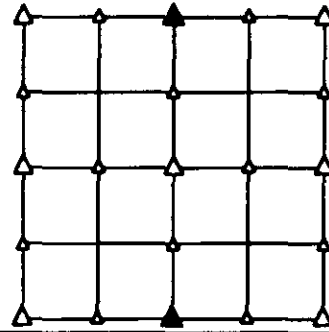
UNITED STATES PUBLIC LAND SURVEY CORNER CERTIFICATE
OF

LAND SURVEY MONUMENT SITUATED IN SECTION 27, T. 83 N, R. 40 W OF
 THE 5TH P.M., CRAWFORD COUNTY, IOWA.
 PREVIOUSLY RECORDED IN BOOK _____, PAGE _____, OTHER _____

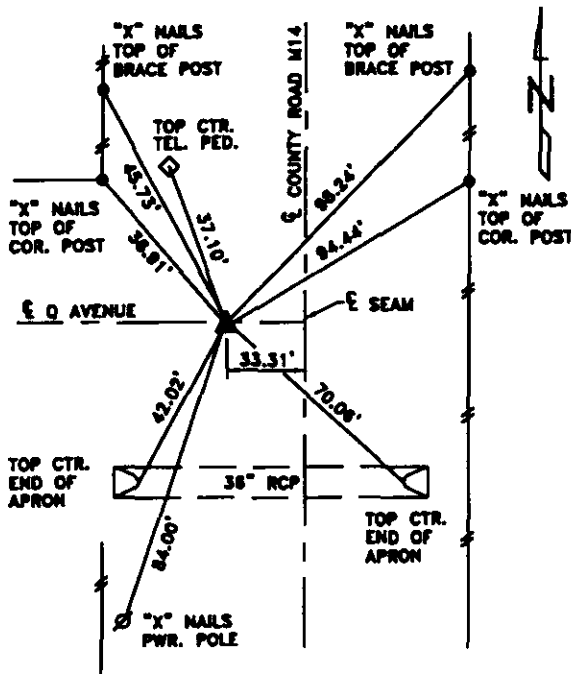
MONUMENT DESCRIPTION AND REMARKS

N1/4 CORNER - FOUND 1" DIA. IRON PIN 2.0' DEEP, RAISED WITH
 5/8" DIA. X 18" IRON PIN W/YELLOW CAP #8893
 0.5' DEEP.

S1/4 CORNER - FOUND CM 0.5' DEEP, SET 5/8" DIA. X 18" IRON
 PIN ON NO. SIDE OF CM 0.2' LOWER THAN TOP OF
 CM, CORNER IS IN LINE W/FENCE LINE NO. & 12'±
 SO. OF E-W FENCE LINE.

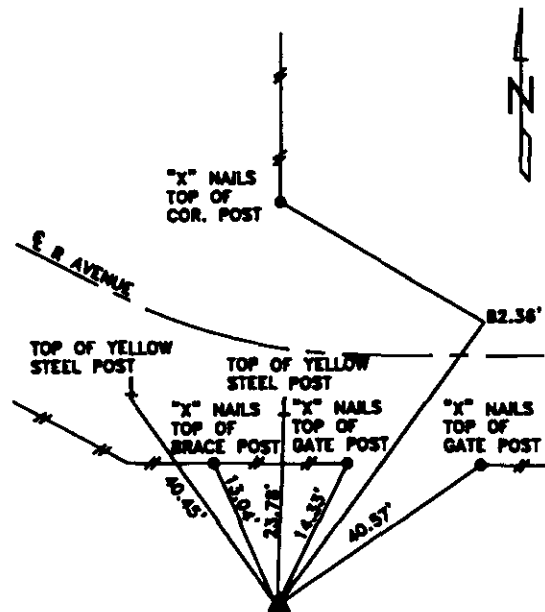


PLAN VIEW SHOWING RELATIVE LOCATION OF MONUMENT AND REFERENCE POINTS.



DISTANCES PLUMB CHAINED

N1/4 CORNER SECTION 27-83-40



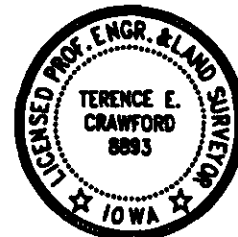
DISTANCES PLUMB CHAINED

S1/4 CORNER SECTION 27-83-40

I HEREBY CERTIFY THAT THIS LAND SURVEYING DOCUMENT WAS PREPARED
 AND THE RELATED SURVEY WORK WAS PERFORMED BY ME OR UNDER MY
 DIRECT PERSONAL SUPERVISION AND THAT I AM A DULY LICENSED LAND
 SURVEYOR UNDER THE LAWS OF THE STATE OF IOWA.

Terence E. Crawford 3-12-12
 TERENCE E. CRAWFORD DATE
 IA LICENSE NO. 8893

EXP. DATE DECEMBER 31, 2013



SE PROJECT NO. 20912
 DRAWN BY: LLI