

4.23-93. 40

Found remains of hand
wood stake and few pieces of
shockley. Found a lot of
ties.

26.7 S. from top post

258.8 W. " " top Perry truss

20.6 NW " " C.P. for S.

29.3 NW " " top post

found S. from W 233 = 267.26 to Wood
found to C.M. = 267.53

38 11-13-39 - Est'd. corner by
33 ties from B.P.S. 21/4 W
Set C.M.

Ties from "X" nails

52.7 S.E. from Wood Post

33.4 S.E. from Wood Post

49.5 NW from Con Post

54.3 NW from Bowler Pole

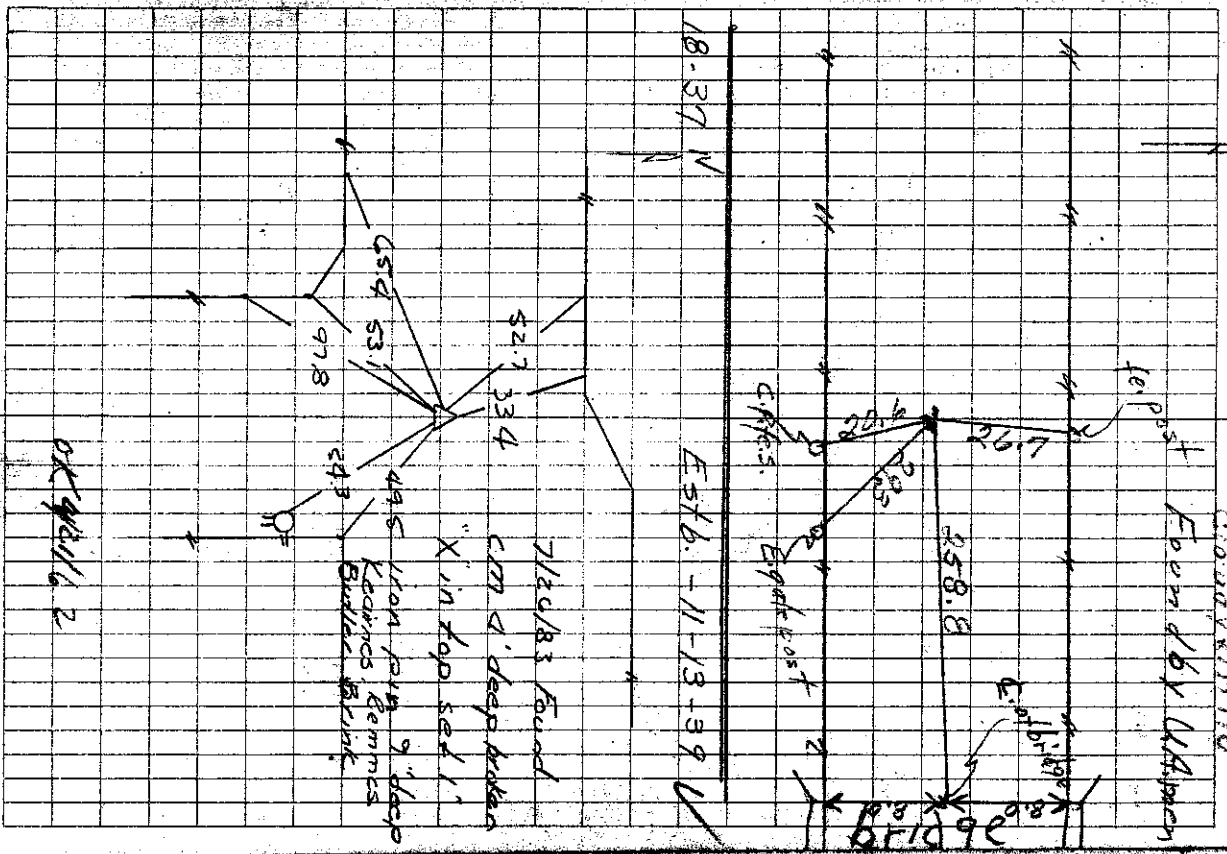
97.8 N.E. from Wood Post

53.1 N.E. from Corner Post

65.4 N.E. from Wood Post

Found - 3-19-41
Notes - P.S. id
found remains

Found by W. Johnson



OK wall 2