

Crawford County Recorder  
Denise Meeves  
**Fee Book 2008-1643**  
06/09/2008 @02:33PM  
PLC PLAT CORNER CER  
Book: Page: # Pages: 1  
Total Fees: \$7.00

RECORDED  
 INDEXED  
 SERIALIZED  
 JUN 10 2008  
 CRAWFORD COUNTY IOWA

WILKE LAND SURVEYING INC. 401 1800th Street Panama, Iowa 51562 (712)489-2898

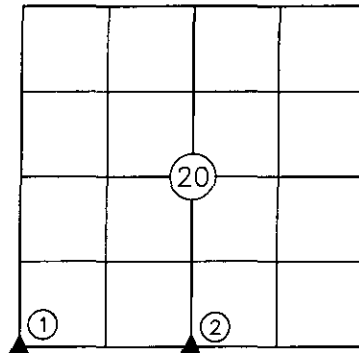
## UNITED STATES PUBLIC LAND SURVEY CORNER CERTIFICATE

SECTION 20 TOWNSHIP 83N RANGE 40W COUNTY CRAWFORD

Certificate Prepared For: Survey of Lot 1 of the W1/2 SW1/4  
(No record corner certificate for these corners)

Monument Description and Remarks:

- ① - Farmer has put down some old slated concrete hog shed floor w/rebar in them, starting in the road and extending into the farm field driveway to the Southeast. No record of a WPA concrete monument, just a nail for this corner. Set a 5/8" dia. by 24" rebar w/orange cap PLS #17048 (0.3' deep) by local evidence being the fence lines South & East.
- ② - Found concrete monument w/brass disc (flush) 1' from the top edge of a deep creek to the North. Set a rebar along the South edge for detection purposes. The monument will eventually fall into the creek with erosion.



LICENSED LAND SURVEYOR

**DEAN A. WILKE**

17048

IOWA

I hereby certify that this land surveying document was prepared and the related survey work was performed by me or under my direct personal supervision and that I am a duly licensed Land Surveyor under the laws of the State of Iowa.

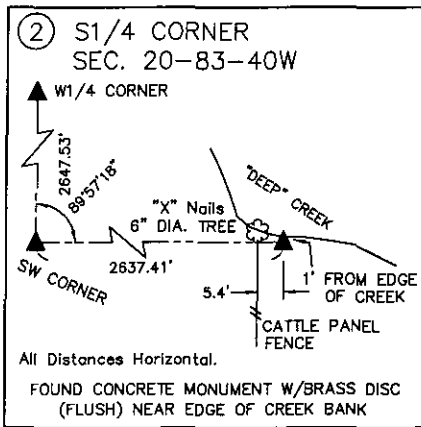
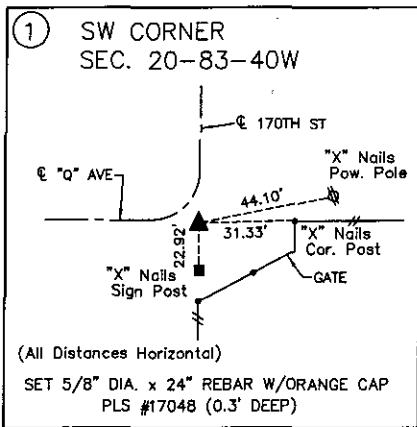
*Dean A. Wilke* 6/10/08

Dean A. Wilke Date

License number 17048

My license renewal date is December 31, 2009

Pages or sheets covered by this seal: This page only



List Corners to be Indexed			
Corner	Section	Twp.	Range
SW CORNER	20	83N	40W
S1/4 Corner	20	83N	40W