

INDEXED _____
FOR LOW UP _____
RECORDED _____

FILED DENISON, IOWA
CRAWFORD COUNTY

97 MAY -8 AM 10:39

INST. NO. 97-1169

DENISE MEEVES, RECORDER

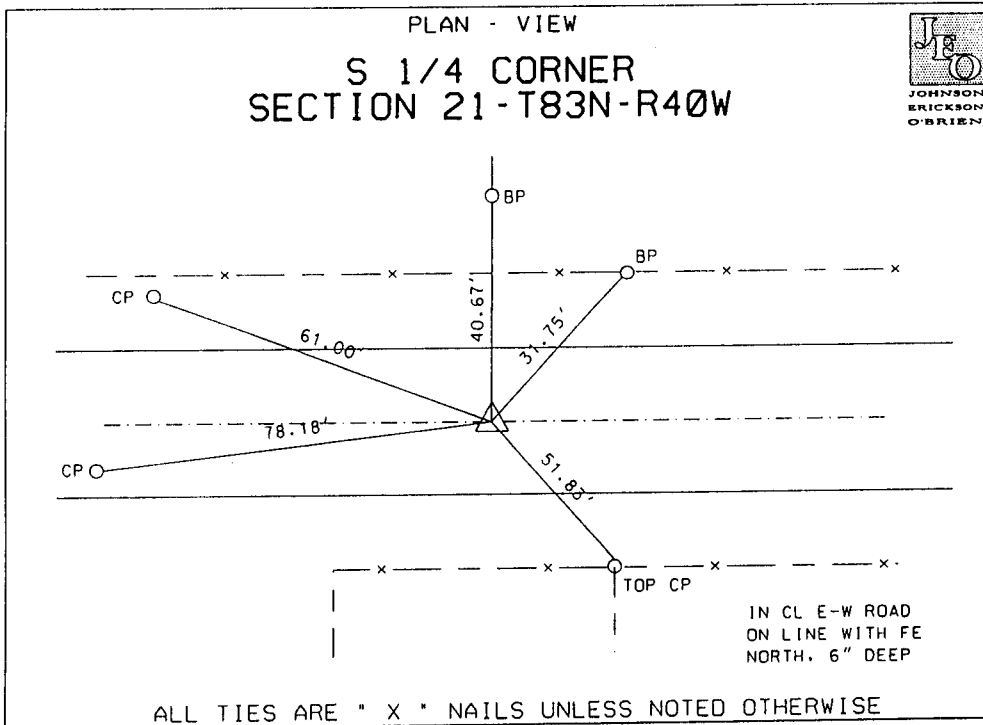
Denise Meeves
FEE \$6.00

GEORGE A. PARRIS, PE, LS, JOHNSON-ERICKSON-O'BRIEN, CARROLL, IOWA 51401, 712-792-9711

LAND SURVEY MONUMENT SITUATED IN SECTION 21,
TOWNSHIP 83N, RANGE 40W, OF THE 5TH P.M.,
CRAWFORD COUNTY, IOWA.

MONUMENT DESCRIPTION AND REMARKS:

DUG WITH MACHINE AT APPROXIMATE CORNER BUT DID NOT LOCATE. SET 5/8" X 24"
REBAR WITH CAP #12108 ON LINE WITH FENCE NORTH AND IN CL OF ROAD BASED ON
EXISTING TIES AND DISCUSSION WITH CRAWFORD COUNTY ENGINEER.



I hereby certify that this land surveying document was prepared and the related survey work was performed by me or under my direct personal supervision and that I am a duly licensed Land Surveyor under the laws of the State of Iowa.

George A. Parris 4/30/97
Date
George A. Parris License Number: 12108
My license renewal date is December 31, 1998
Sheets covered by this seal:
Sheet 1 - 1

List Corner to be Indexed

Corner	Section	Twp	Range
S 1/4 CORNER	21	83	40