

FILED IN BOOK 2001-1750
 2001 JUN 21 AM 9:18
 DIST. REC. DENISE MEEVES, RECORDER
 Daniel Meewe
 JUN 20 2001
 INDEXED FOLLOW UP PROOFED

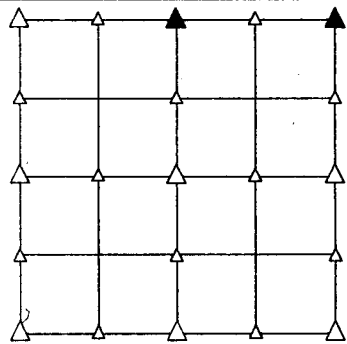
PREPARED BY - TERENCE E. CRAWFORD - SUNDQUIST ENGINEERING - 120 S. MAIN, DENISON, IOWA 51442 - PHONE (712)263-8118

UNITED STATES PUBLIC LAND SURVEY CORNER CERTIFICATE OF

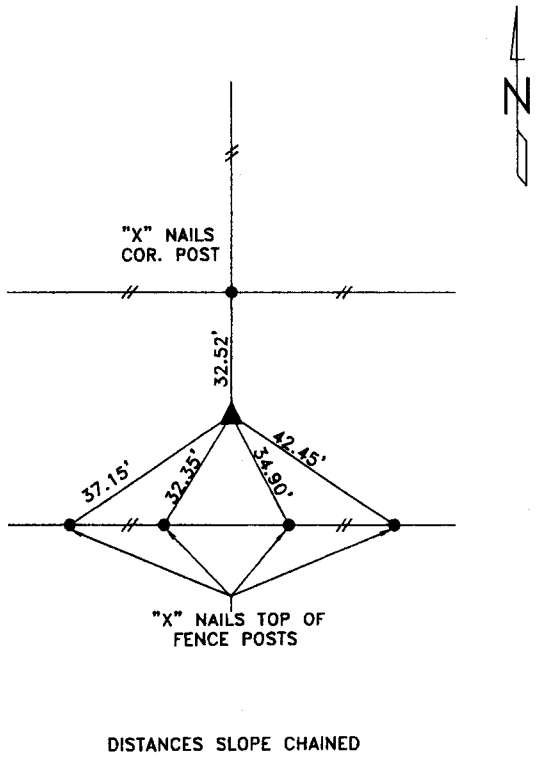
LAND SURVEY MONUMENT SITUATED IN SECTION 25, T 83 N, R 40 W OF
 THE 5TH P.M., CRAWFORD COUNTY, IOWA.
 PREVIOUSLY RECORDED IN BOOK _____, PAGE _____, OTHER _____

MONUMENT DESCRIPTION AND REMARKS

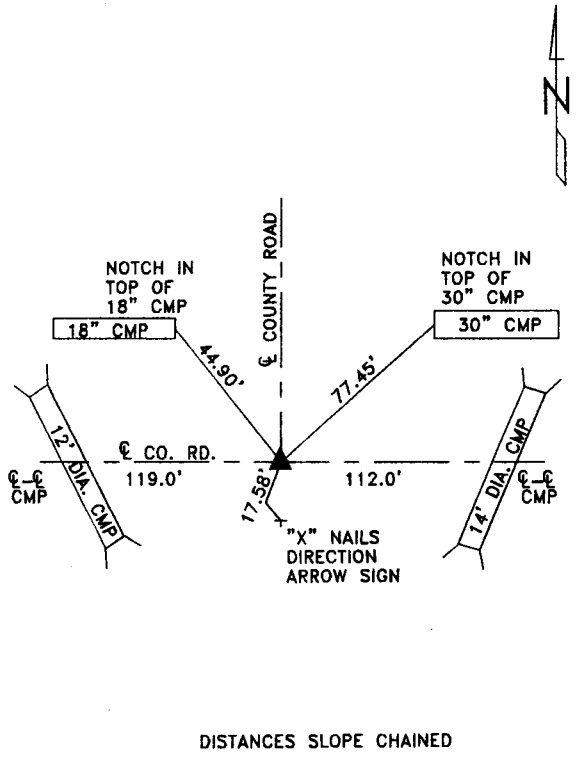
N1/4 CORNER - SET 5/8" DIA. x 18" IRON PIN W/YELLOW CAP #8893, 6" DEEP, FROM OLD COUNTY ROAD PLANS.
 NE CORNER - FOUND 1/2" IRON PIN, 6" DEEP.



PLAN VIEW SHOWING RELATIVE LOCATION OF MONUMENT AND REFERENCE POINTS.



DISTANCES SLOPE CHAINED
 N1/4 CORNER SECTION 25-83-40

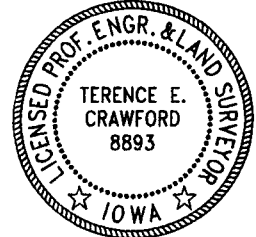


DISTANCES SLOPE CHAINED
 NE CORNER SECTION 25-83-40

I HEREBY CERTIFY THAT THIS LAND SURVEYING DOCUMENT WAS PREPARED AND THE RELATED SURVEY WORK WAS PERFORMED BY ME OR UNDER MY DIRECT SUPERVISION AND THAT I AM A DULY LICENSED LAND SURVEYOR UNDER THE LAWS OF THE STATE OF IOWA.

Terence E. Crawford
 TERENCE E. CRAWFORD
 IA LICENSE NO. 8893

JUN 20 2001
 DATE
 EXP. DATE DECEMBER 31, 2001



SE PROJECT NO. 22901
 DRAWN BY: LMD