

FILED DENISON, IOWA
 CRAWFORD COUNTY
 2001 JUN 21 AM 9:21 INDEXED
 FOLLOW UP 7/14
 PROTECTED
 INST. NO. 2001-1753
 DENISE MEEVES, RECORDER
Denise Meeves
 FEE \$ 6.00

PREPARED BY - TERENCE E. CRAWFORD - SUNDQUIST ENGINEERING - 120 S. MAIN, DENISON, IOWA 51442 - PHONE (712)263-8118

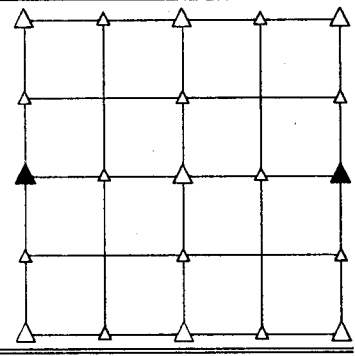
UNITED STATES PUBLIC LAND SURVEY CORNER CERTIFICATE OF

LAND SURVEY MONUMENT SITUATED IN SECTION 25, T 83 N, R 40 W OF
 THE 5TH P.M., CRAWFORD COUNTY, IOWA.
 PREVIOUSLY RECORDED IN BOOK _____, PAGE _____, OTHER _____

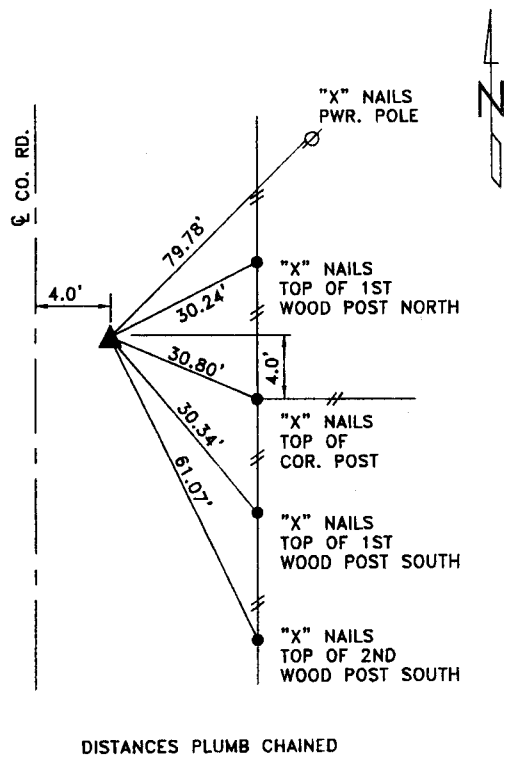
MONUMENT DESCRIPTION AND REMARKS

W1/4 CORNER - SET 5/8" DIA. x 18" IRON PIN W/YELLOW CAP #8893, 5" DEEP, SET AT SPLIT BETWEEN NW & SW CORNERS AND ON SPLIT OF R-O-W.

E1/4 CORNER - SET 5/8" DIA. x 18" IRON PIN W/YELLOW CAP #8893, FLUSH, SET AT SPLIT AND ON LINE BETWEEN NE & SE CORNERS.

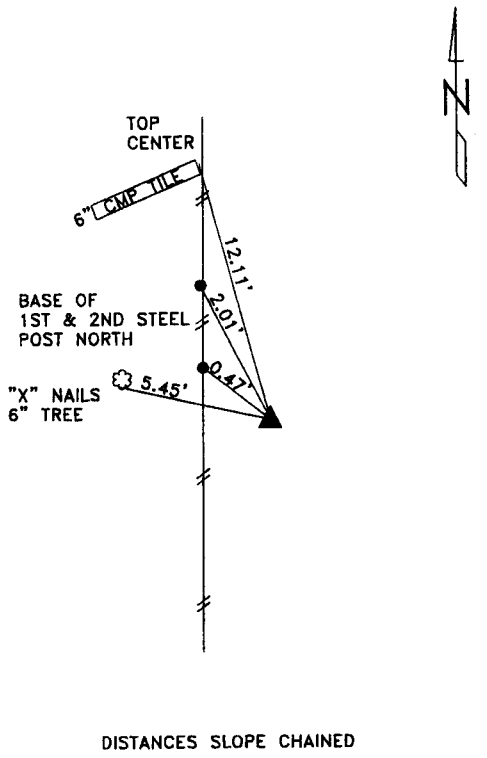


PLAN VIEW SHOWING RELATIVE LOCATION OF MONUMENT AND REFERENCE POINTS.



DISTANCES PLUMB CHAINED

W1/4 CORNER SECTION 25-83-40



DISTANCES SLOPE CHAINED

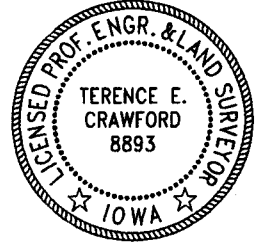
E1/4 CORNER SECTION 25-83-40

I HEREBY CERTIFY THAT THIS LAND SURVEYING DOCUMENT WAS PREPARED AND THE RELATED SURVEY WORK WAS PERFORMED BY ME OR UNDER MY DIRECT SUPERVISION AND THAT I AM A DULY LICENSED LAND SURVEYOR UNDER THE LAWS OF THE STATE OF IOWA.

Terence E. Crawford JUN 20 2001
 TERENCE E. CRAWFORD DATE

IA LICENSE NO. 8893

EXP. DATE DECEMBER 31, 2001



SE PROJECT NO. 22901
 DRAWN BY: LMD