

1999 DE 13 AM 11:38

99-3322

INST. NO. DENISE MEEVES, RECORDER

*Denise Meeves*

FEE \$6.00

*Mary Eiten, Deputy*

This document prepared by: Semke & Associates - 712-792-2276  
Micheal G. Semke, L.S. #10318 - 608 N. Court St., Carroll, Iowa

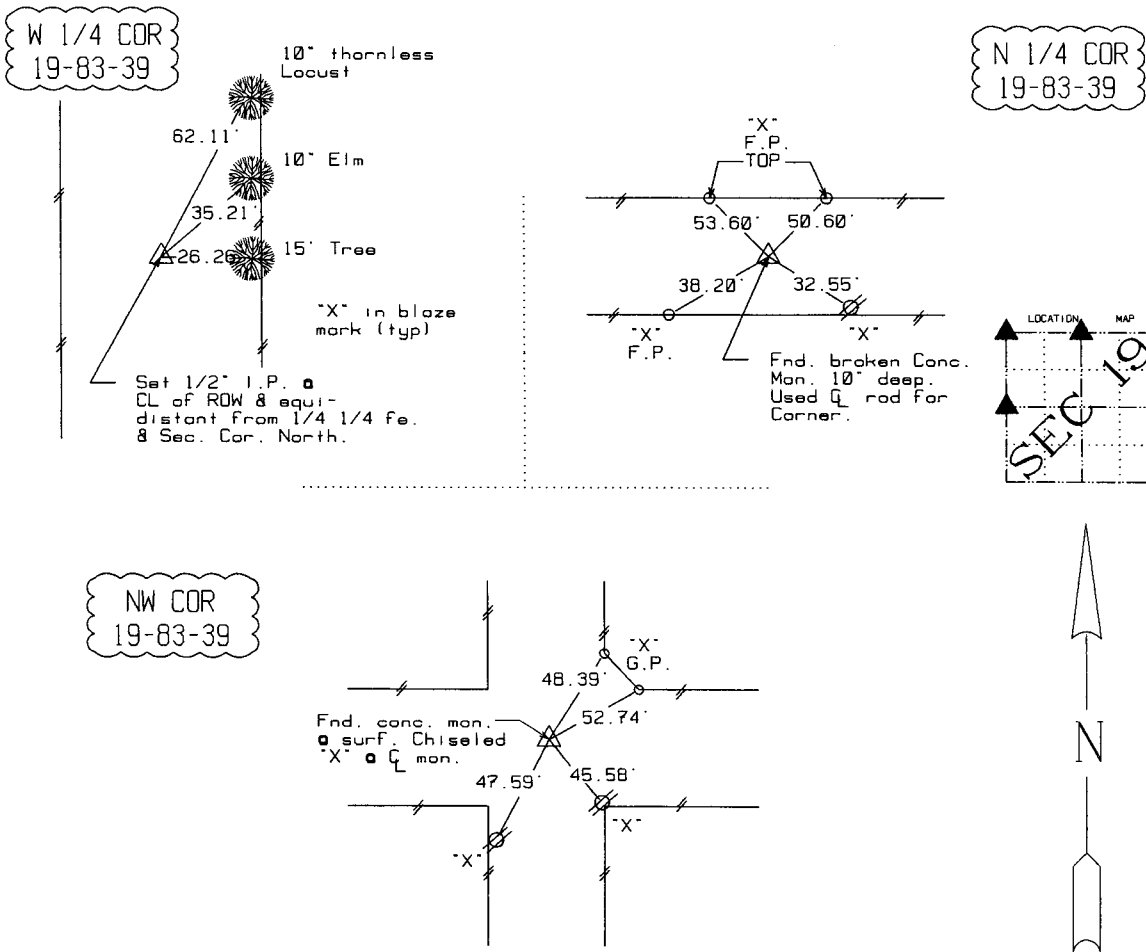
UNITED STATES PUBLIC LAND SURVEY CORNER CERTIFICATE  
OF

Land Survey Monuments situated in Section 19, Township 83, Range 39, of the Fifth Principal Meridian, Crawford County, Iowa. Previously recorded in \_\_\_\_\_ in County Recorder's Office. (book, page, document number, etc.)

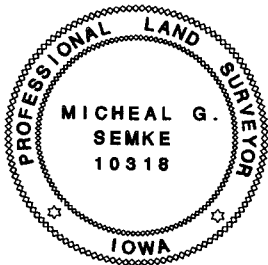
(Show reason for preparing this certificate, the evidence and detailed procedures used in establishing the corner positions and monumentation found or placed.)

PLAN - VIEW

(Show a minimum of three reference ties to durable physical objects, relevant monuments and physical conditions that will enable recovery of the corner.)



Note: All ties slope chained unless noted.



I HEREBY CERTIFY THAT THIS CORNER CERTIFICATE WAS PREPARED BY ME OR UNDER MY DIRECT PERSONAL SUPERVISION AND THAT I AM A PROFESSIONAL LAND SURVEYOR UNDER THE LAWS OF THE STATE OF IOWA.

MY REGISTRATION IS SUBJECT TO RENEWAL 12-31-99.

12/10/99  
DATE

*Micheal Semke*  
MICHAEL G. SEMKE, RLS NO 10318

List Corners to be Indexed			
Corners	Section	Twp	Range
W 1/4	19	83	39
E 1/4	24	83	40
N 1/4	19	83	39
S 1/4	18	83	39
NW COR	19	83	39
NE COR	24	83	40
SE COR	13	83	40
SW COR	18	83	39