

FILED DENISON, IOWA  
2003 NOV 12 AM 11:27

INDEXED  
FILED  
RECORDED

2003-4294  
DENISE MEEVES  
DENISE MEEVES, RECORDER  
Denise Meeves  
FFF no fee  
Mary Eiten, Deputy

PREPARED BY: MICKAEL BERNDT  
CRAWFORD COUNTY ENGINEERS OFFICE - COURTHOUSE - DENISON, IA. - 712-263-2449

# UNITED STATES PUBLIC LAND SURVEY CORNER CERTIFICATE OF

## LAND SURVEY MONUMENT SITUATED IN PARADISE TOWNSHIP, THE NORTHWEST CORNER OF SECTION 22, T-83N, R-40W OF THE 5TH P.M. CRAWFORD COUNTY, IOWA.

### MONUMENT DESCRIPTION AND REMARKS

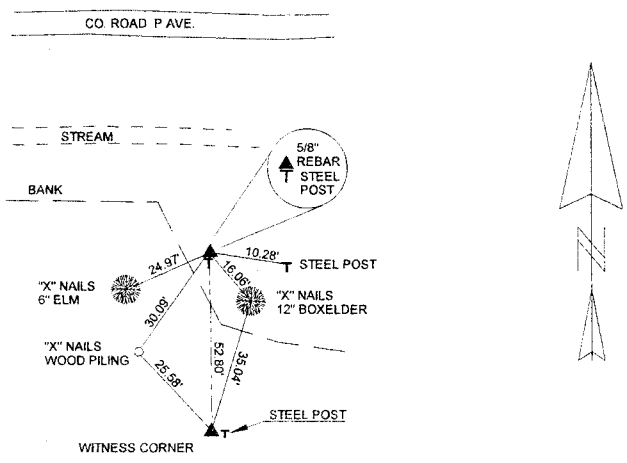
NORTHWEST CORNER SEC. 22-83-40

FOUND WITNESS CORNER.  
PLACED STEEL POST ON EAST SIDE AND DO TO THE CHANGE IN THE CHANNEL WE WERE ABLE TO SET THE ACTUAL CORNER. SET 5/8" DIA. X 14" REBAR WITH YELLOW CAP #14808 TO SURFACE WITH STEEL POST ON SOUTH SIDE.

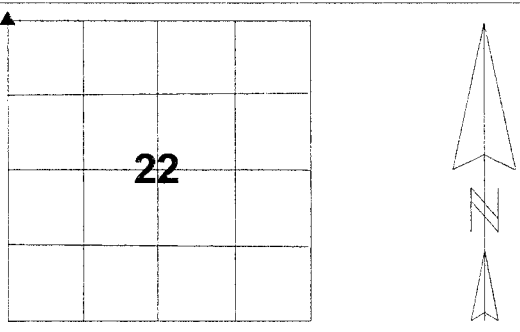
### PLAN VIEW SHOWING RELATIVE LOCATION OF MONUMENT AND REFERENCE POINTS.

NORTHWEST CORNER SEC. 22-83-40  
SET 5/8" DIA. X 14" REBAR WITH  
YELLOW CAP #14808 TO SURFACE

DISTANCES ARE SLOPED CHAINED



CORNER: NORTHWEST  
SECTION: 22  
TOWNSHIP: 83N  
RANGE: 40W



I HEREBY CERTIFY THAT THIS LAND SURVEYING DOCUMENT WAS PREPARED AND THE RELATED SURVEY WORK WAS PERFORMED BY ME OR UNDER MY DIRECT PERSONAL SUPERVISION AND THAT I AM A DULY LICENSED LAND SURVEYOR UNDER THE LAWS OF THE STATE OF IOWA.

*Mickael F. Berndt*  
M' EL F. BERNDT  
IA. LICENSE NO. 14808

11-12-03  
DATE  
EXP. DATE 12-31-04

