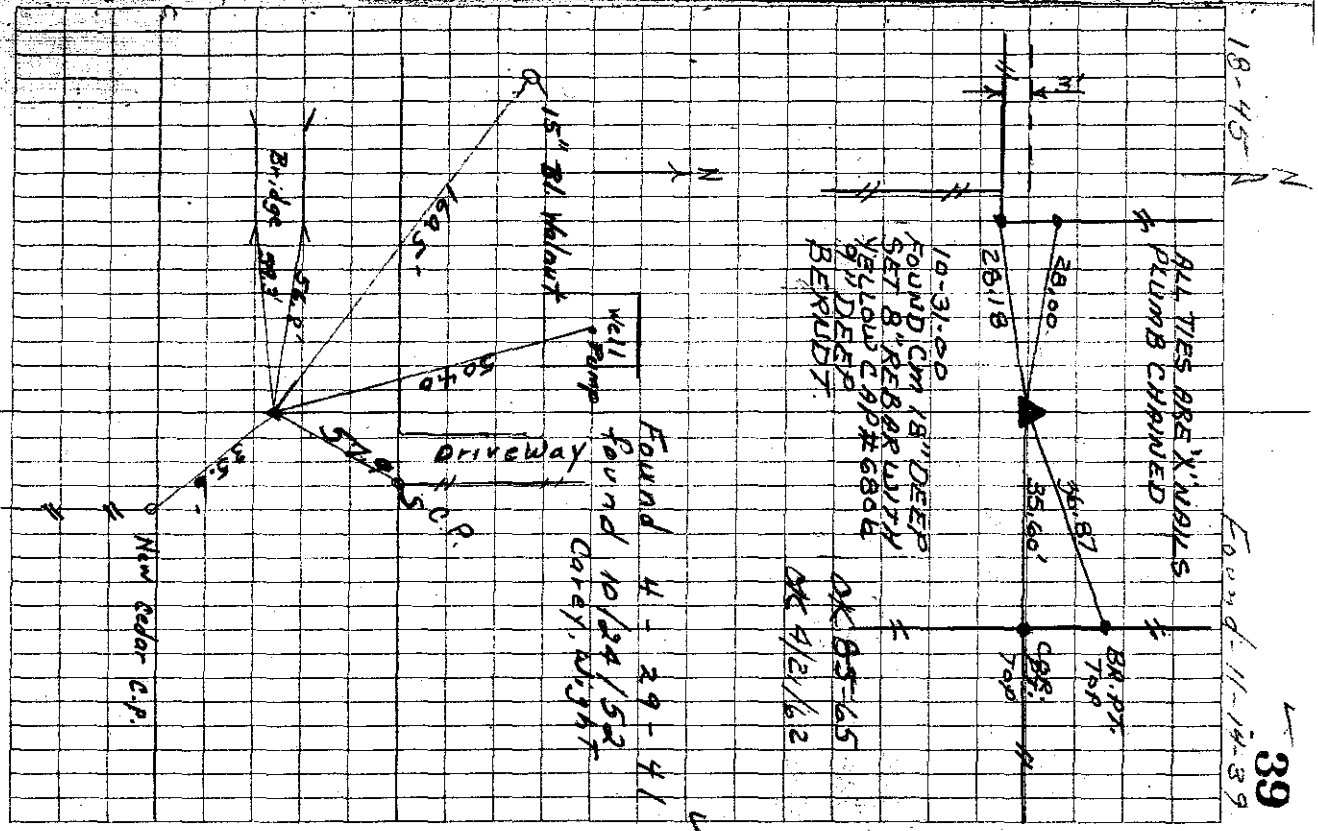


19-20	11-14-39	found seven whole brick 3 broken brick 16" deep Lowered and set C.M.
		ties from x-spts in cor posts
25.0	ENE	from cor post
45.6	SSE	" " " "
21.5	WSW	" " " "
23.1	W	" " " "
		14" box Elder tree
		12" " " "
		" " " "
		Cor post
18		
19		
	Found	evidence indicated in
	Mc 55, page 121;	1 rock
	5 X 8 X 14,	1 rock 2 X 5 X 5,
	1 small rock	2 X 2 X 3,
	1 cultivator shovel,	3 very
	small brick chips.	Lowered and
	set C.M.	
	Ties	
	35.6	N W from New cedar c.p.
	59.3'	E NE " " Noted in bridge upright
	56.8'	E SE " " " "
	160.5'	SE " " 15" Bl Walnut tree
	504.0'	SE " " Well pump
	37.9	SW " " corner post



S.V.