

INDEXED DM  
 FILED MF  
 RECORDED MS  
 SUBMITTED

This document prepared by : Semke & Associates - 712-792-2276  
 Micheal G. Semke, L.S. #10318 - 716 N. Crawford St. - Carroll, Iowa

UNITED STATES PUBLIC LAND SURVEY CORNER CERTIFICATE of  
 Land Survey Monuments situated in Section 11, Township 83 North, Range 40  
 West of the Fifth Principal Meridian, Crawford County, Iowa.  
 Previously recorded in Book , Page in County Recorder's Office.

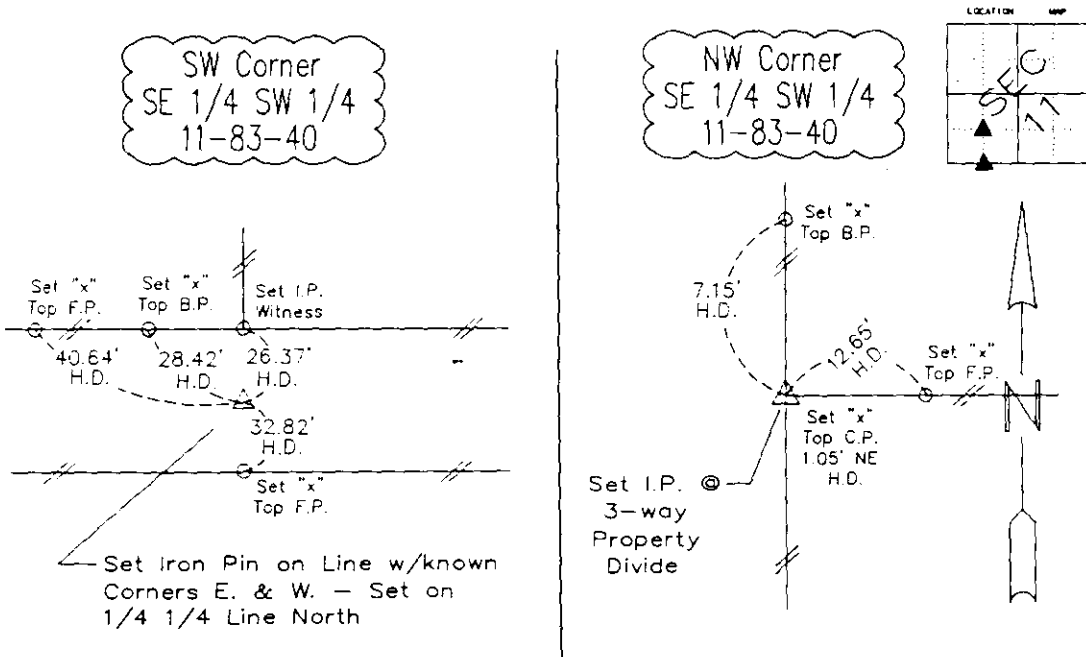
(Show reason for preparing this certificate, the evidence and detailed procedures used in establishing the corner positions and monumentation found or placed.)

NW Corner Set Iron Pin @ 3-way Property  
 SE 1/4 SW 1/4 Divide - Theoretical Corner No Good  
 SW Corner Set Iron Pin on Line w/known  
 SE 1/4 SW 1/4 Corners E. & W. - Set on 1/4 1/4  
 Line North

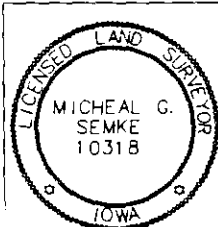
Note: All pins set are 1/2" x 24" Rerod w/Yellow Cap #10318 unless noted otherwise.

PLAN - VIEW

(Show a minimum of three reference ties to durable physical objects, relevant monuments and physical conditions that will enable recovery of the corner.)



Note: All ties slope chained unless noted otherwise - H.D. = Horz. Dist.



I HEREBY CERTIFY THAT THIS LAND SURVEYING DOCUMENT WAS PREPARED AND RELATED SURVEY WORK WAS PERFORMED BY ME OR UNDER MY DIRECT PERSONAL SUPERVISION AND THAT I AM A DULY LICENSED LAND SURVEYOR UNDER THE LAWS OF THE STATE OF IOWA.

*Micheal G. Semke* 4/18/11  
 Signature Date  
 Micheal G. Semke, L.S. No. 10318  
 Printed or Typed Name

List Corners to be Indexed

Corners	Section	Twp	Range
SW Cor. SE 1/4 SW 1/4	11	83	40
NW Cor. SE 1/4 SW 1/4	11	83	40

Pages or sheets covered by this seal THIS PAGE My license renewal date is 12/31/11.