

2002 MAY -2 PM 3:06  
 2002-1591  
 DENISE MEWER  
 RECORDER

INDEXED  
 FILED

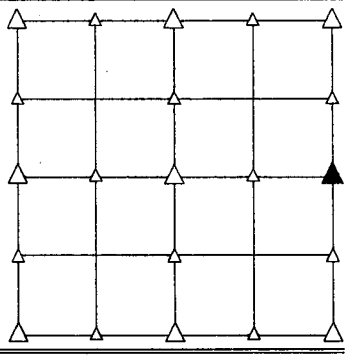
PREPARED BY - TERENCE E. CRAWFORD - SUNDUQUIST ENGINEERING - 120 S. MAIN, DENISON, IOWA 51442 - PHONE (712)263-8118

**UNITED STATES PUBLIC LAND SURVEY CORNER CERTIFICATE  
 OF**

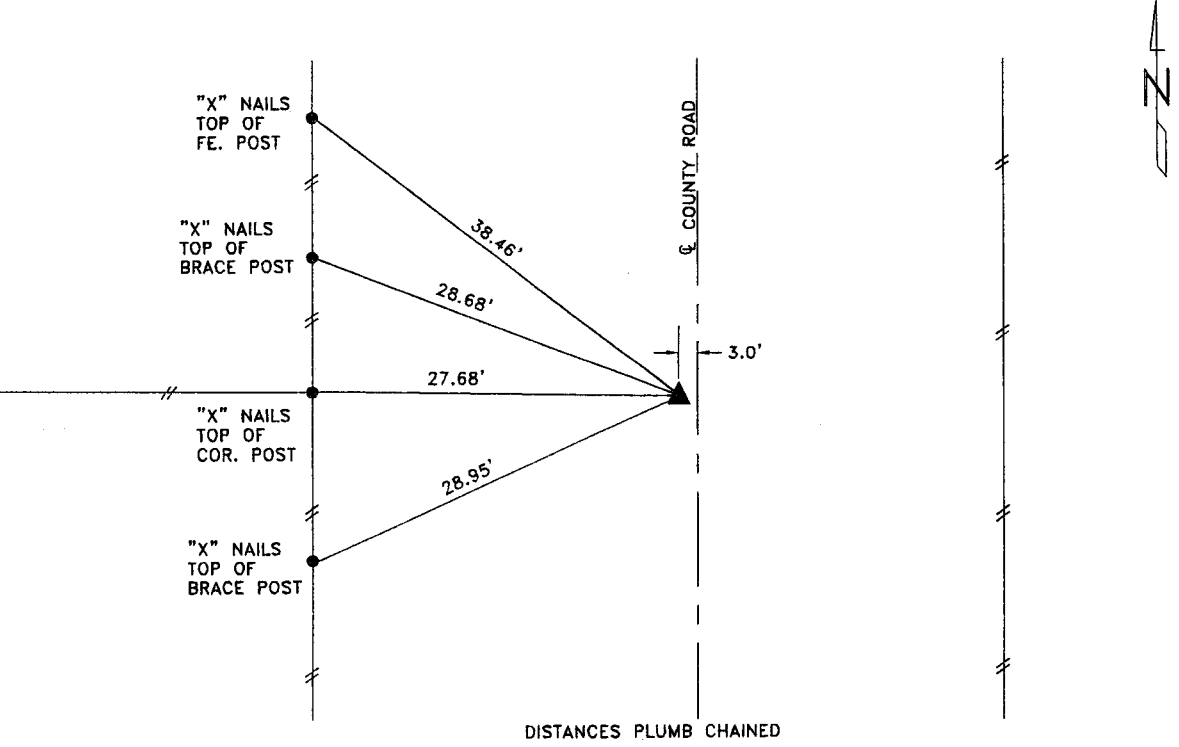
LAND SURVEY MONUMENT SITUATED IN SECTION 14, T 83 N, R 40 W OF  
 THE 5TH P.M., CRAWFORD COUNTY, IOWA.  
 PREVIOUSLY RECORDED IN BOOK \_\_\_\_\_, PAGE \_\_\_\_\_, OTHER \_\_\_\_\_

**MONUMENT DESCRIPTION AND REMARKS**

E1/4 CORNER - SET 5/8" DIA. X 18" IRON PIN W/YELLOW CAP  
 #8893, 0.40' DEEP, SET ON LINE BETWEEN SE COR.  
 OF SEC. 14 AND NORTH WITNESS COR. AT NE COR.  
 OF SEC. 14 AND IN LINE WITH FENCE LINE WEST.



**PLAN VIEW SHOWING RELATIVE LOCATION OF MONUMENT AND REFERENCE POINTS.**

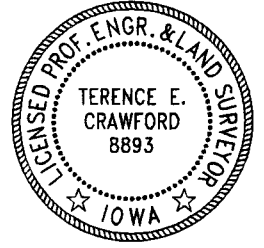


DISTANCES PLUMB CHAINED

E1/4 CORNER SECTION 14-83-40

HEREBY CERTIFY THAT THIS LAND SURVEYING DOCUMENT WAS PREPARED  
 AND THE RELATED SURVEY WORK WAS PERFORMED BY ME OR UNDER  
 MY DIRECT SUPERVISION AND THAT I AM A DULY LICENSED LAND  
 SURVEYOR UNDER THE LAWS OF THE STATE OF IOWA.

*Terence E. Crawford*  
 TERENCE E. CRAWFORD  
 IA LICENSE NO. 8893  
 DATE APR 26 2002  
 EXP. DATE DECEMBER 31, 2003



SE PROJECT NO. 24502  
 DRAWN BY: LLL