

FILED  
 REC'D  
 JAN 23 2008  
 CRAWFORD COUNTY  
 IOWA

This document prepared by : Semke & Associates - 712-792-2276  
 Michael G. Semke, L.S. #10318 - 716 N. Crawford St. - Carroll, Iowa

UNITED STATES PUBLIC LAND SURVEY CORNER CERTIFICATE of  
 Land Survey Monuments situated in Section 29, Township 85 North, Range 39  
 West, of the Fifth Principal Meridian, Crawford County, Iowa.  
 Previously recorded in Book , Page in County Recorder's Office.

(Show reason for preparing this certificate, the evidence and detailed procedures used in establishing the corner positions and monumentation found or placed.)

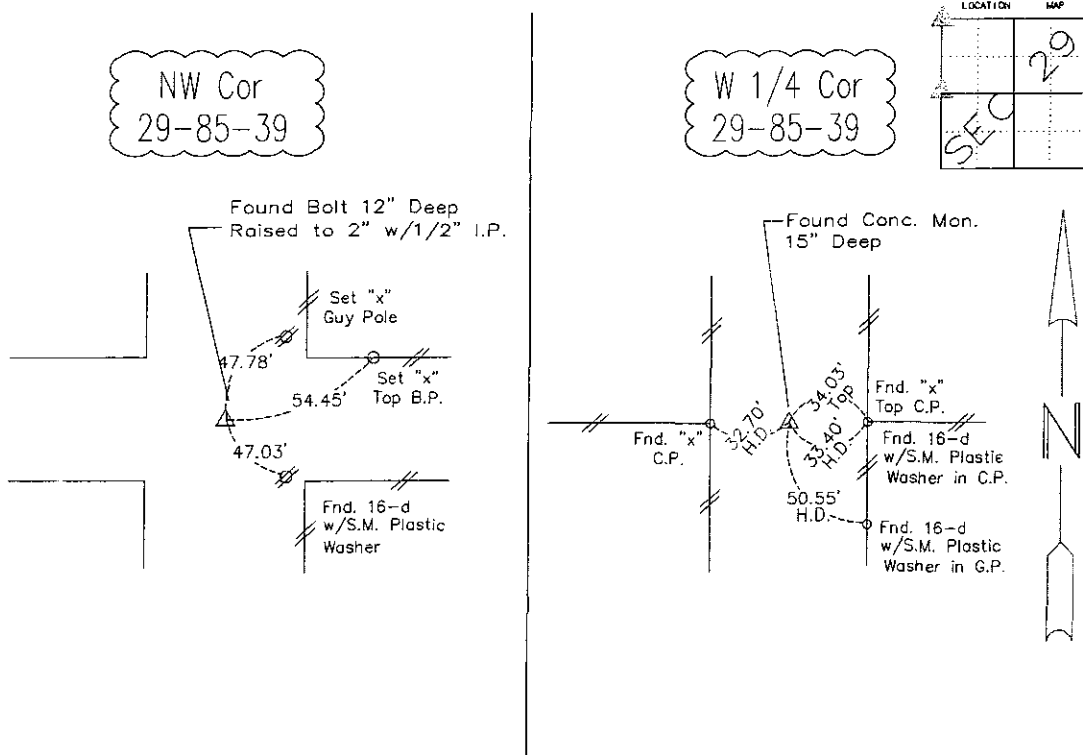
W 1/4 Corner Found Conc Mon. 15" Deep

NW Corner Found Bolt 12" Deep  
 Raised to 2" w/1/2" I.P.

Note: All pins set are 1/2" x 24" Rerod w/Yellow Cap #10318 unless noted otherwise.

PLAN - VIEW

(Show a minimum of three reference ties to durable physical objects, relevant monuments and physical conditions that will enable recovery of the corner.)



Note: all ties slope chained unless noted otherwise.

LICENSED LAND SURVEYOR  
 MICHEAL G. SEMKE  
 10318  
 IOWA

I HEREBY CERTIFY THAT THIS LAND SURVEYING DOCUMENT WAS PREPARED AND RELATED SURVEY WORK WAS PERFORMED BY ME OR UNDER MY DIRECT PERSONAL SUPERVISION AND THAT I AM A DULY LICENSED LAND SURVEYOR UNDER THE LAWS OF THE STATE OF IOWA.

*M. G. Semke* 1/31/8

Signature \_\_\_\_\_ Date \_\_\_\_\_  
 Micheal G. Semke, L.S. No. 10318

Printed of Typed Name \_\_\_\_\_

Pages or sheets covered by this seal THIS PAGE My license renewal date is 12/31/09.

List Corners to be Indexed

Corners	Section	Twp	Range
W 1/4 Cor	29	85	39
E 1/4 Cor	30	85	39
N.W. Cor	29	85	39
N.E. Cor	30	85	39
S.E. Cor	19	85	39
S.W. Cor	20	85	39