

PREPARED BY: DGR ENGINEERING, 1302 S. UNION STREET, P.O. BOX 511, ROCK RAPIDS, IOWA 51246 (712) 472-2531

UNITED STATES PUBLIC LAND SURVEY CORNER CERTIFICATE
 OF

Land Survey Monuments situated in Section 21, Township 85 Range 39
 of the Fifth Principal Meridian, CRAWFORD County, Iowa.

Previously recorded in E.1/4 & SE=INST. NO. 2001-0354; S.1/4=INST. NO. 2003-1482 in County Recorder's Office.
(book, page, document number, etc.)

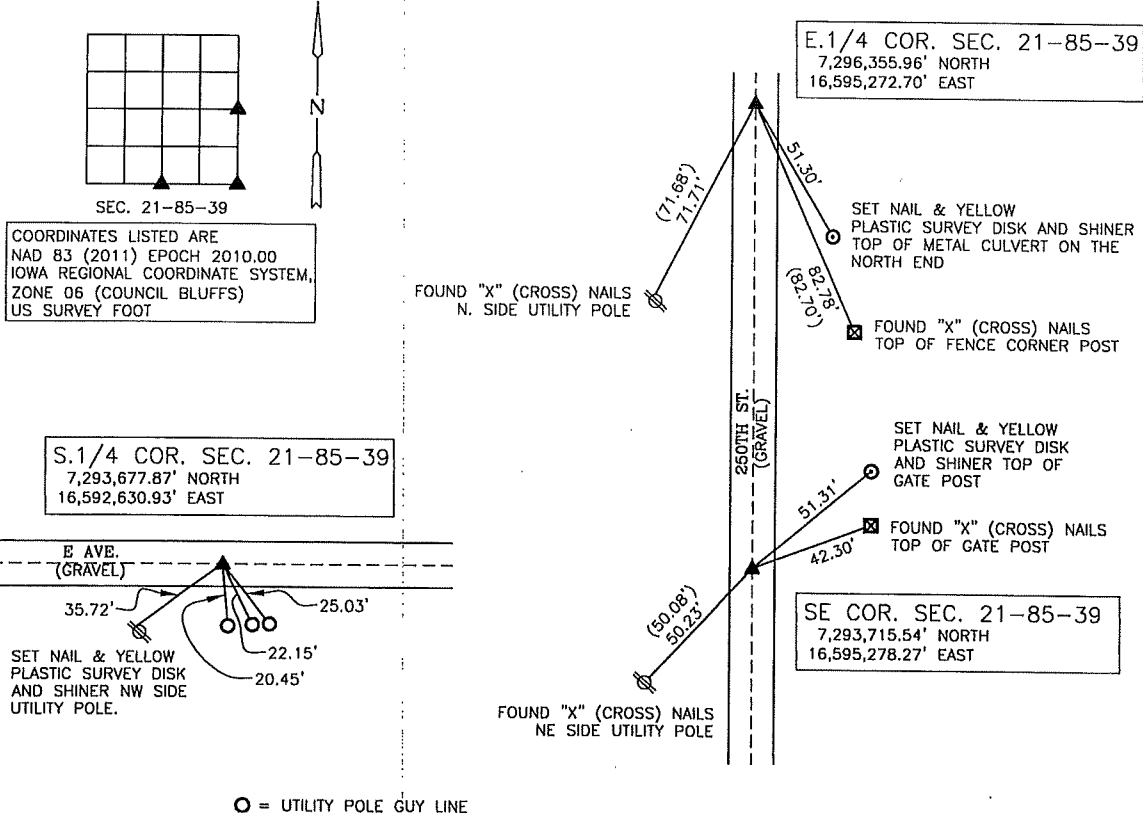
(Show reason for preparing this certificate, the evidence and detailed procedures used in establishing the corner positions and monumentation found or placed.)

Monument Description and Remarks: FOR SURVEY IN THE SE1/4 SECTION 21-85-39

- E.1/4 CORNER - FOUND 5/8" DIA. REBAR WITH YELLOW SURVEYOR'S I.D. CAP NO. 8893 NEAR ϕ GRAVEL ROAD (250TH ST.), 6" BELOW GRAVEL. MATCHES REMAINING TIES.
- SE CORNER - FOUND 5/8" DIA. REBAR WITH YELLOW SURVEYOR'S I.D. CAP NO. 8893 NEAR ϕ GRAVEL ROAD (250TH ST.), 3" BELOW GRAVEL. MATCHES REMAINING TIES.
- S.1/4 CORNER - FOUND 5/8" DIA. REBAR NEAR ϕ GRAVEL ROAD (250TH ST.), 2" BELOW GRAVEL. NO TIES REMAINING.

PLAN - VIEW

(Show a minimum of three reference ties to durable physical objects, relevant monuments and physical conditions that will enable recovery of the corner.)



ALL MEASURED DISTANCES SHOWN ARE HORIZONTAL, ALL RECORD DISTANCES (##') SHOWN ARE SLOPED CHAINED

I hereby certify that this land surveying document was prepared and the related survey work was performed by me or under my direct personal supervision and that I am a duly Licensed Land Surveyor under the laws of the State of Iowa.

By: *Adam Wiersma* 1-25-19
 Adam N. Wiersma, L.S. License No. 21094 (Date)
 My license renewal date is December 31, 2019

Sheets covered by this seal: THIS SHEET ONLY

List Corners to be Indexed			
CORNER	SECTION	TWP	RANGE
E.1/4 COR.	21	85	39
SE COR.	21	85	39
S.1/4 COR.	21	85	39