

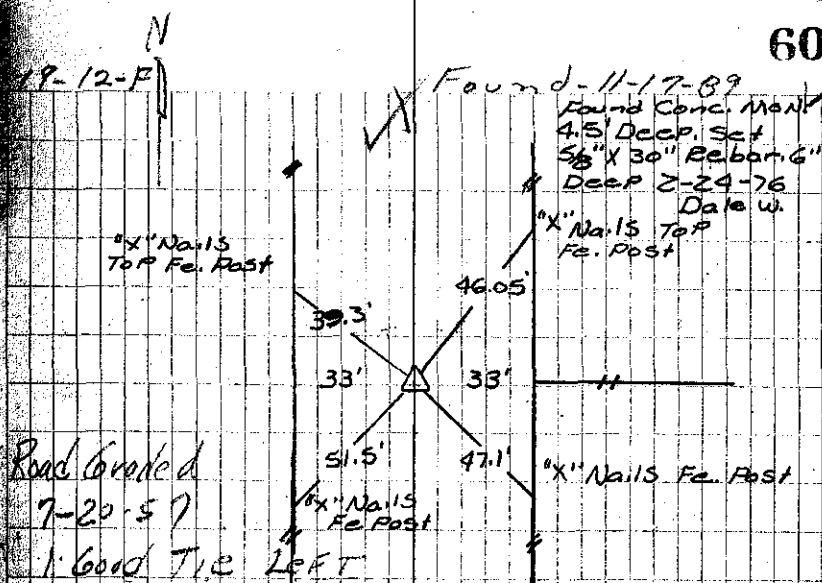
E Oct 27

27-26 11-17-39 found track 6" x 7" x 8"
 1 piece of brick, 1-20" spike
 16" deep. Lowered and set C.M.
 ties from x-spts in cor posts
 27.8 W. from tel. pole
 27.5 W.N.W. " " box Elder stump
 36.1 S.W. " " 2nd post M
 29.1 E. " " N.+S. fence line
 42.8 W From Power Pole

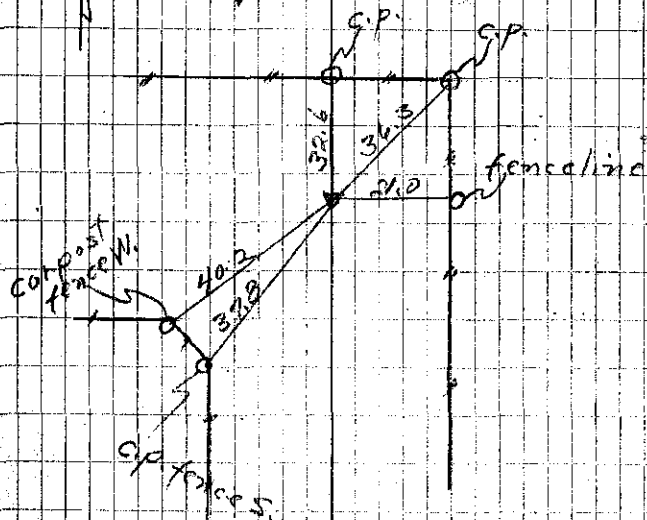
N Oct 27

22
 27 11-17-39 found track 4" x 10" x 11"
 16" deep. Lowered and set
 C.M.
 ties from x-spts in cor posts
 37.8 N.E. from cor post fence S.
 40.2 N.E. " " " " " " W.
 32.6 S. " " " " "
 36.3 S.W. " " " " "
 21.0 W. " " fence line, from S
 Cor 1st East of N + S fence

19-12-F



79-14-F.N.



E.V.