

INDEXED
 FILED
 RECORDED
 1/11/07

PREPARED BY AND RETURN TO: JEFFREY M. KRUEGER P.L.S., KUEHL AND PAYER LTD., 2002 WEST MAIN ST., SAC CITY, IA 50583 PH. (712)662-7859

**UNITED STATES PUBLIC LAND SURVEY CORNER CERTIFICATE
 OF**

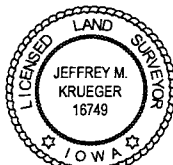
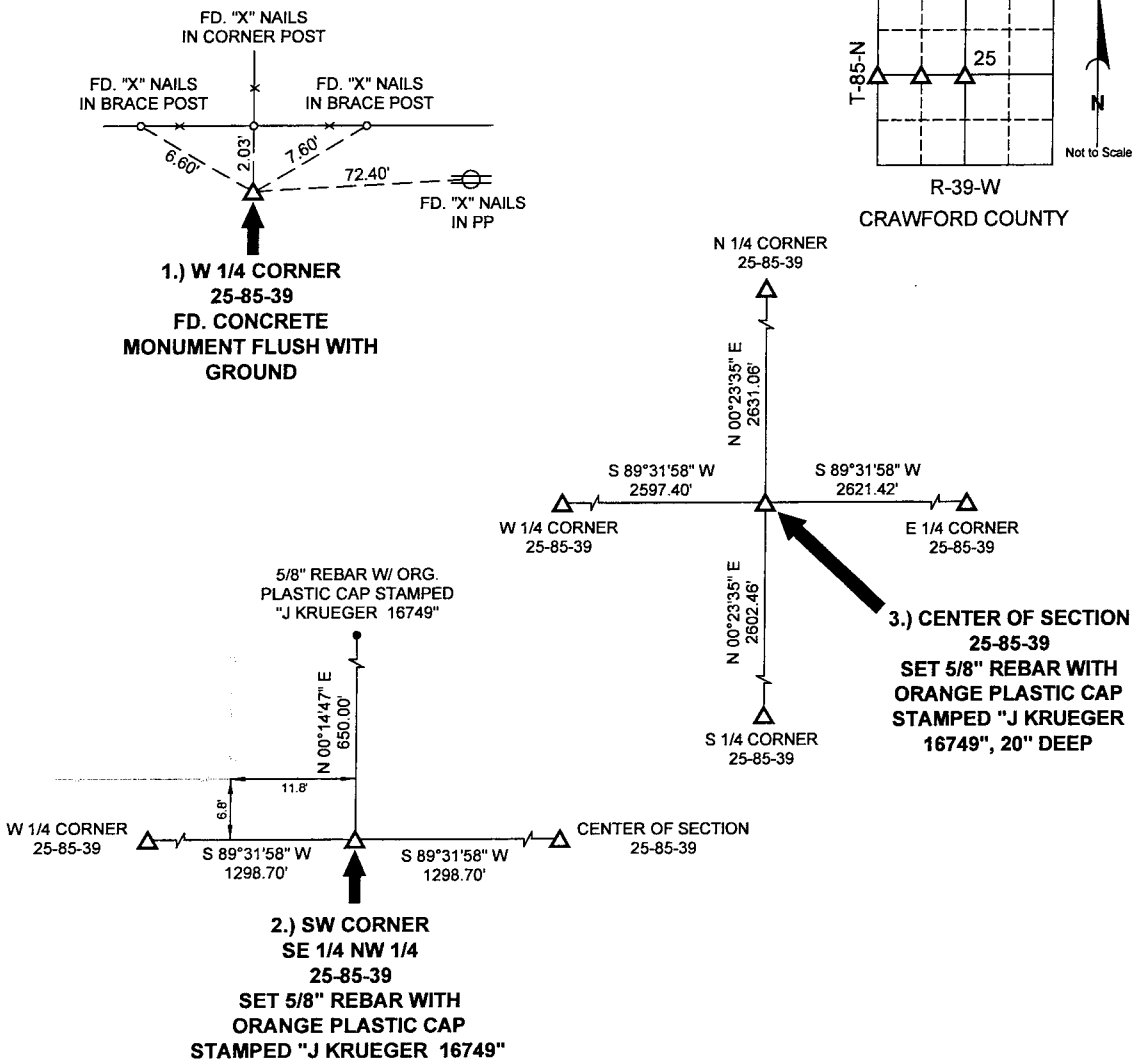
LAND SURVEY MONUMENTS SITUATED IN SECTION 25, TOWNSHIP 85 NORTH,
 RANGE 39 WEST, OF THE 5TH PRINCIPAL MERIDIAN, CRAWFORD COUNTY, IOWA.

PREVIOUSLY RECORDED IN BOOK _____ PAGE _____

MONUMENT DESCRIPTION AND REMARKS:

- 1.) W 1/4 CORNER 25-85-39: FD. CONCRETE MONUMENT FLUSH WITH GROUND
- 2.) SW CORNER SE 1/4 NW 1/4 25-85-39: SET 5/8" REBAR WITH ORANGE PLASTIC CAP STAMPED "J KRUEGER 16749", EQUIDISTANT & ON LINE BETWEEN THE W 1/4 CORNER & CENTER OF SECTION
- 3.) CENTER OF SECTION 25-85-39: SET 5/8" REBAR WITH ORANGE PLASTIC CAP STAMPED "J KRUEGER 16749", 20" DEEP, AT THEORETICAL POSITION PER B.L.M. METHODS

PLAN - VIEW



I hereby certify that this land surveying document was prepared and the related survey work was performed by me or under my direct personal supervision and that I am a duly licensed Land Surveyor under the laws of the State of Iowa.

Jeffrey M. Krueger
 Jeffrey M. Krueger
 License Number 16749
 My license renewal date is December 31, 2008
 Pages covered by this fee: 1

6-29-2007
 Date:

List Corners to be Indexed

Corners	Section	Township	Range
1) W 1/4	25	85	39
2) SW CORNER SE 1/4 NW 1/4	25	85	39
3) CENTER	25	85	39

PN: 070546
 DRAWN: JMK