



REC015391  
 Crawford County Recorder  
 Denise Meeves  
**Fee Book 2007-2113**

08/02/2007 @10:21AM  
 PLC PLAT CORNER CER  
 Book: Page: # Pages: 1  
 Total Fees: \$7.00

CHECKED  
 LCM UP  
 COPIED  
 AWAY

PREPARED BY AND RETURN TO: JEFFREY M. KRUEGER P.L.S., KUEHL AND PAYER LTD., 2002 WEST MAIN ST., SAC CITY, IA 50583 PH. (712)662-7859

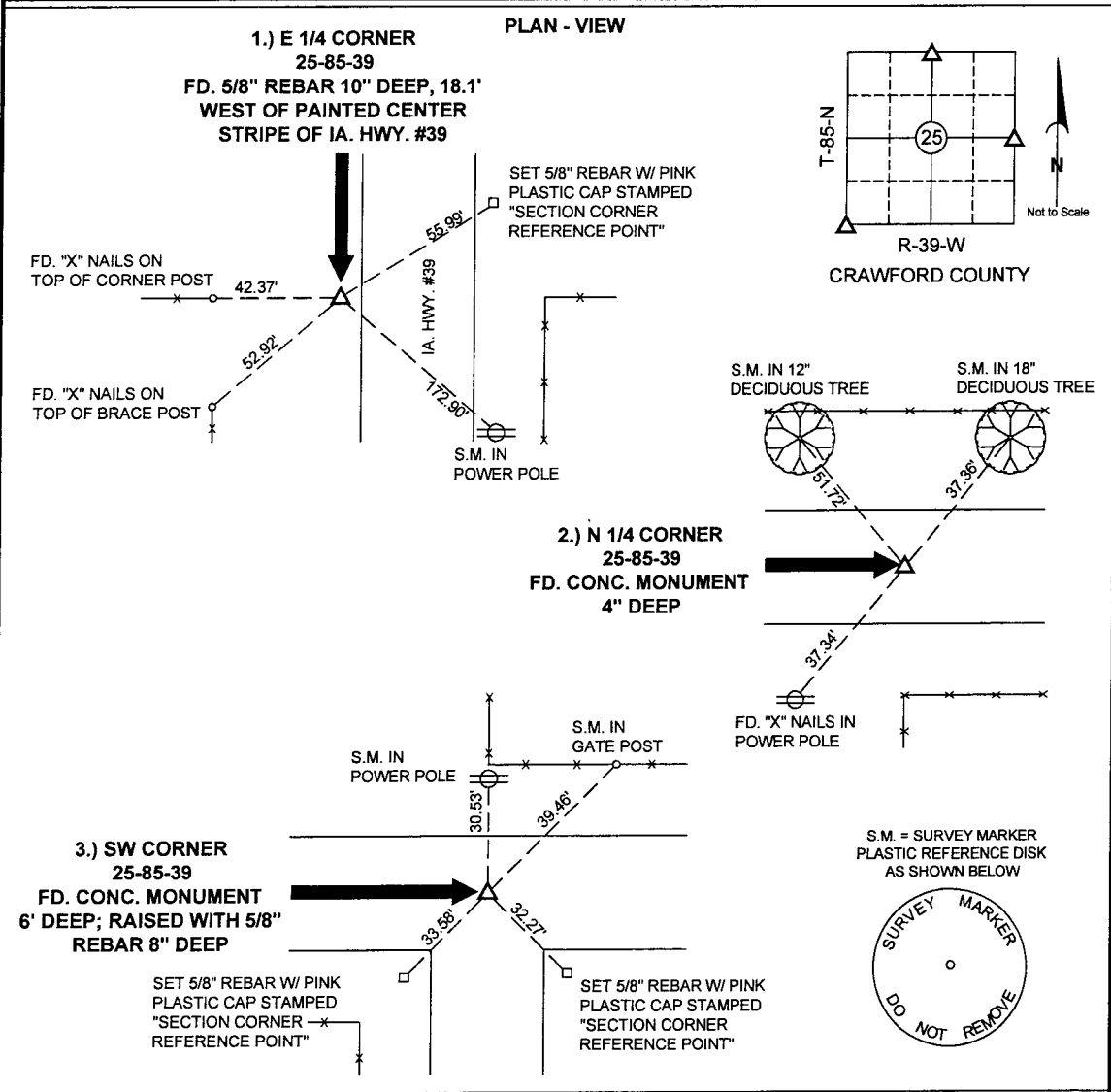
**UNITED STATES PUBLIC LAND SURVEY CORNER CERTIFICATE  
 OF**

LAND SURVEY MONUMENTS SITUATED IN SECTION 25, TOWNSHIP 85 NORTH,  
 RANGE 39 WEST, OF THE 5TH PRINCIPAL MERIDIAN, CRAWFORD COUNTY, IOWA.

PREVIOUSLY RECORDED IN BOOK \_\_\_\_\_ PAGE \_\_\_\_\_

**MONUMENT DESCRIPTION AND REMARKS:**

- 1.) E 1/4 CORNER 25-85-39: FD. 5/8" REBAR, 10" DEEP, 18.1' WEST OF PAINTED CENTER STRIPE OF IA. HWY. #39
- 2.) N 1/4 CORNER 25-85-39: FD. CONC. MONUMENT 4" DEEP
- 3.) SW CORNER 25-85-39: FD. CONC. MONUMENT 6' DEEP; RAISED WITH 5/8" REBAR 8" DEEP



I hereby certify that this land surveying document was prepared and the related survey work was performed by me or under my direct personal supervision and that I am a duly licensed Land Surveyor under the laws of the State of Iowa.

Jeffrey M. Krueger  
 License Number: 16749  
 My license renewal date is December 31, 2008  
 Pages covered by this plat 1

Date: 6-29-2007



**List Corners to be Indexed**

Corners	Section	Township	Range
1) E 1/4	25	85	39
2) N 1/4	25	85	39
3) SW	25	85	39

PN: 070546  
 DRAWN: JMM