

INDEX SM/DM
 SCAN DM
 FOLLOW UP DM
 PROOF SM

Instrument #: 2022-0692
 03/15/2022 09:25:51 AM Total Pages: 1
 PLC PLAT COR CERT
 Recording Fee: \$0.00 Transfer Tax: \$0
 Denise Meeves, Recorder, Crawford County Iowa



PREPARED BY: PAUL ASSMAN-CRAWFORD COUNTY ENGINEER'S OFFICE-COURTHOUSE-DENISON, IA.-712-263-2449

UNITED STATES PUBLIC LAND SURVEY CORNER CERTIFICATE OF

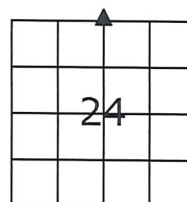
LAND SURVEY MONUMENT SITUATED IN OTTER CREEK TOWNSHIP, NORTH 1/4 CORNER OF SECTION 24, T-85N,
R-39W OF THE FIFTH P.M. CRAWFORD COUNTY, IOWA.

PREVIOUSLY RECORDED AS NO. 2016-1338

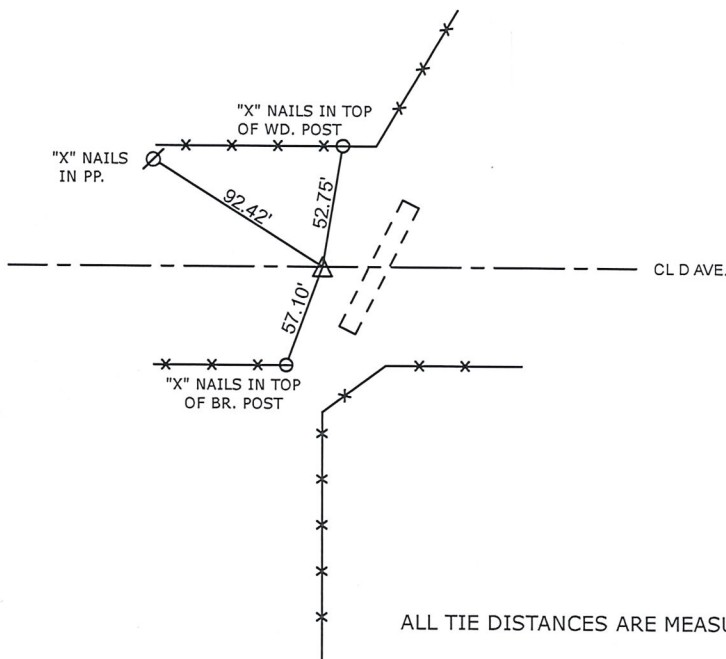
MONUMENT DESCRIPTION AND REMARKS

NORTH 1/4 CORNER SEC. 24-85-39

FOUND CARRIAGE BOLT
 COUNTY RESURFACED ROAD AND SET 1/2" X 4" CARRIAGE
 BOLT 1/4" BELOW SURFACE AND RETIED



NORTH 1/4 CORNER SEC. 24-85-39



ALL TIE DISTANCES ARE MEASURED HORIZONTALLY USING GPS

CERTIFICATION:

I HEREBY CERTIFY THAT THIS LAND SURVEYING DOCUMENT WAS PREPARED AND THE RELATED SURVEY WORK WAS PERFORMED BY ME OR UNDER MY DIRECT PERSONAL SUPERVISION AND THAT I AM A DULY LICENSED LAND SURVEYOR UNDER THE LAWS OF THE STATE OF IOWA.



Signature

3/8/22
Date of Survey

PAUL J. ASSMAN

11982

12-31-22

Typed Name

L.S. No.

License Renewal Date

Pages covered by this seal 1

