

INDEXED _____
 FOLLOW UP _____
 PROOFED _____
 SCANNED _____

Instrument #: 2021-0984
 05/03/2021 02:05:02 PM Total Pages: 1
 PLC PLAT COR CERT
 Recording Fee: \$7.00 Transfer Tax: \$0
 Denise Meeves, Recorder, Crawford County Iowa



WILKE LAND SURVEYING INC. 401 1800th Street Panama, Iowa 51562 (712)489-2898

UNITED STATES PUBLIC LAND SURVEY CORNER CERTIFICATE

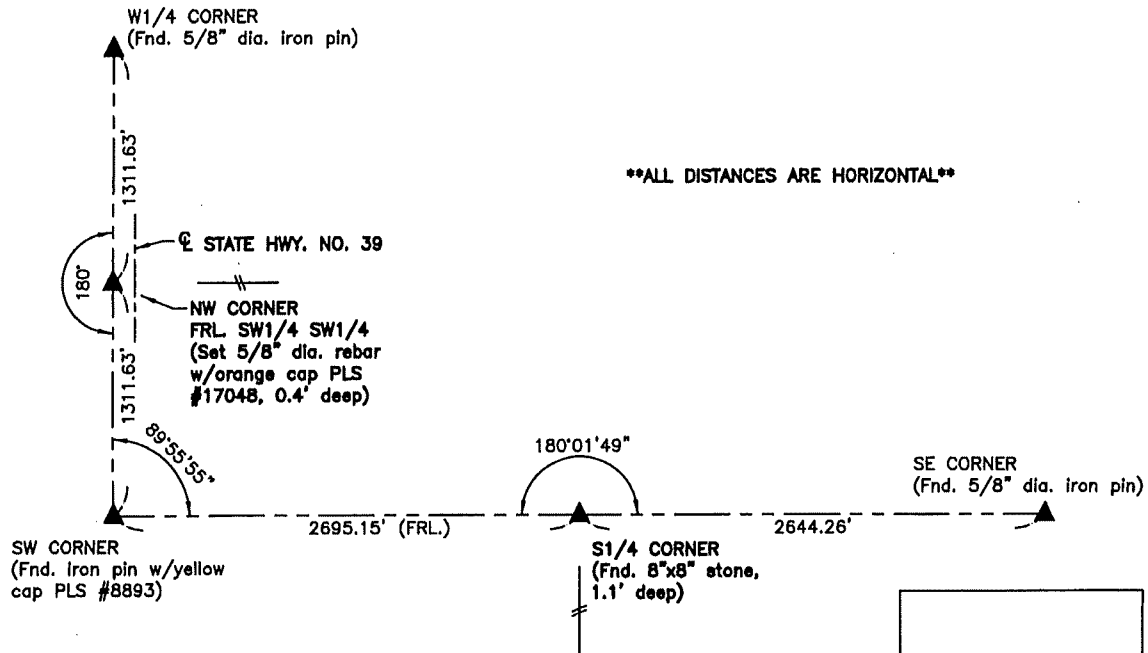
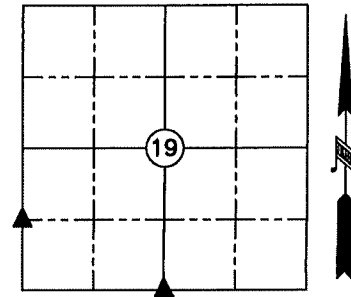
SECTION 19 TOWNSHIP 85N RANGE 38W COUNTY Crawford

Reason for Certificate: Survey in the Frl. SW1/4 SW1/4

Monument Description and Remarks:

NW CORNER FRL. SW1/4 SW1/4 - Set a 5/8" diameter by 24" long rebar with an orange cap PLS #17048 (0.4' deep) at the midpoint of the West line of the Fractional SW1/4. The monument is ±17.2' West of the West edge of State Highway No. 39 pavement.

S1/4 CORNER - Found a 8"x8" stone (1.1' deep) with a 5/8" diameter rebar along the Northeast side of said stone. Also found a portion of the broke WPA concrete monument laying on the South side of the road.



List Corners to be Indexed			
Corner	Section	Twp.	Range
NW CORNER FRL. SW1/4 SW1/4	19	85N	38W
S1/4 CORNER	19	85N	38W

I hereby certify that this land surveying document was prepared and the related survey work was performed by me or under my direct personal supervision and that I am a duly licensed Land Surveyor under the laws of the State of Iowa.

Dean A. Wilke 4/27/21
 Dean A. Wilke Date

License number 17048

My license renewal date is December 31, 2021

Pages or sheets covered by this seal: This page only