

INDEX Sm/Dm  
 SCAN Dm  
 FOLLOW UP DM  
 PROOF Sm

**Instrument #: 2022-0686**  
 03/15/2022 09:25:51 AM Total Pages: 1  
 PLC PLAT COR CERT  
 Recording Fee: \$0.00 Transfer Tax: \$0  
 Denise Meeves, Recorder, Crawford County Iowa



PREPARED BY: PAUL ASSMAN-CRAWFORD COUNTY ENGINEER'S OFFICE-COURTHOUSE-DENISON, IA.-712-263-2449

## UNITED STATES PUBLIC LAND SURVEY CORNER CERTIFICATE OF

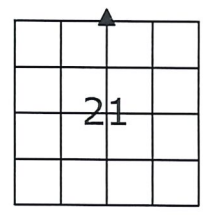
LAND SURVEY MONUMENT SITUATED IN OTTER CREEK TOWNSHIP, NORTH 1/4 CORNER OF SECTION 21, T-85N,  
R-39W OF THE FIFTH P.M. CRAWFORD COUNTY, IOWA.

PREVIOUSLY RECORDED AS NO. 2003-4626

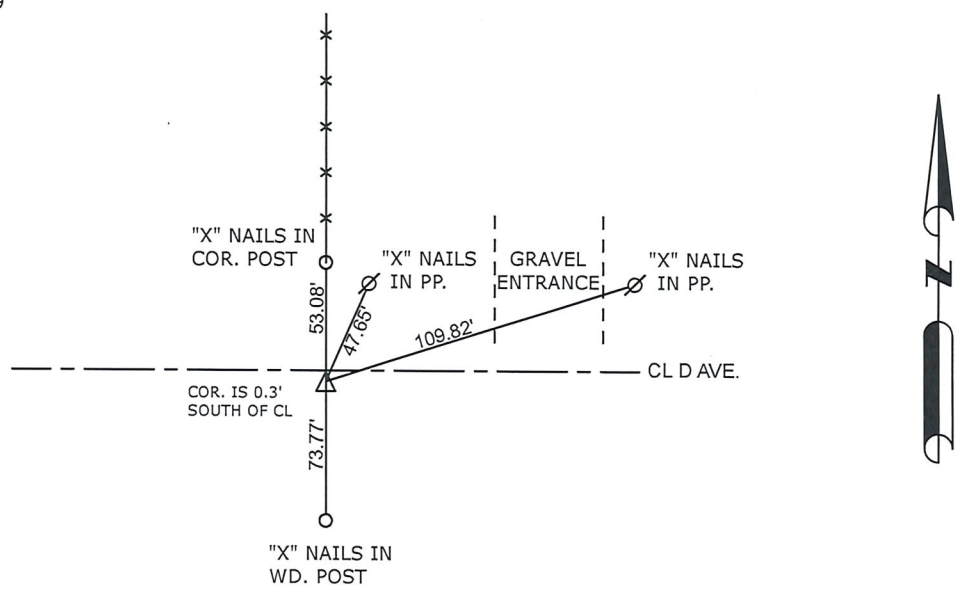
### MONUMENT DESCRIPTION AND REMARKS

NORTH 1/4 CORNER SEC. 21-85-39

FOUND CARRIAGE BOLT  
 COUNTY RESURFACED ROAD AND SET 1/2" X 4" CARRIAGE  
 BOLT 1/4" BELOW SURFACE AND RETIED



NORTH 1/4 CORNER SEC. 21-85-39



ALL TIE DISTANCES ARE MEASURED HORIZONTALLY USING GPS

**CERTIFICATION:**

I HEREBY CERTIFY THAT THIS LAND SURVEYING DOCUMENT WAS PREPARED AND THE RELATED SURVEY WORK WAS PERFORMED BY ME OR UNDER MY DIRECT PERSONAL SUPERVISION AND THAT I AM A DULY LICENSED LAND SURVEYOR UNDER THE LAWS OF THE STATE OF IOWA.

Paul J. Assman  
 Signature

3/18/22  
 Date of Survey

PAUL J. ASSMAN                      11982                      12-31-22  
 Typed Name                      L.S. No.                      License Renewal Date

Pages covered by this seal 1

